

## Product datasheet

# Anti-gamma Tubulin antibody ab11321

★★★★★ [4 Abreviews](#) [23 References](#) [5 Images](#)

### Overview

---

<b>Product name</b>	Anti-gamma Tubulin antibody
<b>Description</b>	Rabbit polyclonal to gamma Tubulin
<b>Host species</b>	Rabbit
<b>Tested applications</b>	<b>Suitable for:</b> ICC, WB
<b>Species reactivity</b>	<b>Reacts with:</b> Mouse, Rat, Dog, Human, Chinese hamster
<b>Immunogen</b>	Synthetic peptide: AATRPDYISWGTQEQ-CG , with N-terminally added cysteine-glycine, conjugated to KLH, corresponding to amino acids 437-451 of Xenopus laevis gamma Tubulin.

 [Run BLAST with](#)

 [Run BLAST with](#)

### General notes

Storage in frost-free freezers is not recommended. If slight turbidity occurs upon prolonged storage, clarify the solution by centrifugation before use. Working dilution samples should be discarded if not used within 12 hours.

The Life Science industry has been in the grips of a reproducibility crisis for a number of years. Abcam is leading the way in addressing this with our range of recombinant monoclonal antibodies and knockout edited cell lines for gold-standard validation. Please check that this product meets your needs before purchasing.

If you have any questions, special requirements or concerns, please send us an inquiry and/or contact our Support team ahead of purchase. Recommended alternatives for this product can be found below, along with publications, customer reviews and Q&As

### Properties

---

<b>Form</b>	Liquid
<b>Storage instructions</b>	Shipped at 4°C. Upon delivery aliquot and store at -20°C or -80°C. Avoid repeated freeze / thaw cycles.
<b>Storage buffer</b>	pH: 7.40 Preservative: 0.097% Sodium azide Constituent: 0.0268% PBS
<b>Purity</b>	IgG fraction
<b>Clonality</b>	Polyclonal

Isotype

IgG

## Applications

### The Abpromise guarantee

Our **Abpromise guarantee** covers the use of ab11321 in the following tested applications.

The application notes include recommended starting dilutions; optimal dilutions/concentrations should be determined by the end user.

Application	Abreviews	Notes
ICC		1/1000.
WB	★★★★★ (1)	1/1000. Predicted molecular weight: 51 kDa.

## Target

### Function

Tubulin is the major constituent of microtubules. Gamma tubulin is found at microtubule organizing centers (MTOC) such as the spindle poles or the centrosome. Pericentriolar matrix component that regulates alpha/beta tubulin minus-end nucleation, centrosome duplication and spindle formation.

### Sequence similarities

Belongs to the tubulin family.

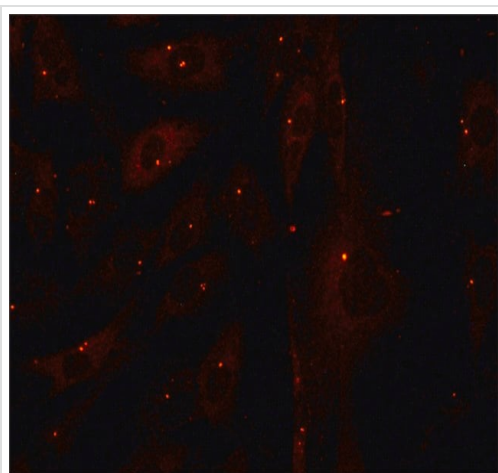
### Post-translational modifications

Phosphorylation at Ser-131 by BRSK1 regulates centrosome duplication, possibly by mediating relocation of gamma-tubulin and its associated proteins from the cytoplasm to the centrosome.

### Cellular localization

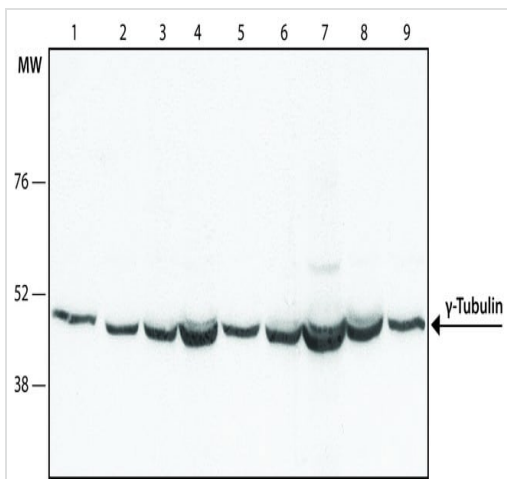
Cytoplasm > cytoskeleton > centrosome.

## Images



Immunocytochemistry analysis of Rat 1 cells labeling gamma Tubulin with ab11321 at 1/1000 dilution, followed by Goat Anti-Rabbit IgG, Cy3™ conjugate. Cells were fixed and permeabilized with methanol followed by acetone.

Immunocytochemistry - Anti-gamma Tubulin antibody (ab11321)



Western blot - Anti-gamma Tubulin antibody (ab11321)

**All lanes** : Anti-gamma Tubulin antibody (ab11321) at 1/1000 dilution

**Lane 1** : HeLa cell lysate

**Lane 2** : NIH-3T3 cell lysate

**Lane 3** : MDCK cell lysate

**Lane 4** : CHO cell lysate

**Lane 5** : Rat-2 cell lysate

**Lane 6** : A431 cell lysate

**Lane 7** : Jurkat cell lysate

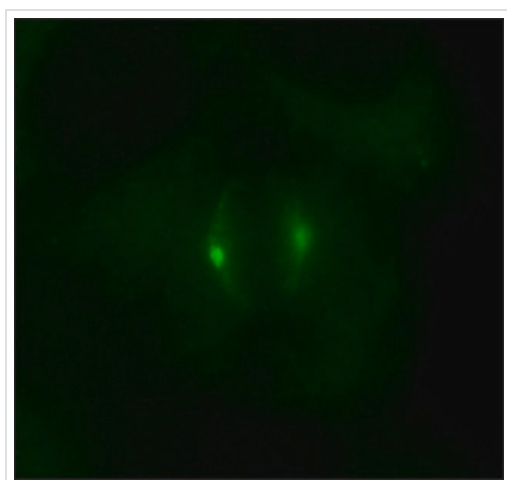
**Lane 8** : U87 cell lysate

**Lane 9** : C2C12 cell lysate

**Secondary**

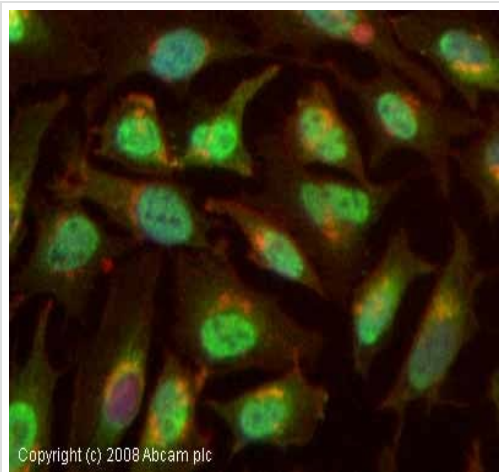
**All lanes** : Goat Anti-Rabbit IgG-peroxidase

**Predicted band size:** 51 kDa



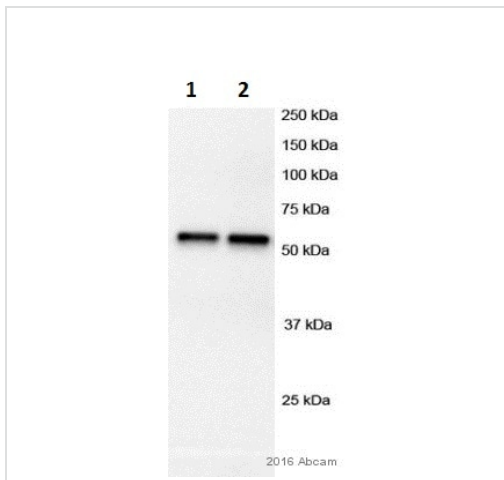
Immunocytochemistry - Anti-gamma Tubulin antibody (ab11321)

Immunocytochemistry analysis of HeLa cells labeling gamma Tubulin with ab11321 at 1/1000 dilution, followed by Goat Anti-Rabbit IgG, Atto-488 conjugate. Cells were fixed and permeabilized with methanol followed by acetone.



Immunocytochemistry - Anti-gamma Tubulin antibody (ab11321)

ICC/IF image of ab11321 stained HeLa cells. The cells were 4% PFA fixed (10 min) and then incubated in 1% BSA / 10% normal goat serum / 0.3M glycine in 0.1% PBS-Tween for 1h to permeabilise the cells and block non-specific protein-protein interactions. The cells were then incubated with the antibody (ab11321, 5 µg/ml) overnight at +4°C. The secondary antibody (green) was Alexa Fluor® 488 goat anti-rabbit IgG (H+L) used at a 1/1000 dilution for 1h. Alexa Fluor® 594 WGA was used to label plasma membranes (red) at a 1/200 dilution for 1h. DAPI was used to stain the cell nuclei (blue). This antibody also gave a positive IF result in Hek293, HepG2 and MCF7 cells.



Western blot - Anti-gamma Tubulin antibody (ab11321)

**All lanes :** Anti-gamma Tubulin antibody (ab11321) at 1/1000 dilution

**Lane 1 :** Mouse liver tissue lysate

**Lane 2 :** Mouse hepatocytes whole cell lysate

Lysates/proteins at 20 µg per lane.

**Secondary**

**All lanes :** Goat anti-rabbit (HRP) secondary antibody at 1/5000 dilution

Developed using the ECL technique.

Performed under reducing conditions.

**Predicted band size:** 51 kDa

**Observed band size:** 50 kDa

**Exposure time:** 5 seconds

Blocking buffer 5% milk.

**Please note:** All products are "FOR RESEARCH USE ONLY. NOT FOR USE IN DIAGNOSTIC PROCEDURES"

### **Our Abpromise to you: Quality guaranteed and expert technical support**

---

- Replacement or refund for products not performing as stated on the datasheet
- Valid for 12 months from date of delivery
- Response to your inquiry within 24 hours
- We provide support in Chinese, English, French, German, Japanese and Spanish
- Extensive multi-media technical resources to help you
- We investigate all quality concerns to ensure our products perform to the highest standards

If the product does not perform as described on this datasheet, we will offer a refund or replacement. For full details of the Abpromise, please visit <https://www.abcam.com/abpromise> or contact our technical team.

### **Terms and conditions**

---

- Guarantee only valid for products bought direct from Abcam or one of our authorized distributors