

Anti-gamma Tubulin antibody [GTU-88] - Centrosome Marker ab11316

★★★★★ [17 Abreviews](#) [166 References](#) [4 Images](#)

Overview

Product name	Anti-gamma Tubulin antibody [GTU-88] - Centrosome Marker
Description	Mouse monoclonal [GTU-88] to gamma Tubulin - Centrosome Marker
Host species	Mouse
Tested applications	Suitable for: ICC/IF, WB
Species reactivity	Reacts with: Mouse, Chicken, Cow, Dog, Human, African green monkey, Chinese hamster
Immunogen	Synthetic peptide conjugated to KLH, corresponding to N-terminal amino acids 38-53 of gamma Tubulin.
General notes	<p><i>This product was changed from ascites to tissue culture supernatant on 18th October 2016. The following lots are from ascites and are still in stock as of 18th October 2016 (GR286332 and GR225007). Lot numbers higher than GR286332 will be from tissue culture supernatant. Please note that dilutions may need to be adjusted accordingly.</i></p> <p>Storage in frost-free freezers is not recommended. If slight turbidity occurs upon prolonged storage, clarify the solution by centrifugation before use.</p> <p>The Life Science industry has been in the grips of a reproducibility crisis for a number of years. Abcam is leading the way in addressing this with our range of recombinant monoclonal antibodies and knockout edited cell lines for gold-standard validation. Please check that this product meets your needs before purchasing.</p> <p>If you have any questions, special requirements or concerns, please send us an inquiry and/or contact our Support team ahead of purchase. Recommended alternatives for this product can be found below, along with publications, customer reviews and Q&As</p>

Properties

Form	Liquid
Storage instructions	Shipped at 4°C. Upon delivery aliquot and store at -20°C or -80°C. Avoid repeated freeze / thaw cycles.
Storage buffer	<p>pH: 7.40</p> <p>Preservative: 0.097% Sodium azide</p> <p>Constituent: PBS</p>

Purity	Proprietary Purification
Purification notes	Purified from Tissue Culture Supernatant.
Clonality	Monoclonal
Clone number	GTU-88
Isotype	IgG1

Applications

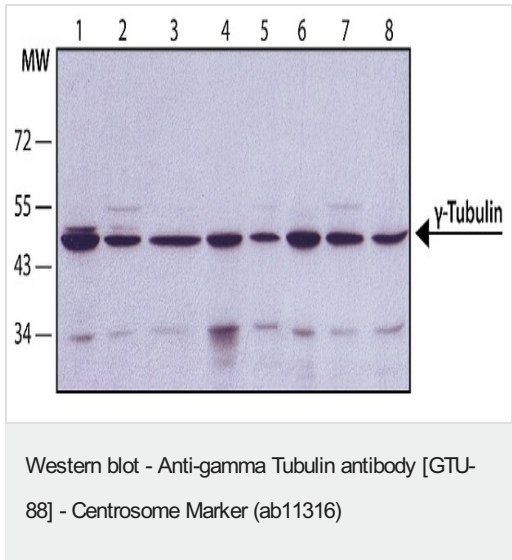
The Abpromise guarantee Our **Abpromise guarantee** covers the use of ab11316 in the following tested applications. The application notes include recommended starting dilutions; optimal dilutions/concentrations should be determined by the end user.

Application	Abreviews	Notes
ICC/IF	★★★★★ (10)	Use a concentration of 1 - 2 µg/ml.
WB	★★★★★ (6)	1/10000. Detects a band of approximately 48 kDa (predicted molecular weight: 48 kDa).

Target

Function	Tubulin is the major constituent of microtubules. Gamma tubulin is found at microtubule organizing centers (MTOC) such as the spindle poles or the centrosome. Pericentriolar matrix component that regulates alpha/beta tubulin minus-end nucleation, centrosome duplication and spindle formation.
Sequence similarities	Belongs to the tubulin family.
Post-translational modifications	Phosphorylation at Ser-131 by BRSK1 regulates centrosome duplication, possibly by mediating relocation of gamma-tubulin and its associated proteins from the cytoplasm to the centrosome.
Cellular localization	Cytoplasm > cytoskeleton > centrosome.

Images



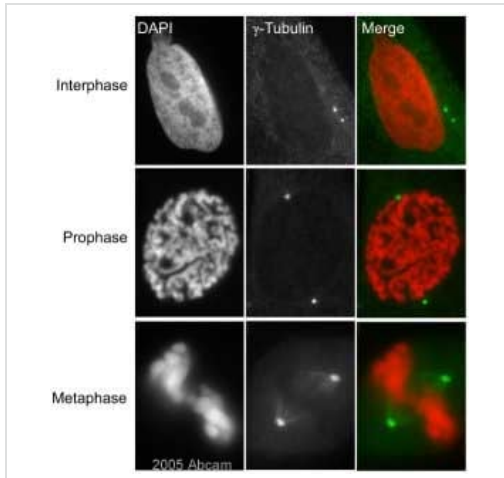
All lanes : Anti-gamma Tubulin antibody [GTU-88] - Centrosome Marker (ab11316) at 1/10000 dilution

- Lane 1** : HeLa cell line lysates
- Lane 2** : U87 cell line lysates
- Lane 3** : COS7 cell line lysates
- Lane 4** : P19 cell line lysates
- Lane 5** : Hepa1-6 cell line lysates
- Lane 6** : CHO cell line lysates
- Lane 7** : MDBK cell line lysates
- Lane 8** : MDCK cell line lysates

Secondary

All lanes : Goat Anti-Mouse IgG-Peroxidase

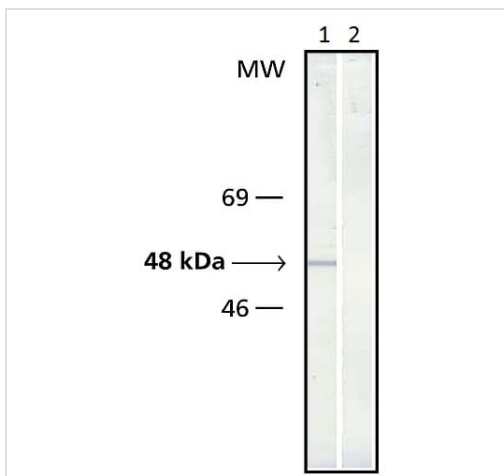
Predicted band size: 48 kDa



Immunocytochemistry/ Immunofluorescence - Anti-gamma Tubulin antibody [GTU-88] - Centrosome Marker (ab11316)

ab11316 at a 1/200 dilution staining HeLa cells by Immunocytochemistry. The antibody was incubated with the cells for 30 minutes and then detected using a Cy3 conjugated Goat anti-Mouse (H+L) (green stain). The antibody recognizes gamma-tubulin located at the centrosomes in metaphase and also faintly recognizes the centrosome association during interphase.

This image is courtesy of an Abreview submitted by **Kirk McManus** on **2 December 2005**.



Western blot - Anti-gamma Tubulin antibody [GTU-88] - Centrosome Marker (ab11316)

Lane 1 : Anti-gamma Tubulin antibody [GTU-88] - Centrosome Marker (ab11316) at 1/20000 dilution

Lane 2 : Negative control (secondary antibody only)

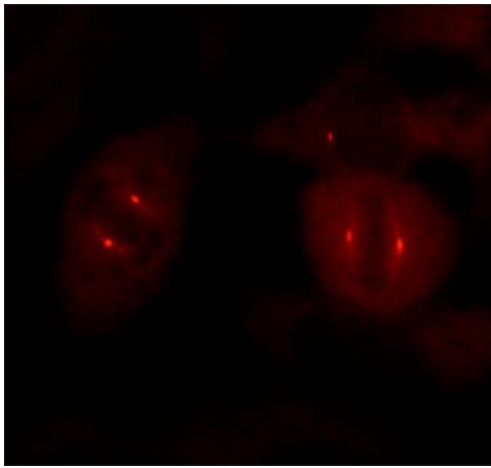
All lanes : Whole cell extract of chicken fibroblasts

Secondary

All lanes : Alkaline Phosphatase conjugated goat anti-mouse IgG

Predicted band size: 48 kDa

Observed band size: 48 kDa



Immunocytochemistry/ Immunofluorescence - Anti-gamma Tubulin antibody [GTU-88] - Centrosome Marker (ab11316)

Immunocytochemistry/Immunofluorescence analysis of HeLa cells labelling gamma Tubulin using ab11316 at a dilution of 1/5000. Cells were permeabilized with methanol and followed by fixation with acetone. A Cy3-conjugated goat anti-mouse IgG was used as the secondary antibody.

Please note: All products are "FOR RESEARCH USE ONLY. NOT FOR USE IN DIAGNOSTIC PROCEDURES"

Our Abpromise to you: Quality guaranteed and expert technical support

- Replacement or refund for products not performing as stated on the datasheet
- Valid for 12 months from date of delivery
- Response to your inquiry within 24 hours
- We provide support in Chinese, English, French, German, Japanese and Spanish
- Extensive multi-media technical resources to help you
- We investigate all quality concerns to ensure our products perform to the highest standards

If the product does not perform as described on this datasheet, we will offer a refund or replacement. For full details of the Abpromise, please visit <https://www.abcam.com/abpromise> or contact our technical team.

Terms and conditions

- Guarantee only valid for products bought direct from Abcam or one of our authorized distributors