

Anti-GANAB antibody ab96757

7 Images

Overview

Product name	Anti-GANAB antibody
Description	Rabbit polyclonal to GANAB
Host species	Rabbit
Tested applications	Suitable for: WB, IHC-P, ICC/IF
Species reactivity	Reacts with: Mouse, Human
Immunogen	Recombinant fragment corresponding to Human GANAB aa 97-261.
Positive control	293T, A431, H1299, HeLaS3, HepG2, Molt-4, Raji and NIH-3T3 whole cell lysates; HeLa cells; SW480 xenograft; human breast carcinoma tissue.
General notes	<p>The Life Science industry has been in the grips of a reproducibility crisis for a number of years. Abcam is leading the way in addressing this with our range of recombinant monoclonal antibodies and knockout edited cell lines for gold-standard validation. Please check that this product meets your needs before purchasing.</p> <p>If you have any questions, special requirements or concerns, please send us an inquiry and/or contact our Support team ahead of purchase. Recommended alternatives for this product can be found below, along with publications, customer reviews and Q&As</p>

Properties

Form	Liquid
Storage instructions	Shipped at 4°C. Upon delivery aliquot. Store at -20°C or -80°C. Avoid freeze / thaw cycle.
Storage buffer	<p>pH: 7.00</p> <p>Preservative: 0.01% Thimerosal (merthiolate)</p> <p>Constituents: 1.21% Tris, 0.75% Glycine, 10% Glycerol (glycerin, glycerine)</p>
Purity	Immunogen affinity purified
Clonality	Polyclonal
Isotype	IgG

Applications

The Abpromise guarantee Our **Abpromise guarantee** covers the use of ab96757 in the following tested applications.

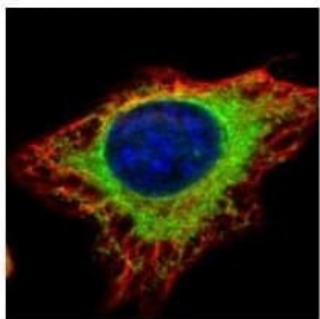
The application notes include recommended starting dilutions; optimal dilutions/concentrations should be determined by the end user.

Application	Abreviews	Notes
WB		1/500 - 1/3000. Predicted molecular weight: 107 kDa.
IHC-P		1/100 - 1/500.
ICC/IF		1/100 - 1/500.

Target

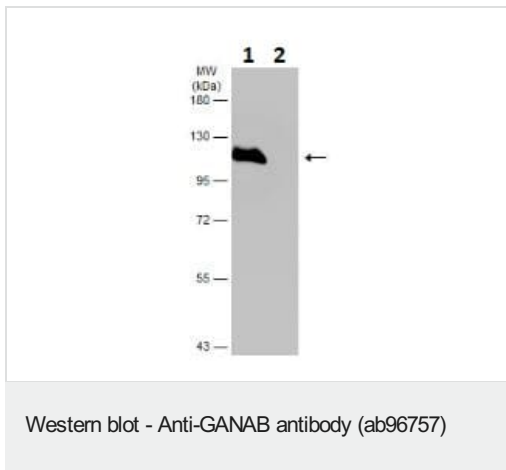
Function	Cleaves sequentially the 2 innermost alpha-1,3-linked glucose residues from the Glc(2)Man(9)GlcNAc(2) oligosaccharide precursor of immature glycoproteins.
Tissue specificity	Detected in placenta.
Pathway	Glycan metabolism; N-glycan metabolism.
Sequence similarities	Belongs to the glycosyl hydrolase 31 family.
Cellular localization	Endoplasmic reticulum. Golgi apparatus. Melanosome. Identified by mass spectrometry in melanosome fractions from stage I to stage IV.

Images



Mehanol-fixed HeLa (human epithelial cell line from cervix adenocarcinoma) cells staibed forGANAB using ab96757 at1/500 dilution (green) in ICC/IF. Alpha tubulin filaments are detected with an anti-Alpha tubulin antibody (red).

Immunocytochemistry/ Immunofluorescence - Anti-GANAB antibody (ab96757)



All lanes : Anti-GANAB antibody (ab96757) at 1/1000 dilution

Lane 1 : Wild-type HeLa (human epithelial cell line from cervix adenocarcinoma) cell extract

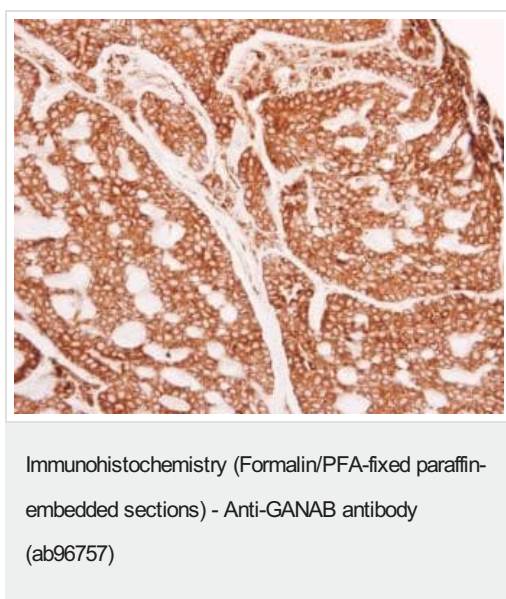
Lane 2 : GANAB knockout HeLa cell extract

Lysates/proteins at 30 µg per lane.

Secondary

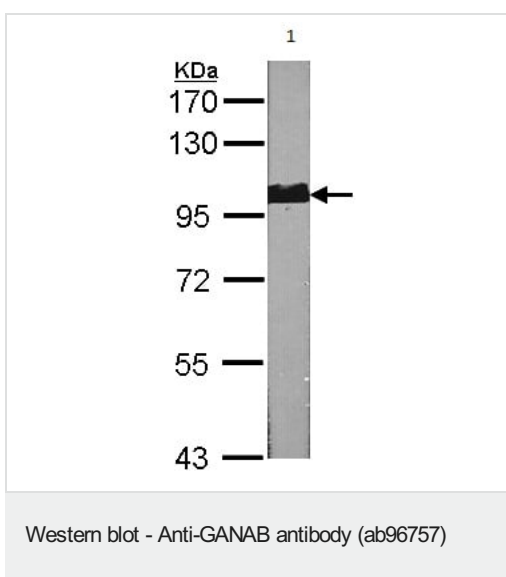
All lanes : Anti-Rabbit IgG HRP

Predicted band size: 107 kDa



Paraffin-embedded human breast carcinoma tissue stained for GANAB using ab96757 at 1/500 dilution in immunohistochemical analysis.

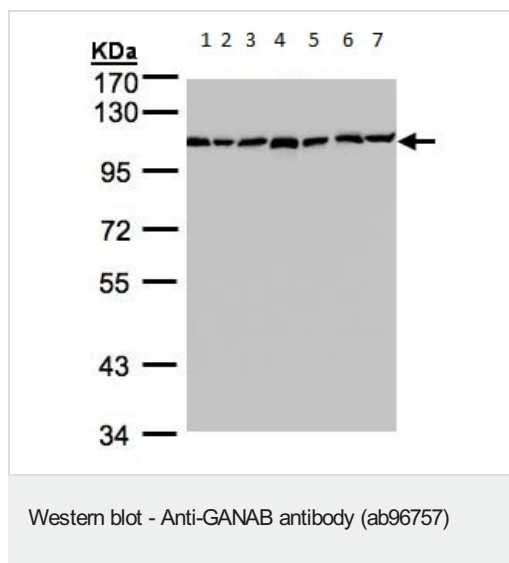
Antigen Retrieval: Citrate buffer, pH 6.0, 15 min.



Anti-GANAB antibody (ab96757) at 1/1000 dilution + NIH-3T3 whole cell lysate at 30 µg

Predicted band size: 107 kDa

7.5% SDS PAGE



All lanes : Anti-GANAB antibody (ab96757) at 1/1000 dilution

Lane 1 : 293T whole cell lysate

Lane 2 : A431 whole cell lysate

Lane 3 : H1299 whole cell lysate

Lane 4 : HeLa S3 whole cell lysate

Lane 5 : HepG2 whole cell lysate

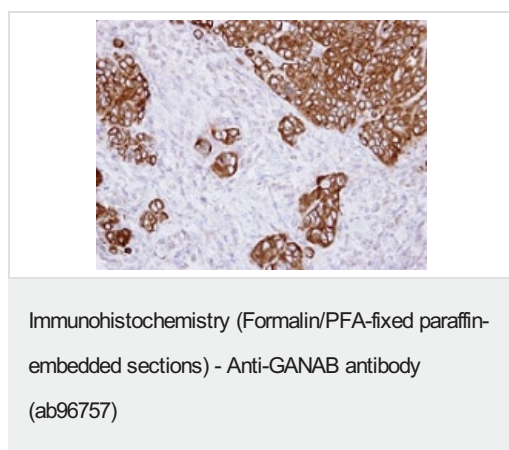
Lane 6 : Molt-4 whole cell lysate

Lane 7 : Raji whole cell lysate

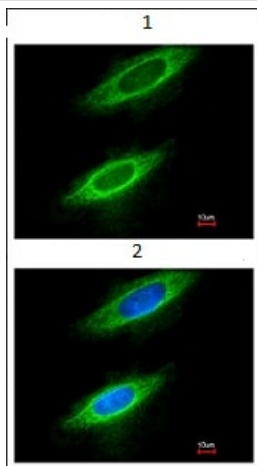
Lysates/proteins at 30 µg per lane.

Predicted band size: 107 kDa

7.5% SDS PAGE



Immunohistochemical analysis of GANAB in paraffin-embedded SW480 xenograft, using ab96757 at 1/500 dilution.



Immunofluorescence analysis of GANAB in methanol-fixed HeLa cells, using ab96757 at 1/200 dilution (1) and costained with Hoechst 33342 (2).

Immunocytochemistry/ Immunofluorescence - Anti-GANAB antibody (ab96757)

Please note: All products are "FOR RESEARCH USE ONLY. NOT FOR USE IN DIAGNOSTIC PROCEDURES"

Our Abpromise to you: Quality guaranteed and expert technical support

- Replacement or refund for products not performing as stated on the datasheet
- Valid for 12 months from date of delivery
- Response to your inquiry within 24 hours
- We provide support in Chinese, English, French, German, Japanese and Spanish
- Extensive multi-media technical resources to help you
- We investigate all quality concerns to ensure our products perform to the highest standards

If the product does not perform as described on this datasheet, we will offer a refund or replacement. For full details of the Abpromise, please visit <https://www.abcam.com/abpromise> or contact our technical team.

Terms and conditions

- Guarantee only valid for products bought direct from Abcam or one of our authorized distributors