



Product datasheet

Anti-Gankyrin antibody [OTI3F6] ab118009

[4 Images](#)

Overview

Product name	Anti-Gankyrin antibody [OTI3F6]
Description	Mouse monoclonal [OTI3F6] to Gankyrin
Host species	Mouse
Tested applications	Suitable for: Flow Cyt (Intra), WB
Species reactivity	Reacts with: Human
Immunogen	Recombinant full length protein corresponding to Human Gankyrin aa 1 to the C-terminus. Produced in HEK-293T cells (NP_002805). Database link: O75832
	 Run BLAST with  Run BLAST with
Positive control	WB: HEK-293T cell lysate transfected with the pCMV6-ENTRY Gankyrin cDNA; HepG2 cell extract. Flow Cyt (Intra): HeLa and Jurkat cells.
General notes	Clone OTI3F6 (formerly 3F6). The Life Science industry has been in the grips of a reproducibility crisis for a number of years. Abcam is leading the way in addressing this with our range of recombinant monoclonal antibodies and knockout edited cell lines for gold-standard validation. Please check that this product meets your needs before purchasing. If you have any questions, special requirements or concerns, please send us an inquiry and/or contact our Support team ahead of purchase. Recommended alternatives for this product can be found below, along with publications, customer reviews and Q&As

Properties

Form	Liquid
Storage instructions	Shipped at 4°C. Store at +4°C short term (1-2 weeks). Upon delivery aliquot. Store at -20°C. Avoid freeze / thaw cycle.
Storage buffer	pH: 7.30 Preservative: 0.02% Sodium azide Constituents: 1% BSA, 50% Glycerol, PBS
Purity	Affinity purified
Purification notes	Purified from cell culture supernatant.
Clonality	Monoclonal

Clone number	OTI3F6
Isotype	IgG1

Applications

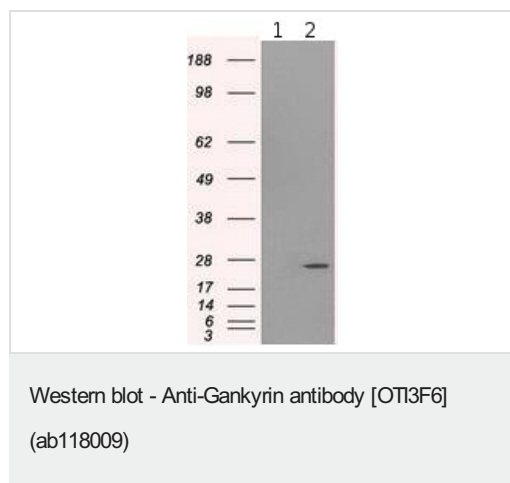
The Abpromise guarantee Our **Abpromise guarantee** covers the use of ab118009 in the following tested applications. The application notes include recommended starting dilutions; optimal dilutions/concentrations should be determined by the end user.

Application	Abreviews	Notes
Flow Cyt (Intra)		1/100.
WB		1/2000. Predicted molecular weight: 24 kDa.

Target

Function	<p>Acts as a chaperone during the assembly of the 26S proteasome, specifically of the PA700/19S regulatory complex (RC). In the initial step of the base subcomplex assembly is part of an intermediate PSMD10:PSMC4:PSMC5:PAAF1 module which probably assembles with a PSMD5:PSMC2:PSMC1:PSMD2 module.</p> <p>Acts as an proto-oncoprotein by being involved in negative regulation of tumor suppressors RB1 and p53/TP53. Overexpression is leading to phosphorylation of RB1 and proteasomal degradation of RB1. Regulates CDK4-mediated phosphorylation of RB1 by competing with CDKN2A for binding with CDK4. Facilitates binding of MDM2 to p53/TP53 and the mono- and polyubiquitination of p53/TP53 by MDM2 suggesting a function in targeting the TP53:MDM2 complex to the 26S proteasome. Involved in p53-independent apoptosis. Involved in regulation of NF-kappa-B by retaining it in the cytoplasm. Binds to the NF-kappa-B component RELA and accelerates its XPO1/CRM1-mediated nuclear export.</p>
Tissue specificity	Overexpressed in hepatocellular carcinomas.
Sequence similarities	Contains 7 ANK repeats.
Cellular localization	Cytoplasm. Nucleus.

Images



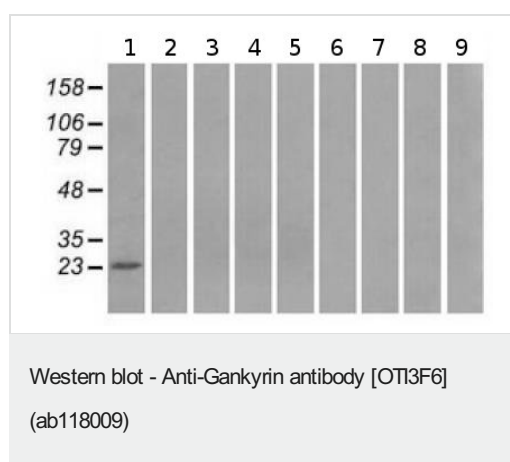
All lanes : Anti-Gankyrin antibody [OTI3F6] (ab118009) at 1/2000 dilution

Lane 1 : HEK-293T (human epithelial cell line from embryonic kidney transformed with large T antigen) cell lysate transfected with pCMV6-ENTRY control cDNA for 48 hrs

Lane 2 : HEK-293T lysate transfected with pCMV6-ENTRY Proteasome 26S S10 cDNA for 48 hrs

Lysates/proteins at 5 µg per lane.

Predicted band size: 24 kDa



All lanes : Anti-Gankyrin antibody [OTI3F6] (ab118009) at 1/2000 dilution

Lane 1 : HepG2 (human liver hepatocellular carcinoma cell line) cell extract

Lane 2 : HeLa (human epithelial cell line from cervix adenocarcinoma) cell extract

Lane 3 : HT-29 (human colorectal adenocarcinoma cell line) cell extract

Lane 4 : A549 (human lung carcinoma cell line) cell extract

Lane 5 : COS-7 (african green monkey kidney fibroblast-like cell line) cell extract

Lane 6 : Jurkat (human T cell leukemia cell line from peripheral blood) cell extract

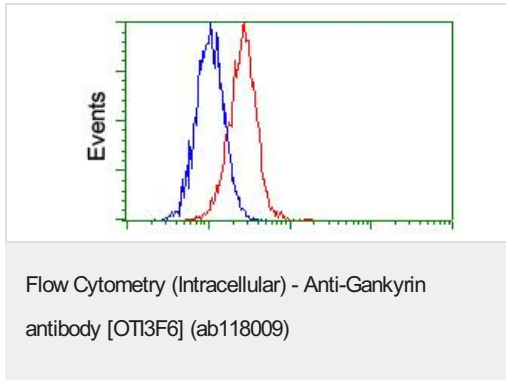
Lane 7 : MDCK (canine kidney cell line) extract

Lane 8 : PC-12 (rat adrenal gland pheochromocytoma cell line) cell extract

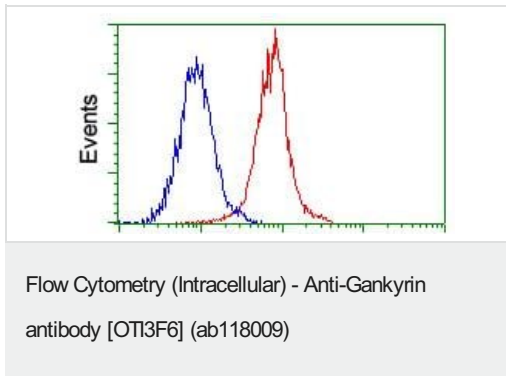
Lane 9 : MCF7 (human breast adenocarcinoma cell line) cell extract

Lysates/proteins at 35 µg per lane.

Predicted band size: 24 kDa



Flow cytometric analysis of HeLa (human epithelial cell line from cervix adenocarcinoma) cells labeling Gankyrin (red) using ab118009 at 1/100 dilution, compared to a nonspecific negative control antibody (blue).



Flow cytometric analysis of Jurkat (human T cell leukemia cell line from peripheral blood) cells labeling Gankyrin (red) using ab118009 at 1/100 dilution, compared to a nonspecific negative control antibody (blue).

Please note: All products are "FOR RESEARCH USE ONLY. NOT FOR USE IN DIAGNOSTIC PROCEDURES"

Our Abpromise to you: Quality guaranteed and expert technical support

- Replacement or refund for products not performing as stated on the datasheet
- Valid for 12 months from date of delivery
- Response to your inquiry within 24 hours
- We provide support in Chinese, English, French, German, Japanese and Spanish
- Extensive multi-media technical resources to help you
- We investigate all quality concerns to ensure our products perform to the highest standards

If the product does not perform as described on this datasheet, we will offer a refund or replacement. For full details of the Abpromise, please visit <https://www.abcam.com/abpromise> or contact our technical team.

Terms and conditions

- Guarantee only valid for products bought direct from Abcam or one of our authorized distributors