

Product datasheet

Anti-GAP43 antibody ab134019

★★★★★ [1 Abreviews](#) [1 References](#) [1 Image](#)

Overview

Product name	Anti-GAP43 antibody
Description	Chicken polyclonal to GAP43
Host species	Chicken
Tested applications	Suitable for: ICC/IF
Species reactivity	Reacts with: Mouse
Immunogen	Synthetic peptide corresponding to Mouse GAP43 (C terminal) conjugated to keyhole limpet haemocyanin.
General notes	<p>The Life Science industry has been in the grips of a reproducibility crisis for a number of years. Abcam is leading the way in addressing this with our range of recombinant monoclonal antibodies and knockout edited cell lines for gold-standard validation. Please check that this product meets your needs before purchasing.</p> <p>If you have any questions, special requirements or concerns, please send us an inquiry and/or contact our Support team ahead of purchase. Recommended alternatives for this product can be found below, along with publications, customer reviews and Q&As</p>

Properties

Form	Liquid
Storage instructions	Shipped at 4°C. Store at +4°C short term (1-2 weeks). Store at -20°C or -80°C. Avoid freeze / thaw cycle.
Storage buffer	<p>pH: 7</p> <p>Preservative: 0.02% Sodium azide</p> <p>Constituents: 99% PBS, 0.5% BSA</p>
Purity	Immunogen affinity purified
Purification notes	IgY fractions were purified from the yolks
Clonality	Polyclonal
Isotype	IgY

Applications

The Abpromise guarantee

Our **Abpromise guarantee** covers the use of ab134019 in the following tested applications.

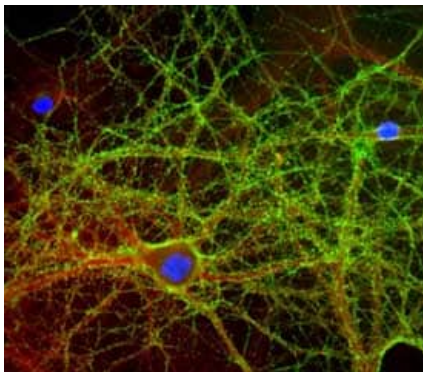
The application notes include recommended starting dilutions; optimal dilutions/concentrations should be determined by the end user.

Application	Abreviews	Notes
ICC/IF	★★★★★ (1)	1/1000 - 1/2000.

Target

Function	This protein is associated with nerve growth. It is a major component of the motile "growth cones" that form the tips of elongating axons.
Sequence similarities	Belongs to the neuromodulin family. Contains 1 IQ domain.
Post-translational modifications	Phosphorylation of this protein by a protein kinase C is specifically correlated with certain forms of synaptic plasticity.
Cellular localization	Cell membrane. Cell projection > growth cone membrane. Cell junction > synapse. Cytoplasmic surface of growth cone and synaptic plasma membranes.

Images



Immunocytochemistry at a dilution of 1:5000 labeling GAP43 in cultured cortical neurons from a neonatal mouse brain. Hoechst was used as nuclear counterstain (blue).

Immunocytochemistry/ Immunofluorescence - Anti-GAP43 antibody (ab134019)

Please note: All products are "FOR RESEARCH USE ONLY. NOT FOR USE IN DIAGNOSTIC PROCEDURES"

Our Abpromise to you: Quality guaranteed and expert technical support

- Replacement or refund for products not performing as stated on the datasheet
- Valid for 12 months from date of delivery
- Response to your inquiry within 24 hours
- We provide support in Chinese, English, French, German, Japanese and Spanish
- Extensive multi-media technical resources to help you
- We investigate all quality concerns to ensure our products perform to the highest standards

If the product does not perform as described on this datasheet, we will offer a refund or replacement. For full details of the Abpromise, please visit <https://www.abcam.com/abpromise> or contact our technical team.

Terms and conditions

- Guarantee only valid for products bought direct from Abcam or one of our authorized distributors