


## Product datasheet

# Anti-GAPDH antibody ab263962

[1 References](#) [1 Image](#)

### Overview

---

<b>Product name</b>	Anti-GAPDH antibody
<b>Description</b>	Rabbit polyclonal to GAPDH
<b>Host species</b>	Rabbit
<b>Specificity</b>	Broad reactivity makes this antibody an excellent loading control.
<b>Tested applications</b>	<b>Suitable for:</b> WB
<b>Species reactivity</b>	<b>Reacts with:</b> Mouse, Human <b>Predicted to work with:</b> a wide range of other species 
<b>Immunogen</b>	Synthetic peptide corresponding to Human GAPDH (N terminal). Database link: <a href="#">P04406</a>
<b>Positive control</b>	WB: NIH/3T3, HEK-293, Molt-4, A549, Jurkat and HeLa lysate. HeLa nuclear lysate.
<b>General notes</b>	<p>The Life Science industry has been in the grips of a reproducibility crisis for a number of years. Abcam is leading the way in addressing this with our range of recombinant monoclonal antibodies and knockout edited cell lines for gold-standard validation. Please check that this product meets your needs before purchasing.</p> <p>If you have any questions, special requirements or concerns, please send us an inquiry and/or contact our Support team ahead of purchase. Recommended alternatives for this product can be found below, along with publications, customer reviews and Q&amp;As</p>

### Properties

---

<b>Form</b>	Liquid
<b>Storage instructions</b>	Shipped at 4°C. Store at +4°C short term (1-2 weeks). Upon delivery aliquot. Store at -20°C long term. Avoid freeze / thaw cycle.
<b>Storage buffer</b>	Preservative: 0.01% Sodium azide Constituents: 0.87% Sodium chloride, 0.42% Potassium phosphate
<b>Purity</b>	Immunogen affinity purified
<b>Clonality</b>	Polyclonal
<b>Isotype</b>	IgG

## Applications

### The Abpromise guarantee

Our **Abpromise guarantee** covers the use of ab263962 in the following tested applications.

The application notes include recommended starting dilutions; optimal dilutions/concentrations should be determined by the end user.

Application	Abreviews	Notes
WB		Use a concentration of 1 µg/ml. Predicted molecular weight: 36 kDa.

## Target

### Function

Has both glyceraldehyde-3-phosphate dehydrogenase and nitrosylase activities, thereby playing a role in glycolysis and nuclear functions, respectively. Participates in nuclear events including transcription, RNA transport, DNA replication and apoptosis. Nuclear functions are probably due to the nitrosylase activity that mediates cysteine S-nitrosylation of nuclear target proteins such as SIRT1, HDAC2 and PRKDC (By similarity). Glyceraldehyde-3-phosphate dehydrogenase is a key enzyme in glycolysis that catalyzes the first step of the pathway by converting D-glyceraldehyde 3-phosphate (G3P) into 3-phospho-D-glyceroyl phosphate.

### Pathway

Carbohydrate degradation; glycolysis; pyruvate from D-glyceraldehyde 3-phosphate: step 1/5.

### Sequence similarities

Belongs to the glyceraldehyde-3-phosphate dehydrogenase family.

### Post-translational modifications

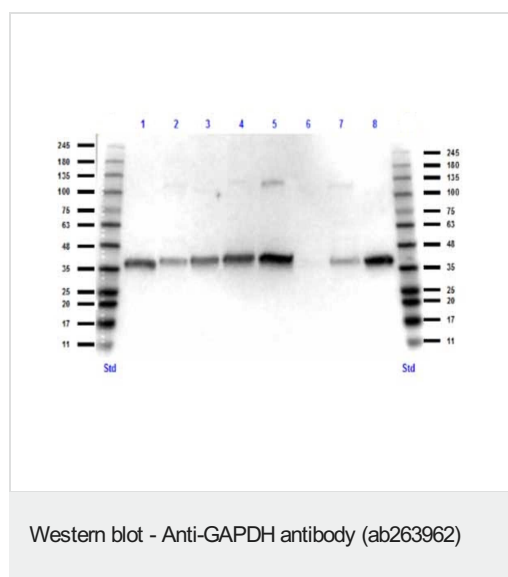
S-nitrosylation of Cys-152 leads to interaction with SIAH1, followed by translocation to the nucleus.

ISGylated.

### Cellular localization

Cytoplasm > cytosol. Nucleus. Cytoplasm > perinuclear region. Membrane. Translocates to the nucleus following S-nitrosylation and interaction with SIAH1, which contains a nuclear localization signal (By similarity). Postnuclear and Perinuclear regions.

## Images



**All lanes** : Anti-GAPDH antibody (ab263962) at 1/1000 dilution (overnight at 4degC)

**Lane 1** : NIH/3T3 (mouse embryo fibroblast cell line) lysate

**Lane 2** : HEK-293 (human epithelial cell line from embryonic kidney) lysate

**Lane 3** : Molt-4 (human lymphoblastic leukemia cell line) lysate

**Lane 4** : A549 (human lung carcinoma cell line) lysate

**Lane 5** : HeLa (human epithelial cell line from cervix adenocarcinoma) lysate

**Lane 6** : NIH/3T3 nuclear lysate

**Lane 7** : HeLa nuclear lysate

**Lane 8** : Jurkat (human T cell leukemia cell line from peripheral blood) lysate

Lysates/proteins at 35 µg per lane.

**Secondary**

**All lanes** : Peroxidase rabbit secondary antibody for 30 min at RT  
at 1/70000 dilution

**Predicted band size:** 36 kDa

**Please note:** All products are "FOR RESEARCH USE ONLY. NOT FOR USE IN DIAGNOSTIC PROCEDURES"

**Our Abpromise to you: Quality guaranteed and expert technical support**

---

- Replacement or refund for products not performing as stated on the datasheet
- Valid for 12 months from date of delivery
- Response to your inquiry within 24 hours
- We provide support in Chinese, English, French, German, Japanese and Spanish
- Extensive multi-media technical resources to help you
- We investigate all quality concerns to ensure our products perform to the highest standards

If the product does not perform as described on this datasheet, we will offer a refund or replacement. For full details of the Abpromise, please visit <https://www.abcam.com/abpromise> or contact our technical team.

**Terms and conditions**

---

- Guarantee only valid for products bought direct from Abcam or one of our authorized distributors