




Product datasheet

Anti-GAPDH antibody - Loading Control ab22555

★★★★★ [4 Abreviews](#) [106 References](#) [2 Images](#)

Overview

Product name	Anti-GAPDH antibody - Loading Control
Description	Rabbit polyclonal to GAPDH - Loading Control
Host species	Rabbit
Tested applications	Suitable for: WB
Species reactivity	Reacts with: Mouse, Rat, Dog, Human, African green monkey Predicted to work with: Sheep, Rabbit, Horse, Chicken, Guinea pig, Cow, Cat, Turkey, Pig, Duck 
Immunogen	Synthetic peptide: DAPMFVMGVNHFKEYA , corresponding to amino acids 126-140 of Human GAPDH.  Run BLAST with  Run BLAST with
General notes	<p>The Life Science industry has been in the grips of a reproducibility crisis for a number of years. Abcam is leading the way in addressing this with our range of recombinant monoclonal antibodies and knockout edited cell lines for gold-standard validation. Please check that this product meets your needs before purchasing.</p> <p>If you have any questions, special requirements or concerns, please send us an inquiry and/or contact our Support team ahead of purchase. Recommended alternatives for this product can be found below, along with publications, customer reviews and Q&As</p>

Properties

Form	Liquid
Storage instructions	Shipped at 4°C. Upon delivery aliquot and store at -20°C. Avoid freeze / thaw cycles.
Storage buffer	Preservative: 0.05% Sodium azide Constituents: PBS, 0.1% BSA
Purity	Immunogen affinity purified
Clonality	Polyclonal
Isotype	IgG

Applications

The Abpromise guarantee

Our **Abpromise guarantee** covers the use of ab22555 in the following tested applications.

The application notes include recommended starting dilutions; optimal dilutions/concentrations should be determined by the end user.

Application	Abreviews	Notes
WB	★★★★★ (4)	1/1000 - 1/5000. Detects a band of approximately 36 kDa.

Target

Function

Has both glyceraldehyde-3-phosphate dehydrogenase and nitrosylase activities, thereby playing a role in glycolysis and nuclear functions, respectively. Participates in nuclear events including transcription, RNA transport, DNA replication and apoptosis. Nuclear functions are probably due to the nitrosylase activity that mediates cysteine S-nitrosylation of nuclear target proteins such as SIRT1, HDAC2 and PRKDC (By similarity). Glyceraldehyde-3-phosphate dehydrogenase is a key enzyme in glycolysis that catalyzes the first step of the pathway by converting D-glyceraldehyde 3-phosphate (G3P) into 3-phospho-D-glyceroyl phosphate.

Pathway

Carbohydrate degradation; glycolysis; pyruvate from D-glyceraldehyde 3-phosphate: step 1/5.

Sequence similarities

Belongs to the glyceraldehyde-3-phosphate dehydrogenase family.

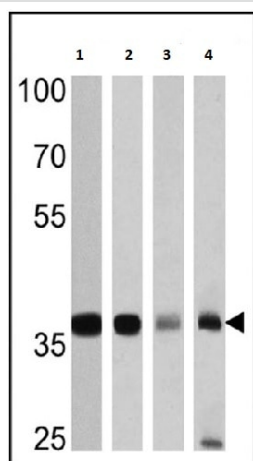
Post-translational modifications

S-nitrosylation of Cys-152 leads to interaction with SIAH1, followed by translocation to the nucleus.
ISGylated.

Cellular localization

Cytoplasm > cytosol. Nucleus. Cytoplasm > perinuclear region. Membrane. Translocates to the nucleus following S-nitrosylation and interaction with SIAH1, which contains a nuclear localization signal (By similarity). Postnuclear and Perinuclear regions.

Images



Lane 1 : Anti-GAPDH antibody - Loading Control (ab22555)

Lanes 2-4 : Anti-GAPDH antibody - Loading Control (ab22555) at 1/1000 dilution

Lane 1 : HeLa cell lysate

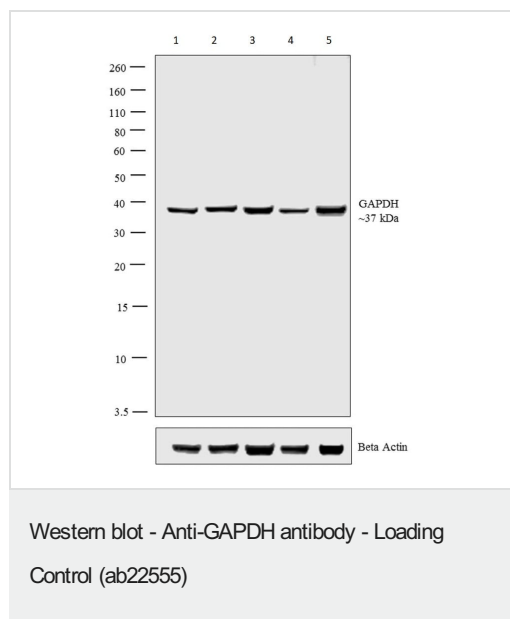
Lane 2 : 293 cell lysate

Lane 3 : HUVEC cell lysate

Lane 4 : PC12 cell lysate

Lysates/proteins at 25 µg per lane.

Western blot - Anti-GAPDH antibody - Loading Control (ab22555)



All lanes : Anti-GAPDH antibody - Loading Control (ab22555) at 1/1000 dilution

Lane 1 : A431 cell lysate

Lane 2 : COS-7 cell lysate

Lane 3 : MDCK cell lysate

Lane 4 : PC-3 cell lysate

Lane 5 : Mouse brain tissue lysate

Lysates/proteins at 30 µg per lane.

Secondary

All lanes : Goat anti-Rabbit IgG (H+L) Superclonal™ HRP conjugate at 1/4000 dilution

Observed band size: 37 kDa

Please note: All products are "FOR RESEARCH USE ONLY. NOT FOR USE IN DIAGNOSTIC PROCEDURES"

Our Abpromise to you: Quality guaranteed and expert technical support

- Replacement or refund for products not performing as stated on the datasheet
- Valid for 12 months from date of delivery
- Response to your inquiry within 24 hours
- We provide support in Chinese, English, French, German, Japanese and Spanish
- Extensive multi-media technical resources to help you
- We investigate all quality concerns to ensure our products perform to the highest standards

If the product does not perform as described on this datasheet, we will offer a refund or replacement. For full details of the Abpromise, please visit <https://www.abcam.com/abpromise> or contact our technical team.

Terms and conditions

- Guarantee only valid for products bought direct from Abcam or one of our authorized distributors