

Product datasheet

Anti-GAS 6 antibody ab136249

★★★★☆ [3 Abreviews](#) [4 References](#) [1 Image](#)

Overview

Product name	Anti-GAS 6 antibody
Description	Rabbit polyclonal to GAS 6
Host species	Rabbit
Tested applications	Suitable for: WB
Species reactivity	Reacts with: Human
Immunogen	Synthetic peptide derived from an internal region of Human GAS 6.
General notes	<p>The Life Science industry has been in the grips of a reproducibility crisis for a number of years. Abcam is leading the way in addressing this with our range of recombinant monoclonal antibodies and knockout edited cell lines for gold-standard validation. Please check that this product meets your needs before purchasing.</p> <p>If you have any questions, special requirements or concerns, please send us an inquiry and/or contact our Support team ahead of purchase. Recommended alternatives for this product can be found below, along with publications, customer reviews and Q&As</p>

Properties

Form	Liquid
Storage instructions	Shipped at 4°C. Store at -20°C.
Storage buffer	<p>pH: 7.40</p> <p>Preservative: 0.02% Sodium azide</p> <p>Constituents: 49% PBS, 0.88% Sodium chloride, 50% Glycerol</p> <p>PBS is without Mg^{2+} and Ca^{2+}.</p>
Purity	Immunogen affinity purified
Purification notes	ab136249 was affinity-purified from rabbit antiserum by immunogenic peptide affinity-chromatography.
Clonality	Polyclonal
Isotype	IgG

Applications

The Abpromise guarantee

Our **Abpromise guarantee** covers the use of ab136249 in the following tested applications.

The application notes include recommended starting dilutions; optimal dilutions/concentrations should be determined by the end user.

Application	Abreviews	Notes
WB	★★★★★ (2)	1/500 - 1/1000. Predicted molecular weight: 80 kDa.

Target

Function

Ligand for tyrosine-protein kinase receptors AXL, TYRO3 and MER whose signaling is implicated in cell growth and survival, cell adhesion and cell migration. GAS6/AXL signaling plays a role in various processes such as endothelial cell survival during acidification by preventing apoptosis, optimal cytokine signaling during human natural killer cell development, hepatic regeneration, gonadotropin-releasing hormone neuron survival and migration, platelet activation, or regulation of thrombotic responses.

Tissue specificity

Plasma. Isoform 1 and isoform 2 are widely expressed. Isoform 1 is the predominant form in spleen.

Sequence similarities

Contains 4 EGF-like domains.
Contains 1 Gla (gamma-carboxy-glutamate) domain.
Contains 2 laminin G-like domains.

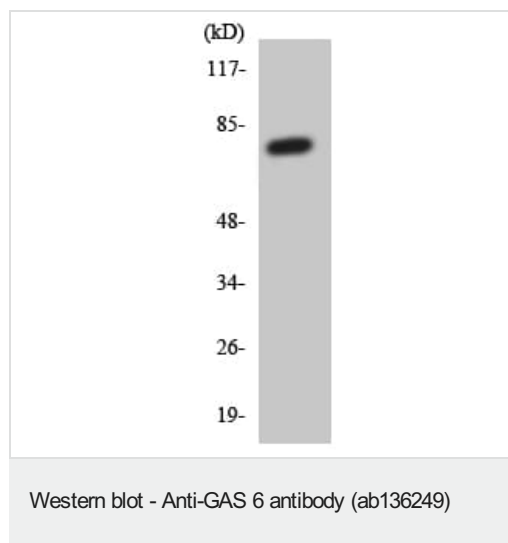
Post-translational modifications

Isoform 1 is proteolytically processed after secretion to yield a N-terminal 36 kDa protein and a C-terminal 50 kDa protein including the laminin G-like domains which activates AXL.
Gamma-carboxyglutamate residues are formed by vitamin K dependent carboxylation. These residues are essential for the binding of calcium.

Cellular localization

Secreted.

Images



Anti-GAS 6 antibody (ab136249) at 1/500 dilution + HT29 cell lysate at 30 µg

Predicted band size: 80 kDa

Please note: All products are "FOR RESEARCH USE ONLY. NOT FOR USE IN DIAGNOSTIC PROCEDURES"

Our Abpromise to you: Quality guaranteed and expert technical support

- Replacement or refund for products not performing as stated on the datasheet
- Valid for 12 months from date of delivery
- Response to your inquiry within 24 hours

- We provide support in Chinese, English, French, German, Japanese and Spanish
- Extensive multi-media technical resources to help you
- We investigate all quality concerns to ensure our products perform to the highest standards

If the product does not perform as described on this datasheet, we will offer a refund or replacement. For full details of the Abpromise, please visit <https://www.abcam.com/abpromise> or contact our technical team.

Terms and conditions

- Guarantee only valid for products bought direct from Abcam or one of our authorized distributors