

## Product datasheet

# Anti-Gastrokine 1 antibody ab231952

[7 Images](#)

### Overview

---

<b>Product name</b>	Anti-Gastrokine 1 antibody
<b>Description</b>	Rabbit polyclonal to Gastrokine 1
<b>Host species</b>	Rabbit
<b>Tested applications</b>	<b>Suitable for:</b> IHC-P, WB
<b>Species reactivity</b>	<b>Reacts with:</b> Rat, Human, Pig
<b>Immunogen</b>	Recombinant fragment corresponding to Human Gastrokine 1 aa 1 to the C-terminus. N-terminal His-tag and GST-tag; Expressed in E.coli. Database link: <a href="#">Q9NS71</a> <a href="#">Run BLAST with</a> <a href="#">Run BLAST with</a>
<b>Positive control</b>	IHC-P: Human kidney, stomach, pancreas, prostate and liver tissue. WB: Recombinant human Gastrokine 1 protein; Pig and rat stomach tissue lysate.
<b>General notes</b>	<p>The Life Science industry has been in the grips of a reproducibility crisis for a number of years. Abcam is leading the way in addressing this with our range of recombinant monoclonal antibodies and knockout edited cell lines for gold-standard validation. Please check that this product meets your needs before purchasing.</p> <p>If you have any questions, special requirements or concerns, please send us an inquiry and/or contact our Support team ahead of purchase. Recommended alternatives for this product can be found below, along with publications, customer reviews and Q&amp;As</p>

### Properties

---

<b>Form</b>	Liquid
<b>Storage instructions</b>	Shipped at 4°C. Store at +4°C short term (1-2 weeks). Upon delivery aliquot. Store at -20°C long term. Avoid freeze / thaw cycle.
<b>Storage buffer</b>	pH: 7.40 Preservative: 0.011% Proclin 300 Constituents: 55.77% Glycerol (glycerin, glycerine), 44.219% PBS
<b>Purity</b>	Immunogen affinity purified
<b>Purification notes</b>	Antigen-specific affinity chromatography followed by Protein A affinity chromatography.
<b>Clonality</b>	Polyclonal
<b>Isotype</b>	IgG

## Applications

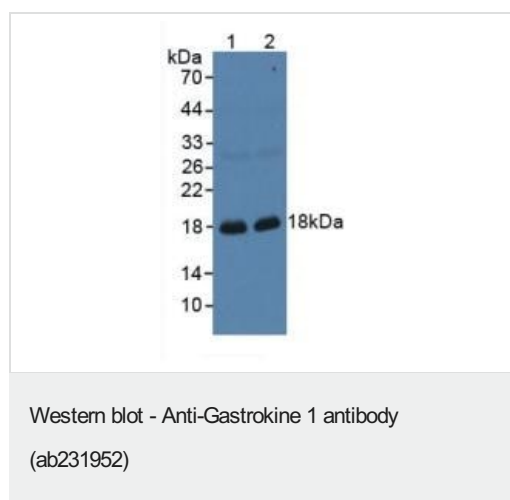
**The Abpromise guarantee** Our **Abpromise guarantee** covers the use of ab231952 in the following tested applications. The application notes include recommended starting dilutions; optimal dilutions/concentrations should be determined by the end user.

Application	Abreviews	Notes
IHC-P		Use a concentration of 5 - 20 µg/ml.
WB		Use a concentration of 0.5 - 2 µg/ml.

## Target

<b>Function</b>	Has mitogenic activity and may be involved in maintaining the integrity of the gastric mucosal epithelium.
<b>Tissue specificity</b>	Expressed in stomach. No expression is detected in cancer tissue or gastric cancer cell lines.
<b>Sequence similarities</b>	Belongs to the gastrokine family. Contains 1 BRICHOS domain.
<b>Cellular localization</b>	Secreted.

## Images



**All lanes** : Anti-Gastrokine 1 antibody (ab231952) at 1 µg/ml

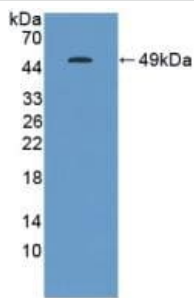
**Lane 1** : Pig stomach tissue lysate.

**Lane 2** : Rat stomach tissue lysate.

### Secondary

**All lanes** : HRP-Linked Guinea pig Anti-Rabbit Ab at 1/2000 dilution

Developed using the ECL technique.



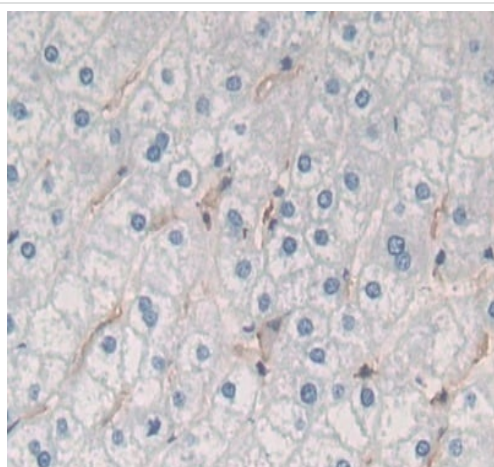
Western blot - Anti-Gastrokine 1 antibody  
(ab231952)

Anti-Gastrokine 1 antibody (ab231952) at 1  $\mu\text{g/ml}$  + Recombinant human Gastrokine 1 protein.

### Secondary

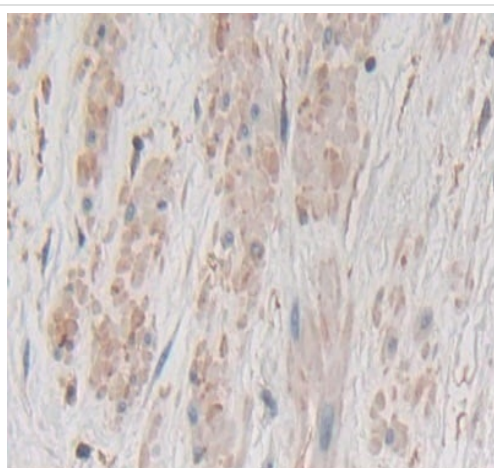
HRP-Linked Guinea pig Anti-Rabbit Ab at 1/2000 dilution

Developed using the ECL technique.



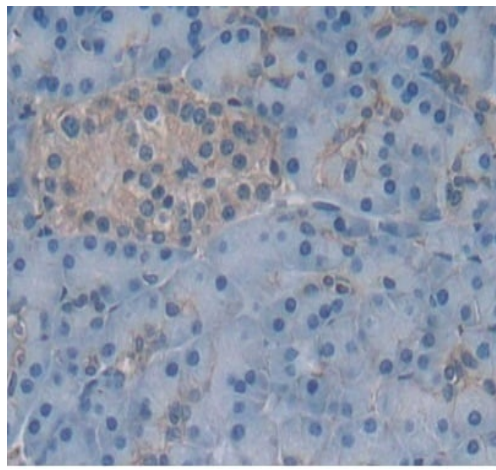
Immunohistochemistry (Formalin/PFA-fixed paraffin-embedded sections) - Anti-Gastrokine 1 antibody  
(ab231952)

Formalin-fixed, paraffin-embedded human liver tissue stained for Gastrokine 1 using ab231952 at 20  $\mu\text{g/mL}$  in immunohistochemical analysis. DAB staining.



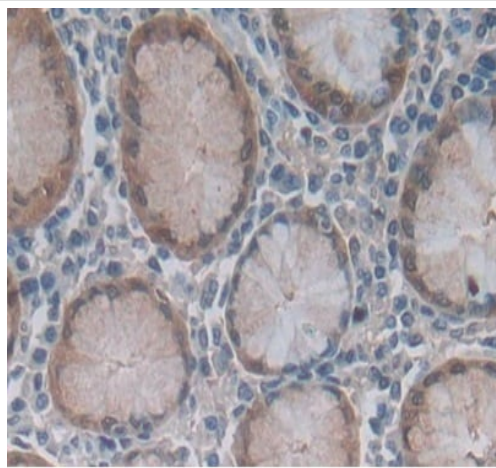
Immunohistochemistry (Formalin/PFA-fixed paraffin-embedded sections) - Anti-Gastrokine 1 antibody  
(ab231952)

Formalin-fixed, paraffin-embedded human prostate tissue stained for Gastrokine 1 using ab231952 at 20  $\mu\text{g/mL}$  in immunohistochemical analysis. DAB staining.



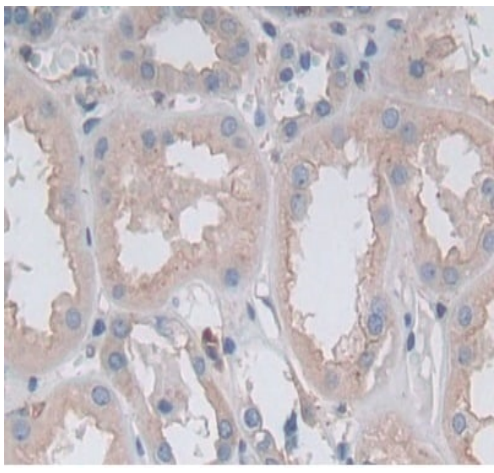
Formalin-fixed, paraffin-embedded human pancreas tissue stained for Gastrokine 1 using ab231952 at 20  $\mu\text{g}/\text{mL}$  in immunohistochemical analysis. DAB staining.

Immunohistochemistry (Formalin/PFA-fixed paraffin-embedded sections) - Anti-Gastrokine 1 antibody (ab231952)



Formalin-fixed, paraffin-embedded human stomach tissue stained for Gastrokine 1 using ab231952 at 20  $\mu\text{g}/\text{mL}$  in immunohistochemical analysis. DAB staining.

Immunohistochemistry (Formalin/PFA-fixed paraffin-embedded sections) - Anti-Gastrokine 1 antibody (ab231952)



Formalin-fixed, paraffin-embedded human kidney tissue stained for Gastrokine 1 using ab231952 at 20µg/mL in immunohistochemical analysis. DAB staining.

Immunohistochemistry (Formalin/PFA-fixed paraffin-embedded sections) - Anti-Gastrokine 1 antibody (ab231952)

**Please note:** All products are "FOR RESEARCH USE ONLY. NOT FOR USE IN DIAGNOSTIC PROCEDURES"

#### **Our Abpromise to you: Quality guaranteed and expert technical support**

---

- Replacement or refund for products not performing as stated on the datasheet
- Valid for 12 months from date of delivery
- Response to your inquiry within 24 hours
- We provide support in Chinese, English, French, German, Japanese and Spanish
- Extensive multi-media technical resources to help you
- We investigate all quality concerns to ensure our products perform to the highest standards

If the product does not perform as described on this datasheet, we will offer a refund or replacement. For full details of the Abpromise, please visit <https://www.abcam.com/abpromise> or contact our technical team.

#### **Terms and conditions**

---

- Guarantee only valid for products bought direct from Abcam or one of our authorized distributors