


## Product datasheet

### Anti-Gata6 antibody ab22600

★★★★★ [5 Abreviews](#) [28 References](#) [1 Image](#)

#### Overview

<b>Product name</b>	Anti-Gata6 antibody
<b>Description</b>	Rabbit polyclonal to Gata6
<b>Host species</b>	Rabbit
<b>Tested applications</b>	<b>Suitable for:</b> WB
<b>Species reactivity</b>	<b>Reacts with:</b> Mouse <b>Predicted to work with:</b> Rat, Chicken, Cow, Human, Pig 
<b>Immunogen</b>	Synthetic peptide corresponding to Human Gata6 aa 400 to the C-terminus conjugated to keyhole limpet haemocyanin. (Peptide available as <a href="#">ab24410</a> , <a href="#">ab24411</a> )
<b>General notes</b>	<p>The Life Science industry has been in the grips of a reproducibility crisis for a number of years. Abcam is leading the way in addressing this with our range of recombinant monoclonal antibodies and knockout edited cell lines for gold-standard validation. Please check that this product meets your needs before purchasing.</p> <p>If you have any questions, special requirements or concerns, please send us an inquiry and/or contact our Support team ahead of purchase. Recommended alternatives for this product can be found below, along with publications, customer reviews and Q&amp;As</p>

#### Properties

<b>Form</b>	Liquid
<b>Storage instructions</b>	Shipped at 4°C. Store at +4°C short term (1-2 weeks). Upon delivery aliquot. Store at -20°C or -80°C. Avoid freeze / thaw cycle.
<b>Storage buffer</b>	pH: 7.40 Preservative: 0.02% Sodium azide Constituent: PBS  Batches of this product that have a concentration < 1mg/ml may have BSA added as a stabilising agent. If you would like information about the formulation of a specific lot, please contact our scientific support team who will be happy to help.
<b>Purity</b>	Immunogen affinity purified
<b>Clonality</b>	Polyclonal

Isotype

IgG

## Applications

### The Abpromise guarantee

Our **Abpromise guarantee** covers the use of ab22600 in the following tested applications.

The application notes include recommended starting dilutions; optimal dilutions/concentrations should be determined by the end user.

Application	Abreviews	Notes
WB	★★★★★ (3)	Use a concentration of 1 µg/ml. Detects a band of approximately 45 kDa (predicted molecular weight: 45 kDa). Abcam recommends using milk as the blocking agent.

## Target

### Function

Thought to be important for regulating terminal differentiation and/or proliferation.

### Tissue specificity

Expressed in heart, gut and gut-derived tissues.

### Sequence similarities

Contains 2 GATA-type zinc fingers.

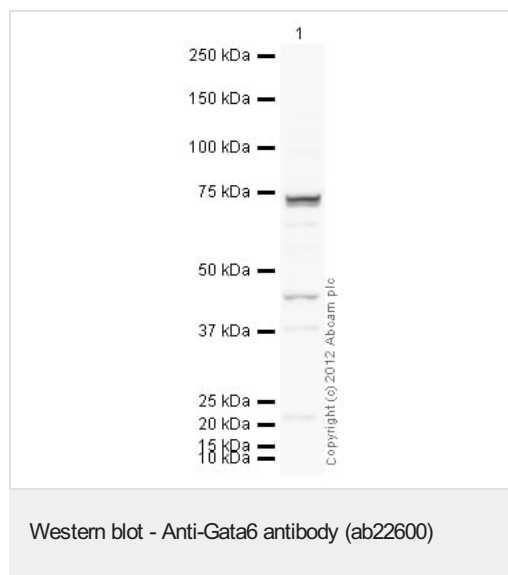
### Domain

The GATA-type zinc fingers mediate interaction with LMCD1.

### Cellular localization

Nucleus.

## Images



Anti-Gata6 antibody (ab22600) at 1 µg/ml + D3 ES Cells Day 15  
EB (Gata6 +ve) at 10 µg

### Secondary

IRDye 680 Conjugated Goat Anti-Rabbit IgG at 1/10000 dilution

Developed using the ECL technique.

Performed under reducing conditions.

**Predicted band size:** 45 kDa

**Observed band size:** 45 kDa

**Additional bands at:** 73 kDa. We are unsure as to the identity of these extra bands.

**Exposure time:** 2 minutes

**Please note:** All products are "FOR RESEARCH USE ONLY. NOT FOR USE IN DIAGNOSTIC PROCEDURES"

### **Our Abpromise to you: Quality guaranteed and expert technical support**

---

- Replacement or refund for products not performing as stated on the datasheet
- Valid for 12 months from date of delivery
- Response to your inquiry within 24 hours
  
- We provide support in Chinese, English, French, German, Japanese and Spanish
- Extensive multi-media technical resources to help you
- We investigate all quality concerns to ensure our products perform to the highest standards

If the product does not perform as described on this datasheet, we will offer a refund or replacement. For full details of the Abpromise, please visit <https://www.abcam.com/abpromise> or contact our technical team.

### **Terms and conditions**

---

- Guarantee only valid for products bought direct from Abcam or one of our authorized distributors