

Anti-GBAS antibody [OTI1B8] ab139357

9 Images

Overview

Product name	Anti-GBAS antibody [OTI1B8]
Description	Mouse monoclonal [OTI1B8] to GBAS
Host species	Mouse
Tested applications	Suitable for: WB, IHC-P, ICC/IF
Species reactivity	Reacts with: Mouse, Rat, Dog, Human, African green monkey
Immunogen	<p>Recombinant full length protein corresponding to Human GBAS aa 1-286. Produced in E.coli (NP_001474).</p> <p>Sequence:</p> <p>MAARVLRARGAAWAGGLLQRAAPCSLLPRLRTWTSSSN RSREDSWLKSLF VRKVDPRKDAHSNLLAKKETSPLYKLQFHNVKPECLEAY NKICQEVLPKI HEDKHYPCTLVGTWNTWYGEQDQAVHLWRYEGGYPALT EVMNKLRENKEF LEFRKARSDMLLSRKNQLLLEFSFWNEPVPRSGPNIELR SYQLRPGTMI EWGNYWARAIRFRQDGNFVGGFFSQIGQLYMHHLWAY RDLQTREDIRN AAWHKHGWEELVYYTVPLIQEMESRIMPLKTSPLQ</p>

Database link: [O75323](#)

 [Run BLAST with](#)

 [Run BLAST with](#)

Positive control	WB: HEK-293T cell lysate transfected with pCMV6-ENTRY GBAS cDNA; HepG2, HeLa, SVT2, A549, COS7, Jurkat, MDCK, PC12 and MCF7 cell extracts; Human testis uterus, breast, brain, liver, ovary, thyroid gland and colon extracts. IHC-P: Human colon adenocarcinoma, kidney, ovary adenocarcinoma and endometrium adenocarcinoma tissues. ICC/IF: COS-7 cells transiently transfected with pCMV6-ENTRY GBAS; HeLa cells.
-------------------------	---

General notes	Clone OTI1B8 (formerly 1B8).
----------------------	------------------------------

The Life Science industry has been in the grips of a reproducibility crisis for a number of years. Abcam is leading the way in addressing this with our range of recombinant monoclonal antibodies and knockout edited cell lines for gold-standard validation. Please check that this product meets your needs before purchasing.

If you have any questions, special requirements or concerns, please send us an inquiry and/or

contact our Support team ahead of purchase. Recommended alternatives for this product can be found below, along with publications, customer reviews and Q&As

Properties

Form	Liquid
Storage instructions	Shipped at 4°C. Store at +4°C short term (1-2 weeks). Upon delivery aliquot. Store at -20°C. Avoid freeze / thaw cycle.
Storage buffer	pH: 7.30 Preservative: 0.02% Sodium azide Constituents: PBS, 1% BSA, 50% Glycerol
Purity	Affinity purified
Purification notes	Purified from cell culture supernatant by affinity chromatography.
Clonality	Monoclonal
Clone number	OT1B8
Isotype	IgG1

Applications

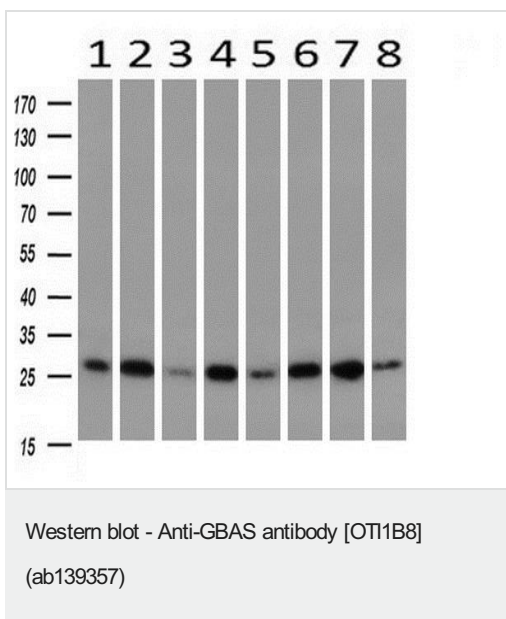
The Abpromise guarantee Our **Abpromise guarantee** covers the use of ab139357 in the following tested applications. The application notes include recommended starting dilutions; optimal dilutions/concentrations should be determined by the end user.

Application	Abreviews	Notes
WB		1/200 - 1/2000. Predicted molecular weight: 34 kDa.
IHC-P		1/150.
ICC/IF		1/50 - 1/100.

Target

Tissue specificity	Widely expressed. Most abundant in heart and skeletal muscle.
Sequence similarities	Belongs to the NipSnap family.

Images

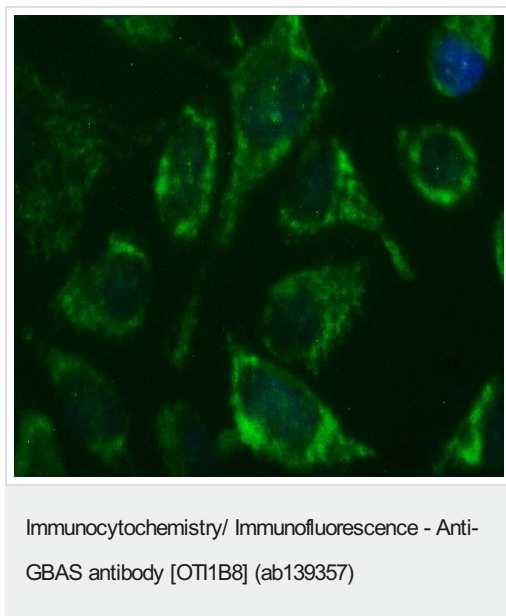


All lanes : Anti-GBAS antibody [OTI1B8] (ab139357) at 1/200 dilution

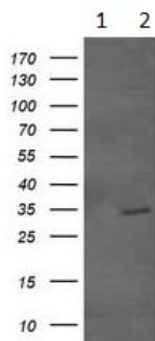
- Lane 1 :** Human testis extract
- Lane 2 :** Human uterus extract
- Lane 3 :** Human breast extract
- Lane 4 :** Human brain extract
- Lane 5 :** Human liver extract
- Lane 6 :** Human ovary extract
- Lane 7 :** Human thyroid gland extract
- Lane 8 :** Human colon extract

Lysates/proteins at 10 µg per lane.

Predicted band size: 34 kDa



HeLa (human epithelial cell line from cervix adenocarcinoma) cells stained for GBAS (green) using ab139357 at 1/100 dilution in ICC/IF.



Western blot - Anti-GBAS antibody [OTI1B8]
(ab139357)

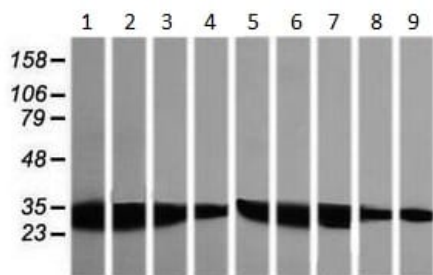
All lanes : Anti-GBAS antibody [OTI1B8] (ab139357) at 1/200 dilution

Lane 1 : HEK-293T (human epithelial cell line from embryonic kidney transformed with large T antigen) cell lysate transfected with the pCMV6-ENTRY control cDNA

Lane 2 : HEK-293T cell lysate transfected with pCMV6-ENTRY GBAS cDNA

Lysates/proteins at 5 µg per lane.

Predicted band size: 34 kDa



Western blot - Anti-GBAS antibody [OTI1B8]
(ab139357)

All lanes : Anti-GBAS antibody [OTI1B8] (ab139357) at 1/200 dilution

Lane 1 : HepG2 (human liver hepatocellular carcinoma cell line) cell extract

Lane 2 : HeLa (human epithelial cell line from cervix adenocarcinoma) cell extract

Lane 3 : SVT2 cell extract

Lane 4 : A549 (human lung carcinoma cell line) cell extract

Lane 5 : COS7 (african green monkey kidney fibroblast-like cell line) cell extract

Lane 6 : Jurkat (human T cell leukemia cell line from peripheral blood) cell extract

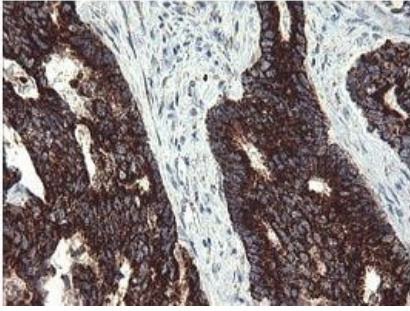
Lane 7 : MDCK (canine kidney cell line) cell extract

Lane 8 : PC-12 (rat adrenal gland pheochromocytoma cell line) cell extract

Lane 9 : MCF7 (human breast adenocarcinoma cell line) cell extract

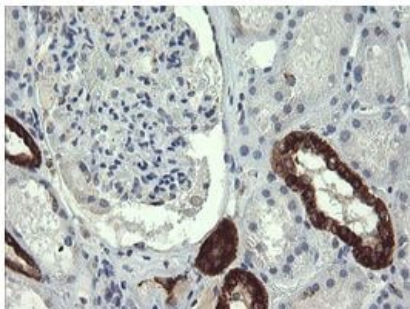
Lysates/proteins at 35 µg per lane.

Predicted band size: 34 kDa



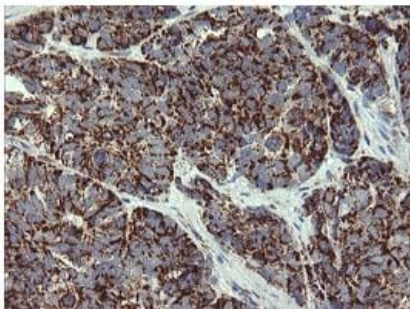
Paraffin-embedded human colon adenocarcinoma tissue stained for GBAS using ab139357 at 1/150 dilution in immunohistochemical analysis.

Immunohistochemistry (Formalin/PFA-fixed paraffin-embedded sections) - Anti-GBAS antibody [OT1B8] (ab139357)



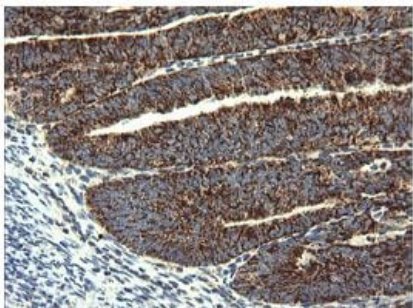
Paraffin-embedded human kidney tissue stained for GBAS using ab139357 at 1/150 dilution in immunohistochemical analysis.

Immunohistochemistry (Formalin/PFA-fixed paraffin-embedded sections) - Anti-GBAS antibody [OT1B8] (ab139357)



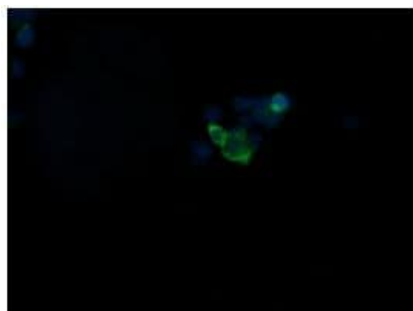
Paraffin-embedded human ovary adenocarcinoma tissue stained for GBAS using ab139357 at 1/150 dilution in immunohistochemical analysis.

Immunohistochemistry (Formalin/PFA-fixed paraffin-embedded sections) - Anti-GBAS antibody [OT1B8] (ab139357)



Paraffin-embedded human endometrium adenocarcinoma tissue stained for GBAS using ab139357 at 1/150 dilution in immunohistochemical analysis.

Immunohistochemistry (Formalin/PFA-fixed paraffin-embedded sections) - Anti-GBAS antibody [OT1B8] (ab139357)



COS-7 (african green monkey kidney fibroblast-like cell line) cells transiently transfected by pCMV6-ENTRY GBAS stained for GBAS (green) using ab139357 at 1/50 dilution in ICC/IF.

Immunocytochemistry/ Immunofluorescence - Anti-GBAS antibody [OT1B8] (ab139357)

Please note: All products are "FOR RESEARCH USE ONLY. NOT FOR USE IN DIAGNOSTIC PROCEDURES"

Our Abpromise to you: Quality guaranteed and expert technical support

- Replacement or refund for products not performing as stated on the datasheet
- Valid for 12 months from date of delivery
- Response to your inquiry within 24 hours
- We provide support in Chinese, English, French, German, Japanese and Spanish
- Extensive multi-media technical resources to help you
- We investigate all quality concerns to ensure our products perform to the highest standards

If the product does not perform as described on this datasheet, we will offer a refund or replacement. For full details of the Abpromise, please visit <https://www.abcam.com/abpromise> or contact our technical team.

Terms and conditions

- Guarantee only valid for products bought direct from Abcam or one of our authorized distributors