


Anti-GC-1 antibody ab137614

[4 References](#) [4 Images](#)

Overview

Product name	Anti-GC-1 antibody
Description	Rabbit polyclonal to GC-1
Host species	Rabbit
Tested applications	Suitable for: WB, IHC-P, ICC/IF
Species reactivity	Reacts with: Mouse, Human Predicted to work with: Cow 
Immunogen	Recombinant fragment corresponding to Human GC-1 aa 1-323.
Positive control	293T, A431, H1299, HeLa, HepG2, MOLT4, Raji cell lysates. Mouse brain; A431 cells; OVCAR3 xenograft tissue
General notes	<p>The Life Science industry has been in the grips of a reproducibility crisis for a number of years. Abcam is leading the way in addressing this with our range of recombinant monoclonal antibodies and knockout edited cell lines for gold-standard validation. Please check that this product meets your needs before purchasing.</p> <p>If you have any questions, special requirements or concerns, please send us an inquiry and/or contact our Support team ahead of purchase. Recommended alternatives for this product can be found below, along with publications, customer reviews and Q&As</p>

Properties

Form	Liquid
Storage instructions	Shipped at 4°C. Upon delivery aliquot. Store at -20°C or -80°C. Avoid freeze / thaw cycle.
Storage buffer	pH: 7.00 Preservative: 0.01% Thimerosal (merthiolate) Constituents: 1.21% Tris, 0.75% Glycine, 10% Glycerol (glycerin, glycerine)
Purity	Immunogen affinity purified
Clonality	Polyclonal
Isotype	IgG

Applications

The Abpromise guarantee

Our **Abpromise guarantee** covers the use of ab137614 in the following tested applications.

The application notes include recommended starting dilutions; optimal dilutions/concentrations should be determined by the end user.

Application	Abreviews	Notes
WB		1/1000 - 1/10000. Predicted molecular weight: 34 kDa.
IHC-P		1/100 - 1/1000. Perform heat mediated antigen retrieval with citrate buffer pH 6 before commencing with IHC staining protocol.
ICC/IF		1/100 - 1/1000.

Target

Function

Involved in the transport of glutamate across the inner mitochondrial membrane. Glutamate is cotransported with H(+).

Tissue specificity

Highly expressed in most tissues.

Involvement in disease

Defects in SLC25A22 are the cause of epileptic encephalopathy early infantile type 3 (EIEE3) [MIM:609304]; also known as early myoclonic encephalopathy (EME) or neonatal epilepsy with suppression-burst pattern. Severe neonatal epilepsies with suppression-burst pattern are early-onset epileptic syndromes characterized by a typical EEG pattern. The suppression-burst pattern of the EEG is characterized by higher-voltage bursts of slow waves mixed with multifocal spikes alternating with isoelectric suppression phases. EME is characterized by a very early onset, erratic and fragmentary myoclonus, massive myoclonus, partial motor seizures and late tonic spasms. The prognosis of EME is poor, with no effective treatment, and children with the condition either die within 1 to 2 years after birth or survive in a persistent vegetative state. EME inheritance is autosomal recessive.

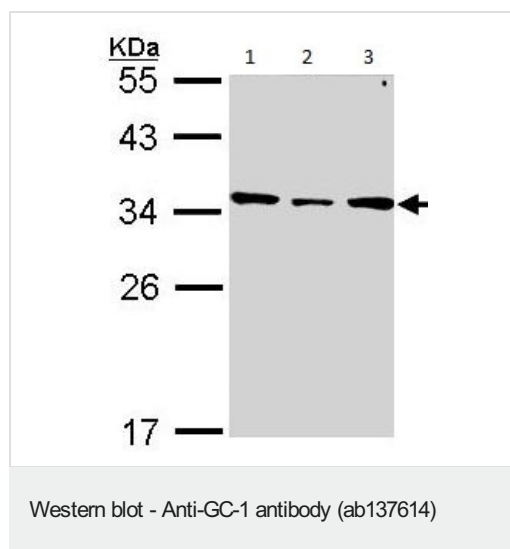
Sequence similarities

Belongs to the mitochondrial carrier family.
Contains 3 Solcar repeats.

Cellular localization

Mitochondrion inner membrane.

Images



All lanes : Anti-GC-1 antibody (ab137614) at 1/1000 dilution

Lane 1 : H1299 whole cell lysate

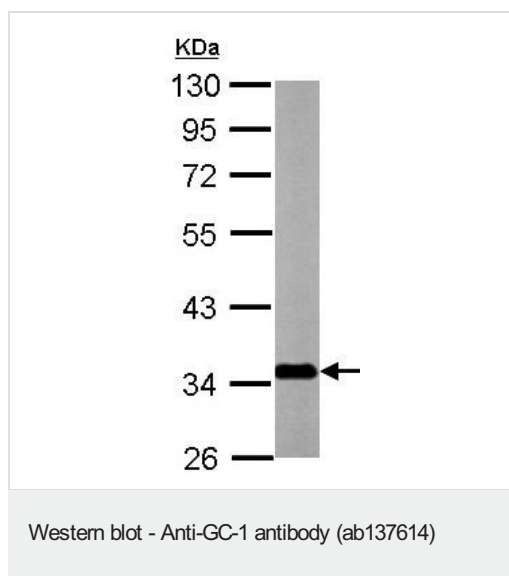
Lane 2 : HeLa whole cell lysate

Lane 3 : HepG2 whole cell lysate

Lysates/proteins at 30 µg per lane.

Predicted band size: 34 kDa

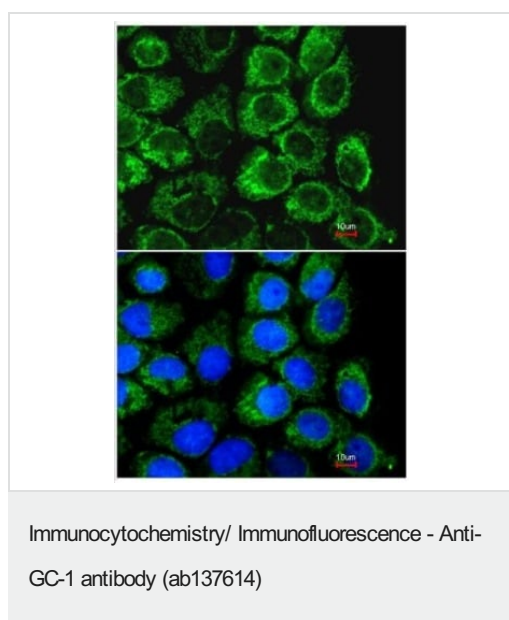
10% SDS PAGE



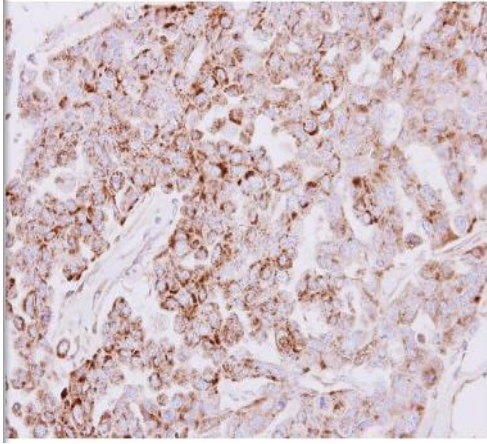
Anti-GC-1 antibody (ab137614) at 1/10000 dilution + Mouse brain whole cell lysate at 20 μ g

Predicted band size: 34 kDa

10% SDS PAGE



ab137614 at 1/200 dilution staining GC-1 in paraformaldehyde fixed A431 cells by Immunofluorescence. Lower image merged with DNA probe.



ab137614 at 1/500 dilution, staining GC-1 in paraffin embedded OVCAR3 xenograft tissue by Immunohistochemistry.

Immunohistochemistry (Formalin/PFA-fixed paraffin-embedded sections) - Anti-GC-1 antibody (ab137614)

Please note: All products are "FOR RESEARCH USE ONLY. NOT FOR USE IN DIAGNOSTIC PROCEDURES"

Our Abpromise to you: Quality guaranteed and expert technical support

- Replacement or refund for products not performing as stated on the datasheet
- Valid for 12 months from date of delivery
- Response to your inquiry within 24 hours
- We provide support in Chinese, English, French, German, Japanese and Spanish
- Extensive multi-media technical resources to help you
- We investigate all quality concerns to ensure our products perform to the highest standards

If the product does not perform as described on this datasheet, we will offer a refund or replacement. For full details of the Abpromise, please visit <https://www.abcam.com/abpromise> or contact our technical team.

Terms and conditions

- Guarantee only valid for products bought direct from Abcam or one of our authorized distributors