




## Product datasheet

### Anti-GC1q R antibody ab232712

7 Images

#### Overview

<b>Product name</b>	Anti-GC1q R antibody
<b>Description</b>	Rabbit polyclonal to GC1q R
<b>Host species</b>	Rabbit
<b>Tested applications</b>	<b>Suitable for:</b> ICC/IF, IHC-P, WB
<b>Species reactivity</b>	<b>Reacts with:</b> Human <b>Predicted to work with:</b> Mouse, Rat 
<b>Immunogen</b>	Recombinant fragment (His-tag) corresponding to Human GC1q R aa 50 to the C-terminus. (Expressed in E.coli). Database link: <a href="#">Q07021</a>  <a href="#">Run BLAST with</a>  <a href="#">Run BLAST with</a>
<b>Positive control</b>	IHC-P: Human lung cancer, prostate gland cancer, kidney and rectum cancer tissues. ICC/IF: HeLa cells. WB: K562 and HeLa whole cell lysate ( <a href="#">ab150035</a> ); Human liver lysate; Recombinant human GC1q R protein.
<b>General notes</b>	<p>The Life Science industry has been in the grips of a reproducibility crisis for a number of years. Abcam is leading the way in addressing this with our range of recombinant monoclonal antibodies and knockout edited cell lines for gold-standard validation. Please check that this product meets your needs before purchasing.</p> <p>If you have any questions, special requirements or concerns, please send us an inquiry and/or contact our Support team ahead of purchase. Recommended alternatives for this product can be found below, along with publications, customer reviews and Q&amp;As</p>

#### Properties

<b>Form</b>	Liquid
<b>Storage instructions</b>	Shipped at 4°C. Store at +4°C short term (1-2 weeks). Upon delivery aliquot. Store at -20°C long term. Avoid freeze / thaw cycle.
<b>Storage buffer</b>	pH: 7.40 Preservative: 0.011% Proclin 300 Constituents: 55.77% Glycerol (glycerin, glycerine), 44.219% PBS
<b>Purity</b>	Immunogen affinity purified
<b>Purification notes</b>	ab232712 was purified by antigen-specific affinity chromatography followed by Protein A affinity

	chromatography.
<b>Clonality</b>	Polyclonal
<b>Isotype</b>	IgG

## Applications

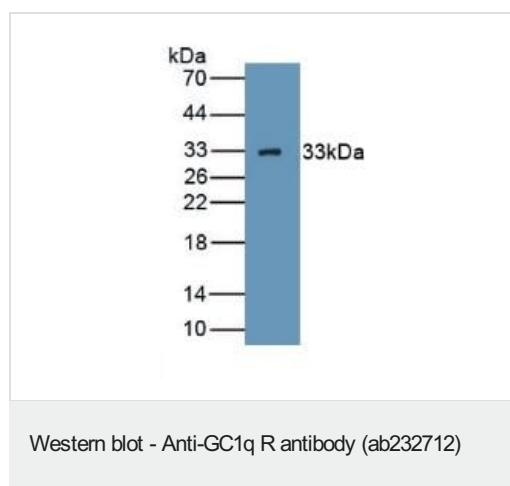
**The Abpromise guarantee** Our **Abpromise guarantee** covers the use of ab232712 in the following tested applications. The application notes include recommended starting dilutions; optimal dilutions/concentrations should be determined by the end user.

Application	Abreviews	Notes
ICC/IF		Use a concentration of 5 - 20 µg/ml.
IHC-P		Use a concentration of 5 - 20 µg/ml.
WB		Use a concentration of 0.5 - 5 µg/ml. Predicted molecular weight: 31 kDa.

## Target

<b>Function</b>	Binds to the globular "heads" of C1Q thus inhibiting C1 activation.
<b>Sequence similarities</b>	Belongs to the MAM33 family.
<b>Cellular localization</b>	Mitochondrion matrix. Nucleus. Might also be nuclear in some cell types.

## Images

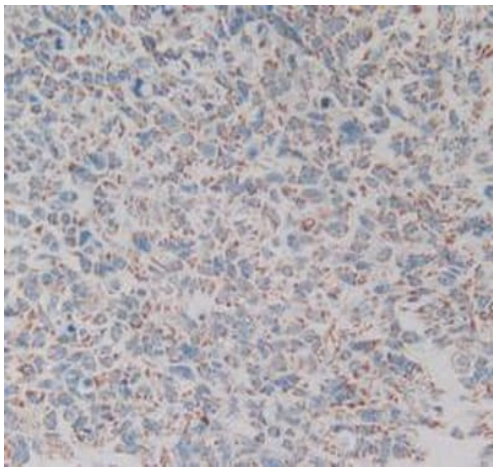


Anti-GC1q R antibody (ab232712) at 3 µg/ml + Recombinant human GC1q R protein

### Secondary

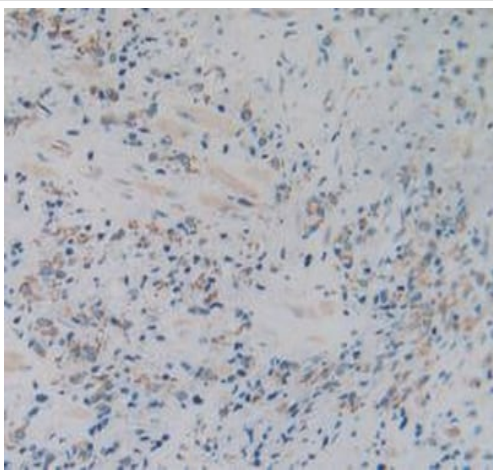
HRP-Linked Guinea pig Anti-Rabbit at 1/2000 dilution

**Predicted band size:** 31 kDa



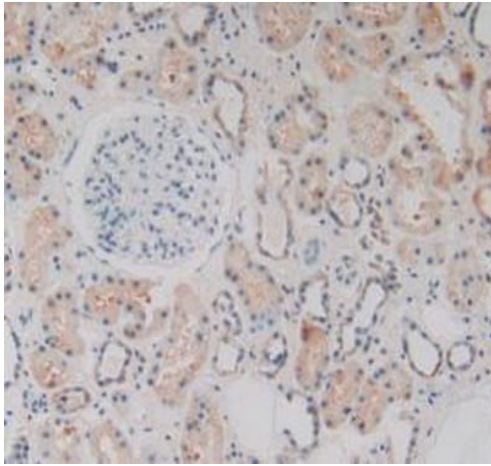
Paraffin-embedded human lung cancer tissue stained for GC1q R using ab232712 at 20 µg/ml in immunohistochemical analysis. DAB staining.

Immunohistochemistry (Formalin/PFA-fixed paraffin-embedded sections) - Anti-GC1q R antibody (ab232712)



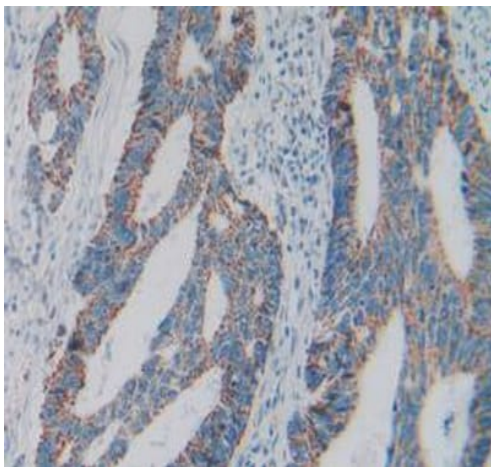
Paraffin-embedded human prostate gland cancer tissue stained for GC1q R using ab232712 at 20 µg/ml in immunohistochemical analysis. DAB staining.

Immunohistochemistry (Formalin/PFA-fixed paraffin-embedded sections) - Anti-GC1q R antibody (ab232712)



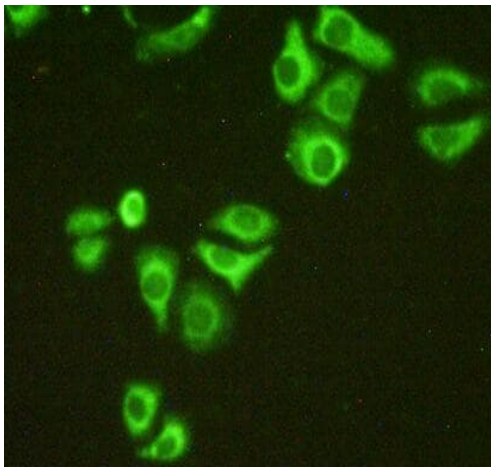
Immunohistochemistry (Formalin/PFA-fixed paraffin-embedded sections) - Anti-GC1q R antibody (ab232712)

Paraffin-embedded human kidney tissue stained for GC1q R using ab232712 at 20 µg/ml in immunohistochemical analysis. DAB staining.



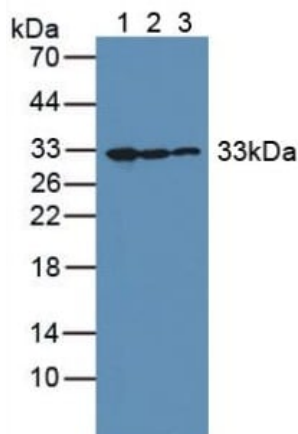
Immunohistochemistry (Formalin/PFA-fixed paraffin-embedded sections) - Anti-GC1q R antibody (ab232712)

Paraffin-embedded human rectum cancer tissue stained for GC1q R using ab232712 at 20 µg/ml in immunohistochemical analysis. DAB staining.



Immunocytochemistry/ Immunofluorescence - Anti-GC1q R antibody (ab232712)

HeLa (human epithelial cell line from cervix adenocarcinoma) cells stained for GC1q R (green) using ab232712 at 20 µg/ml in ICC/IF, followed FITC staining.



Western blot - Anti-GC1q R antibody (ab232712)

**All lanes :** Anti-GC1q R antibody (ab232712) at 3 µg/ml

**Lane 1 :** K562 (human chronic myelogenous leukemia cell line from bone marrow) cell lysate

**Lane 2 :** HeLa (epithelial cell line from cervix adenocarcinoma) cell lysate

**Lane 3 :** Human liver lysate

#### Secondary

**All lanes :** HRP-Linked Guinea pig Anti-Rabbit at 1/2000 dilution

**Predicted band size:** 31 kDa

**Please note:** All products are "FOR RESEARCH USE ONLY. NOT FOR USE IN DIAGNOSTIC PROCEDURES"

#### Our Abpromise to you: Quality guaranteed and expert technical support

- Replacement or refund for products not performing as stated on the datasheet
- Valid for 12 months from date of delivery
- Response to your inquiry within 24 hours
- We provide support in Chinese, English, French, German, Japanese and Spanish

- Extensive multi-media technical resources to help you
- We investigate all quality concerns to ensure our products perform to the highest standards

If the product does not perform as described on this datasheet, we will offer a refund or replacement. For full details of the Abpromise, please visit <https://www.abcam.com/abpromise> or contact our technical team.

#### **Terms and conditions**

---

- Guarantee only valid for products bought direct from Abcam or one of our authorized distributors