


Product datasheet

Anti-GCDH/GCD antibody [EPR14864(B)] ab182152

Recombinant RabMAb

4 Images

Overview

Product name	Anti-GCDH/GCD antibody [EPR14864(B)]
Description	Rabbit monoclonal [EPR14864(B)] to GCDH/GCD
Host species	Rabbit
Tested applications	Suitable for: WB, Flow Cyt (Intra)
Species reactivity	Reacts with: Human Predicted to work with: Mouse, Rat 
Immunogen	Synthetic peptide. This information is proprietary to Abcam and/or its suppliers.
Positive control	Human fetal liver and HepG2 cell lysates; PC3 cells.
General notes	This product is a recombinant monoclonal antibody, which offers several advantages including: <ul style="list-style-type: none"> - High batch-to-batch consistency and reproducibility - Improved sensitivity and specificity - Long-term security of supply - Animal-free production For more information see here . Our RabMAb [®] technology is a patented hybridoma-based technology for making rabbit monoclonal antibodies. For details on our patents, please refer to RabMAb[®] patents .

Properties

Form	Liquid
Storage instructions	Shipped at 4°C. Store at +4°C short term (1-2 weeks). Upon delivery aliquot. Store at -20°C long term. Avoid freeze / thaw cycle.
Storage buffer	pH: 7.2 Preservative: 0.01% Sodium azide Constituents: 40% Glycerol (glycerin, glycerine), 59% PBS, 0.05% BSA
Purity	Tissue culture supernatant
Clonality	Monoclonal
Clone number	EPR14864(B)
Isotype	IgG

Applications

The Abpromise guarantee

Our **Abpromise guarantee** covers the use of ab182152 in the following tested applications.

The application notes include recommended starting dilutions; optimal dilutions/concentrations should be determined by the end user.

Application	Abreviews	Notes
WB		1/1000 - 1/10000. Detects a band of approximately 48 kDa (predicted molecular weight: 48 kDa).
Flow Cyt (Intra)		1/80. ab172730 - Rabbit monoclonal IgG, is suitable for use as an isotype control with this antibody.

Target

Function

Catalyzes the oxidative decarboxylation of glutaryl-CoA to crotonyl-CoA and CO₂ in the degradative pathway of L-lysine, L-hydroxylysine, and L-tryptophan metabolism. It uses electron transfer flavoprotein as its electron acceptor. Isoform Short is inactive.

Tissue specificity

Isoform 1 and isoform 2 are expressed in fibroblasts and liver.

Pathway

Amino-acid metabolism; lysine degradation.
Amino-acid metabolism; tryptophan metabolism.

Involvement in disease

Defects in GCDH are the cause of glutaric aciduria type 1 (GA1) [MIM:231670]. GA1 is an autosomal recessive metabolic disorder characterized by progressive dystonia and athetosis due to gliosis and neuronal loss in the basal ganglia.

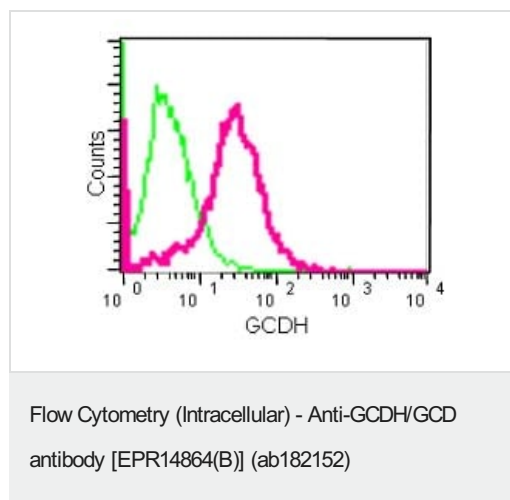
Sequence similarities

Belongs to the acyl-CoA dehydrogenase family.

Cellular localization

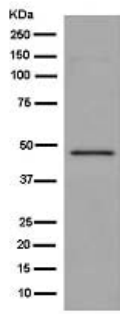
Mitochondrion matrix.

Images



Intracellular flow cytometric analysis of PC3 cells

(paraformaldehyde-fixed, 2%) labeling GCDH/GCD with ab182152 at 1/80 dilution (red) or a rabbit IgG (negative) (green), followed by Goat anti rabbit IgG (FITC) secondary at 1/150 dilution.



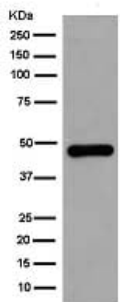
Western blot - Anti-GCDH/GCD antibody
[EPR14864(B)] (ab182152)

Anti-GCDH/GCD antibody [EPR14864(B)] (ab182152) at 1/5000 dilution + HepG2 cell lysate at 20 µg

Secondary

Goat Anti-Rabbit IgG, (H+L), Peroxidase conjugate at 1/1000 dilution

Predicted band size: 48 kDa



Western blot - Anti-GCDH/GCD antibody
[EPR14864(B)] (ab182152)


Anti-GCDH/GCD antibody [EPR14864(B)] (ab182152) at 1/20000 dilution + Human fetal liver lysate at 20 µg

Secondary

Goat Anti-Rabbit IgG, (H+L), Peroxidase conjugate at 1/1000 dilution

Predicted band size: 48 kDa

Why choose a recombinant antibody?

 Research with confidence Consistent and reproducible results	 Long-term and scalable supply Recombinant technology
 Success from the first experiment Confirmed specificity	 Ethical standards compliant Animal-free production

Anti-GCDH/GCD antibody [EPR14864(B)]
(ab182152)

Please note: All products are "FOR RESEARCH USE ONLY. NOT FOR USE IN DIAGNOSTIC PROCEDURES"

Our Abpromise to you: Quality guaranteed and expert technical support

- Replacement or refund for products not performing as stated on the datasheet
- Valid for 12 months from date of delivery
- Response to your inquiry within 24 hours

- We provide support in Chinese, English, French, German, Japanese and Spanish
- Extensive multi-media technical resources to help you
- We investigate all quality concerns to ensure our products perform to the highest standards

If the product does not perform as described on this datasheet, we will offer a refund or replacement. For full details of the Abpromise, please visit <https://www.abcam.com/abpromise> or contact our technical team.

Terms and conditions

- Guarantee only valid for products bought direct from Abcam or one of our authorized distributors