



Product datasheet

Anti-GCSF Receptor antibody [3G10G2] ab233833

[1 References](#) [3 Images](#)

Overview

Product name	Anti-GCSF Receptor antibody [3G10G2]
Description	Mouse monoclonal [3G10G2] to GCSF Receptor
Host species	Mouse
Tested applications	Suitable for: WB, Flow Cyt
Species reactivity	Reacts with: Human, Recombinant fragment
Immunogen	Recombinant fragment corresponding to Human GCSF Receptor aa 1-200 (extracellular). Expressed in E.coli. Database link: Q99062
	 Run BLAST with  Run BLAST with
Positive control	WB: Recombinant human GCSF Receptor (aa 25-187) protein; GCSF Receptor (aa 25-187)- hlgGfc-transfected HEK-293 cell lysate. Flow cyt: K562 cells.
General notes	<p>The Life Science industry has been in the grips of a reproducibility crisis for a number of years. Abcam is leading the way in addressing this with our range of recombinant monoclonal antibodies and knockout edited cell lines for gold-standard validation. Please check that this product meets your needs before purchasing.</p> <p>If you have any questions, special requirements or concerns, please send us an inquiry and/or contact our Support team ahead of purchase. Recommended alternatives for this product can be found below, along with publications, customer reviews and Q&As</p>

Properties

Form	Liquid
Storage instructions	Shipped at 4°C. Store at +4°C short term (1-2 weeks). Upon delivery aliquot. Store at -20°C long term. Avoid freeze / thaw cycle.
Storage buffer	Preservative: 0.05% Sodium azide Constituent: PBS
Purity	Protein G purified
Purification notes	Purified from tissue culture supernatant.
Clonality	Monoclonal
Clone number	3G10G2

Applications

The Abpromise guarantee

Our **Abpromise guarantee** covers the use of ab233833 in the following tested applications.

The application notes include recommended starting dilutions; optimal dilutions/concentrations should be determined by the end user.

Application	Abreviews	Notes
WB		1/500 - 1/2000.
Flow Cyt		1/200 - 1/400.

Target

Function

Receptor for granulocyte colony-stimulating factor (CSF3), essential for granulocytic maturation. Plays a crucial role in the proliferation, differentiation and survival of cells along the neutrophilic lineage. In addition it may function in some adhesion or recognition events at the cell surface.

Tissue specificity

One or several isoforms have been found in myelogenous leukemia cell line KG-1, leukemia U-937 cell line, in bone marrow cells, placenta, and peripheral blood granulocytes. Isoform GCSFR-2 is found only in leukemia U-937 cells. Isoform GCSFR-3 is highly expressed in placenta.

Involvement in disease

Hereditary neutrophilia

Sequence similarities

Belongs to the type I cytokine receptor family. Type 2 subfamily.
Contains 5 fibronectin type-III domains.
Contains 1 Ig-like C2-type (immunoglobulin-like) domain.

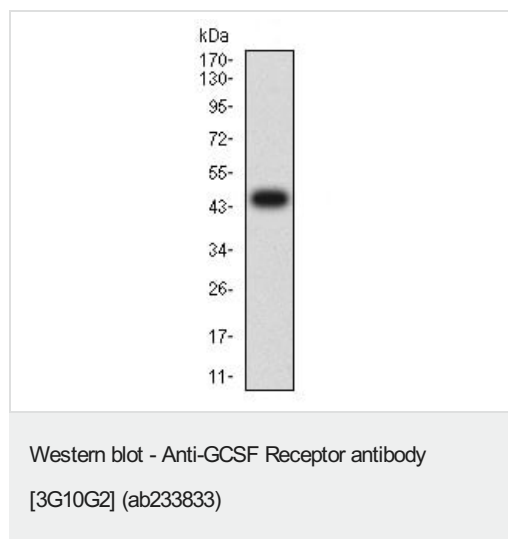
Domain

The WSXWS motif appears to be necessary for proper protein folding and thereby efficient intracellular transport and cell-surface receptor binding.
The box 1 motif is required for JAK interaction and/or activation.

Cellular localization

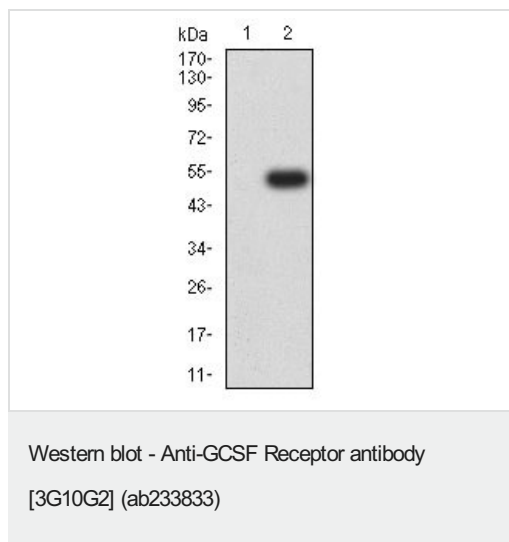
Secreted and Cell membrane.

Images



Anti-GCSF Receptor antibody [3G10G2] (ab233833) at 1/100
dilution + Recombinant human GCSF Receptor (aa 25-187) protein

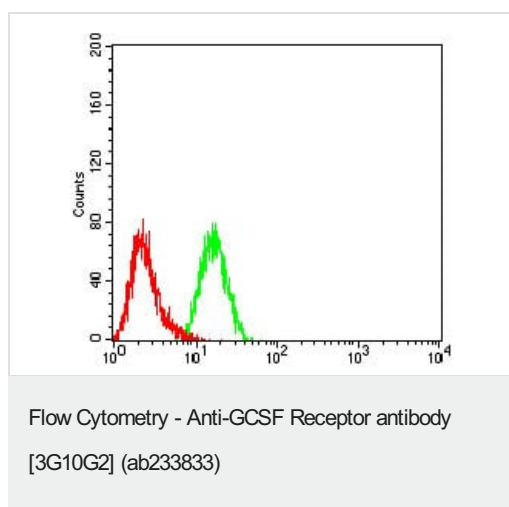
Expected recombinant MW is 47 kDa.



All lanes : Anti-GCSF Receptor antibody [3G10G2] (ab233833) at 1/100 dilution

Lane 1 : Untransfected HEK-293 (human epithelial cell line from embryonic kidney) cell lysate

Lane 2 : GCSF Receptor (aa 25-187)-hlgGfc-transfected HEK-293 cell lysate



Flow cytometric analysis of K562 (human chronic myelogenous leukemia cell line from bone marrow) cells labeling GCSF Receptor with ab233833 at 1/200 dilution (green) compared to a negative control (red).

Please note: All products are "FOR RESEARCH USE ONLY. NOT FOR USE IN DIAGNOSTIC PROCEDURES"

Our Abpromise to you: Quality guaranteed and expert technical support

- Replacement or refund for products not performing as stated on the datasheet
- Valid for 12 months from date of delivery
- Response to your inquiry within 24 hours
- We provide support in Chinese, English, French, German, Japanese and Spanish
- Extensive multi-media technical resources to help you
- We investigate all quality concerns to ensure our products perform to the highest standards

If the product does not perform as described on this datasheet, we will offer a refund or replacement. For full details of the Abpromise, please visit <https://www.abcam.com/abpromise> or contact our technical team.

Terms and conditions

- Guarantee only valid for products bought direct from Abcam or one of our authorized distributors