


Product datasheet

Anti-GDF15 antibody [23G10.F8] α b105732

[1 Image](#)

Overview

Product name	Anti-GDF15 antibody [23G10.F8]
Description	Mouse monoclonal [23G10.F8] to GDF15
Host species	Mouse
Specificity	ab105732 specifically reacts with the amino terminal end of GDF15 protein from tissues. Multimeric forms of GDF15 may be detected.
Tested applications	Suitable for: WB
Species reactivity	Reacts with: Human Predicted to work with: Chimpanzee, Macaque monkey 
Immunogen	Synthetic peptide corresponding to a region near the amino terminal end of Human GDF15. A residue of cysteine was added to facilitate coupling to KLH.
Positive control	Yeast cell lysate expressing GDF15 H variant with SUMO expression tag; yeast cell lysate expressing GDF15 D variant with SUMO expression tag; yeast cell lysate expressing GDF15 H variant; yeast cell lysate expressing GDF15 D variant
General notes	<p>The Life Science industry has been in the grips of a reproducibility crisis for a number of years. Abcam is leading the way in addressing this with our range of recombinant monoclonal antibodies and knockout edited cell lines for gold-standard validation. Please check that this product meets your needs before purchasing.</p> <p>If you have any questions, special requirements or concerns, please send us an inquiry and/or contact our Support team ahead of purchase. Recommended alternatives for this product can be found below, along with publications, customer reviews and Q&As</p>

Properties

Form	Liquid
Storage instructions	Shipped at 4°C. Store at +4°C short term (1-2 weeks). Store at -20°C long term. Avoid freeze / thaw cycle. Diluted stock solutions should be used immediately and not be frozen. Store undiluted.
Storage buffer	Preservative: 0.01% Sodium azide Constituents: 0.42% Potassium phosphate, 0.88% Sodium chloride
Purity	Protein A purified
Purification notes	Purified from concentrated tissue culture supernatant.

Clonality	Monoclonal
Clone number	23G10.F8
Isotype	IgG1

Applications

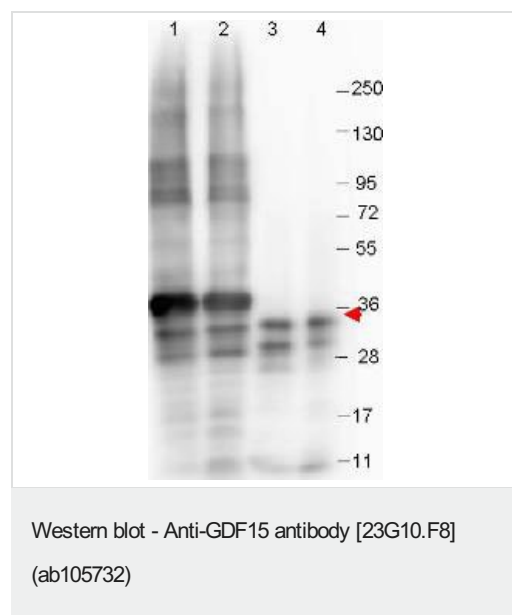
The Abpromise guarantee Our **Abpromise guarantee** covers the use of ab105732 in the following tested applications. The application notes include recommended starting dilutions; optimal dilutions/concentrations should be determined by the end user.

Application	Abreviews	Notes
WB		1/1000. Predicted molecular weight: 34 kDa.

Target

Tissue specificity	Highly expressed in placenta, with lower levels in prostate and colon and some expression in kidney.
Sequence similarities	Belongs to the TGF-beta family.
Cellular localization	Secreted.

Images



All lanes : Anti-GDF15 antibody [23G10.F8] (ab105732) at 1/1000 dilution

Lane 1 : Yeast cell lysate expressing GDF15 H variant with SUMO expression tag at 36 kDa

Lane 2 : Yeast cell lysate expressing GDF15 D variant with SUMO expression tag at 36 kDa

Lane 3 : Yeast cell lysate expressing GDF15 H variant

Lane 4 : Yeast cell lysate expressing GDF15 D variant

Predicted band size: 34 kDa

Please note: All products are "FOR RESEARCH USE ONLY. NOT FOR USE IN DIAGNOSTIC PROCEDURES"

Our Abpromise to you: Quality guaranteed and expert technical support

- Replacement or refund for products not performing as stated on the datasheet

- Valid for 12 months from date of delivery
- Response to your inquiry within 24 hours
- We provide support in Chinese, English, French, German, Japanese and Spanish
- Extensive multi-media technical resources to help you
- We investigate all quality concerns to ensure our products perform to the highest standards

If the product does not perform as described on this datasheet, we will offer a refund or replacement. For full details of the Abpromise, please visit <https://www.abcam.com/abpromise> or contact our technical team.

Terms and conditions

- Guarantee only valid for products bought direct from Abcam or one of our authorized distributors