


### Anti-GDF15 antibody [6D12.H10.E4] ab189358

★★★★★ [1 Abreviews](#) [6 References](#) [1 Image](#)

#### Overview

|                            |   |
|----------------------------|---|
| <b>Product name</b>        | Anti-GDF15 antibody [6D12.H10.E4]   |
| <b>Description</b>         | Rat monoclonal [6D12.H10.E4] to GDF15   |
| <b>Host species</b>        | Rat   |
| <b>Tested applications</b> | <b>Suitable for:</b> IHC-P  |
| <b>Species reactivity</b>  | <b>Reacts with:</b> Human<br><b>Predicted to work with:</b> Rat, Chimpanzee   |
| <b>Immunogen</b>           | Recombinant full length protein (MBP-tag) corresponding to Mouse GDF15 aa 1-303. Cross reactivity to MBP was removed via cross-adsorption chromatography.<br>Database link: <a href="#">Q9Z0J7</a>  |
| <b>Positive control</b>    | Human placenta tissue.  |
| <b>General notes</b>       | <p>The Life Science industry has been in the grips of a reproducibility crisis for a number of years. Abcam is leading the way in addressing this with our range of recombinant monoclonal antibodies and knockout edited cell lines for gold-standard validation. Please check that this product meets your needs before purchasing.</p> <p>If you have any questions, special requirements or concerns, please send us an inquiry and/or contact our Support team ahead of purchase. Recommended alternatives for this product can be found below, along with publications, customer reviews and Q&amp;As</p> |

#### Properties

|                             |   |
|-----------------------------|---|
| <b>Form</b>                 | Liquid  |
| <b>Storage instructions</b> | Shipped at 4°C. Store at +4°C short term (1-2 weeks). Upon delivery aliquot. Store at -20°C long term. Avoid freeze / thaw cycle. |
| <b>Storage buffer</b>       | pH: 7.20<br>Preservative: 0.01% Sodium azide<br>Constituents: 0.87% Sodium chloride, 0.424% Potassium phosphate                   |
|                             | Sterile filtered  |
| <b>Purity</b>               | Protein G purified  |
| <b>Purification notes</b>   | Cross reactivity to MBP was removed via cross-adsorption chromatography.  |
| <b>Clonality</b>            | Monoclonal  |

**Clone number** 6D12.H10.E4  
**Isotype** IgG

## Applications

**The Abpromise guarantee** Our **Abpromise guarantee** covers the use of ab189358 in the following tested applications. The application notes include recommended starting dilutions; optimal dilutions/concentrations should be determined by the end user.

| Application | Abreviews | Notes  |
|-------------|-----------|--|
| IHC-P       |           | Use a concentration of 10 µg/ml. Perform heat mediated antigen retrieval before commencing with IHC staining protocol. |

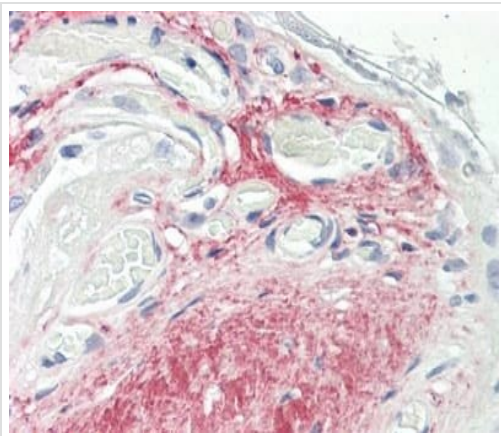
## Target

**Tissue specificity** Highly expressed in placenta, with lower levels in prostate and colon and some expression in kidney.

**Sequence similarities** Belongs to the TGF-beta family.

**Cellular localization** Secreted.

## Images



Immunohistochemical analysis of formalin-fixed, paraffin-embedded Human placenta tissue labeling GDF15 with ab189358 at 10 µg/ml.

Immunohistochemistry (Formalin/PFA-fixed paraffin-embedded sections) - Anti-GDF15 antibody  
[6D12.H10.E4] (ab189358)

**Please note:** All products are "FOR RESEARCH USE ONLY. NOT FOR USE IN DIAGNOSTIC PROCEDURES"

## Our Abpromise to you: Quality guaranteed and expert technical support

- Replacement or refund for products not performing as stated on the datasheet

- Valid for 12 months from date of delivery
- Response to your inquiry within 24 hours
- We provide support in Chinese, English, French, German, Japanese and Spanish
- Extensive multi-media technical resources to help you
- We investigate all quality concerns to ensure our products perform to the highest standards

If the product does not perform as described on this datasheet, we will offer a refund or replacement. For full details of the Abpromise, please visit <https://www.abcam.com/abpromise> or contact our technical team.

#### **Terms and conditions**

---

- Guarantee only valid for products bought direct from Abcam or one of our authorized distributors