


Anti-GDF15 antibody ab105738

[2 References](#) [1 Image](#)

Overview

Product name	Anti-GDF15 antibody
Description	Rabbit polyclonal to GDF15
Host species	Rabbit
Specificity	A BLAST analysis suggests reactivity with NAG-1 from rat based on 100% homology. Partial reactivity is expected against swine, bovine and dog based on 92% homology. Cross-reactivity with NAG-1 from other sources has not been determined.
Tested applications	Suitable for: WB
Species reactivity	Reacts with: Mouse, Human Predicted to work with: Rat, Cow, Dog, Pig 
Immunogen	Synthetic peptide corresponding to amino acids near the C-terminal of Mouse GDF15.
General notes	<p>Expiration date is one (1) year from date of opening product.</p> <p>The Life Science industry has been in the grips of a reproducibility crisis for a number of years. Abcam is leading the way in addressing this with our range of recombinant monoclonal antibodies and knockout edited cell lines for gold-standard validation. Please check that this product meets your needs before purchasing.</p> <p>If you have any questions, special requirements or concerns, please send us an inquiry and/or contact our Support team ahead of purchase. Recommended alternatives for this product can be found below, along with publications, customer reviews and Q&As</p>

Properties

Form	Liquid
Storage instructions	Shipped at 4°C. Store at +4°C short term (1-2 weeks). Upon delivery aliquot. Store at -20°C or -80°C. Avoid freeze / thaw cycle.
Storage buffer	Preservative: 0.01% Sodium azide Constituents: 0.42% Potassium phosphate, 0.88% Sodium chloride
Purity	Affinity purified
Purification notes	This product was affinity purified from monospecific antiserum by immunoaffinity chromatography.
Clonality	Polyclonal
Isotype	IgG

Applications

The Abpromise guarantee

Our **Abpromise guarantee** covers the use of ab105738 in the following tested applications.

The application notes include recommended starting dilutions; optimal dilutions/concentrations should be determined by the end user.

Application	Abreviews	Notes
WB		1/3000 - 1/7000. Predicted molecular weight: 33 kDa.

Target

Tissue specificity

Highly expressed in placenta, with lower levels in prostate and colon and some expression in kidney.

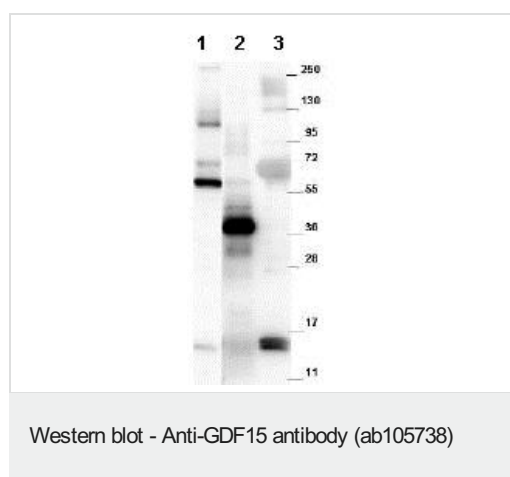
Sequence similarities

Belongs to the TGF-beta family.

Cellular localization

Secreted.

Images



All lanes : Anti-GDF15 antibody (ab105738) at 1/1000 dilution

Lane 1 : Recombinant MBP-GDF15 fusion protein purified from E.coli

Lane 2 : Yeast cell lysate expressing SUMO-Mouse GDF15

Lane 3 : Human GDF15 monomer purified from CHO-K1 cells

Secondary

All lanes : Goat-anti-Rabbit HRP at 1/40000 dilution

Performed under reducing conditions.

Predicted band size: 33 kDa

Expect bands in Western blots of approximately 14 and 28 kDa in size corresponding to GDF15 monomer and dimer, respectively.

Please note: All products are "FOR RESEARCH USE ONLY. NOT FOR USE IN DIAGNOSTIC PROCEDURES"

Our Abpromise to you: Quality guaranteed and expert technical support

- Replacement or refund for products not performing as stated on the datasheet

- Valid for 12 months from date of delivery
- Response to your inquiry within 24 hours

- We provide support in Chinese, English, French, German, Japanese and Spanish
- Extensive multi-media technical resources to help you
- We investigate all quality concerns to ensure our products perform to the highest standards

If the product does not perform as described on this datasheet, we will offer a refund or replacement. For full details of the Abpromise, please visit <https://www.abcam.com/abpromise> or contact our technical team.

Terms and conditions

- Guarantee only valid for products bought direct from Abcam or one of our authorized distributors