


Product datasheet

Anti-GDF15 antibody ab106006

★★★★★ [1 Abreviews](#) [2 References](#) [1 Image](#)

Overview

Product name	Anti-GDF15 antibody
Description	Rabbit polyclonal to GDF15
Host species	Rabbit
Tested applications	Suitable for: WB
Species reactivity	Reacts with: Human Predicted to work with: Rat, Chimpanzee, Macaque monkey 
Immunogen	Synthetic peptide corresponding to a region near the carboxy terminal end of Human GDF15 protein. A residue of cysteine was added to facilitate coupling to KLH.
Positive control	GDF15 purified from CHO cells
General notes	Dilute only prior to immediate use. Expiration date is one (1) year from date of opening product. The Life Science industry has been in the grips of a reproducibility crisis for a number of years. Abcam is leading the way in addressing this with our range of recombinant monoclonal antibodies and knockout edited cell lines for gold-standard validation. Please check that this product meets your needs before purchasing. If you have any questions, special requirements or concerns, please send us an inquiry and/or contact our Support team ahead of purchase. Recommended alternatives for this product can be found below, along with publications, customer reviews and Q&As

Properties

Form	Liquid
Storage instructions	Shipped at 4°C. Store at +4°C short term (1-2 weeks). Upon delivery aliquot. Store at -20°C or -80°C. Avoid freeze / thaw cycle.
Storage buffer	Preservative: 0.01% Sodium azide Constituents: 0.88% Sodium chloride, 0.42% Potassium phosphate
Purity	Immunogen affinity purified
Purification notes	ab106006 was affinity purified from monospecific antiserum.
Clonality	Polyclonal
Isotype	IgG

Applications

The Abpromise guarantee

Our **Abpromise guarantee** covers the use of ab106006 in the following tested applications.

The application notes include recommended starting dilutions; optimal dilutions/concentrations should be determined by the end user.

Application	Abreviews	Notes
WB	★★★★★ (1)	1/2000 - 1/10000. Predicted molecular weight: 34 kDa.

Target

Tissue specificity

Highly expressed in placenta, with lower levels in prostate and colon and some expression in kidney.

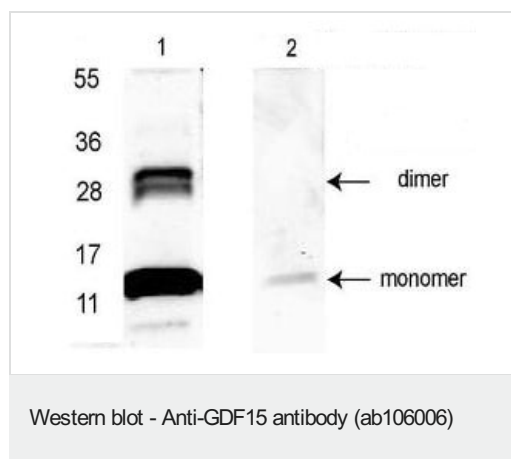
Sequence similarities

Belongs to the TGF-beta family.

Cellular localization

Secreted.

Images



All lanes : Anti-GDF15 antibody (ab106006) at 1/2000 dilution

Lane 1 : GDF15 purified from CHO cells

Lane 2 : GDF15 purified from CHO cells, with immunizing peptide

Performed under reducing conditions.

Predicted band size: 34 kDa

A 14 kDa band corresponding to a GDF15 monomer and a 28 kDa band corresponding to dimerized GDF15 are indicated by arrowheads.

Lane 1 shows GDF15 detection, whereas lane 2 shows reactivity is blocked when ab106006 is pre-incubated with the immunizing peptide prior to Western blotting.

Please note: All products are "FOR RESEARCH USE ONLY. NOT FOR USE IN DIAGNOSTIC PROCEDURES"

Our Abpromise to you: Quality guaranteed and expert technical support

- Replacement or refund for products not performing as stated on the datasheet
- Valid for 12 months from date of delivery

- Response to your inquiry within 24 hours
- We provide support in Chinese, English, French, German, Japanese and Spanish
- Extensive multi-media technical resources to help you
- We investigate all quality concerns to ensure our products perform to the highest standards

If the product does not perform as described on this datasheet, we will offer a refund or replacement. For full details of the Abpromise, please visit <https://www.abcam.com/abpromise> or contact our technical team.

Terms and conditions

- Guarantee only valid for products bought direct from Abcam or one of our authorized distributors