

## Product datasheet

### Anti-GDF15 antibody ab211364

[1 References](#) [6 Images](#)

#### Overview

---

<b>Product name</b>	Anti-GDF15 antibody
<b>Description</b>	Rabbit polyclonal to GDF15
<b>Host species</b>	Rabbit
<b>Tested applications</b>	<b>Suitable for:</b> ICC/IF, WB, IHC-P
<b>Species reactivity</b>	<b>Reacts with:</b> Human
<b>Immunogen</b>	Recombinant fragment corresponding to Human GDF15 aa 1-200. Database link: <a href="#">Q99988</a> <a href="#">Run BLAST with</a> <a href="#">Run BLAST with</a>
<b>Positive control</b>	IHC-P: Human placenta and prostate tissue; WB: Human cell line BEWO;; ICC: Hep G2 whole cells.
<b>General notes</b>	<p>The Life Science industry has been in the grips of a reproducibility crisis for a number of years. Abcam is leading the way in addressing this with our range of recombinant monoclonal antibodies and knockout edited cell lines for gold-standard validation. Please check that this product meets your needs before purchasing.</p> <p>If you have any questions, special requirements or concerns, please send us an inquiry and/or contact our Support team ahead of purchase. Recommended alternatives for this product can be found below, along with publications, customer reviews and Q&amp;As</p>

#### Properties

---

<b>Form</b>	Liquid
<b>Storage instructions</b>	Shipped at 4°C. Store at +4°C short term (1-2 weeks). Upon delivery aliquot. Store at -20°C long term. Avoid freeze / thaw cycle.
<b>Storage buffer</b>	pH: 7.20 Preservative: 0.02% Sodium azide Constituents: 40% Glycerol (glycerin, glycerine), 59% PBS
<b>Purity</b>	Immunogen affinity purified
<b>Clonality</b>	Polyclonal
<b>Isotype</b>	IgG

## Applications

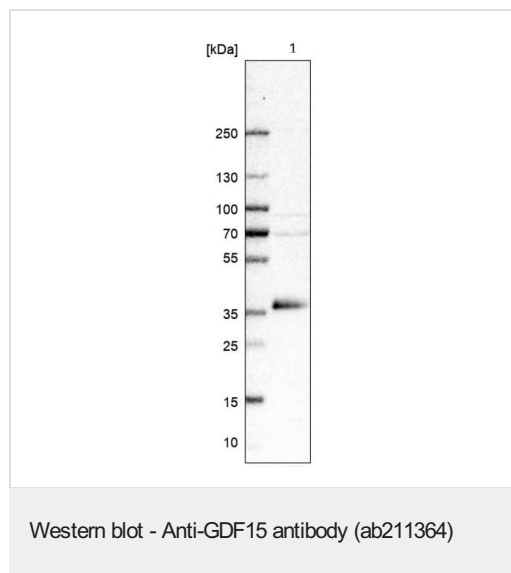
**The Abpromise guarantee** Our **Abpromise guarantee** covers the use of ab211364 in the following tested applications. The application notes include recommended starting dilutions; optimal dilutions/concentrations should be determined by the end user.

Application	Abreviews	Notes
ICC/IF		Use a concentration of 0.25 - 2 µg/ml. Fixation/Permeabilization: PFA/Triton X-100
WB		Use a concentration of 0.04 - 0.4 µg/ml. Predicted molecular weight: 34 kDa.
IHC-P		1/50 - 1/200. Perform heat mediated antigen retrieval with citrate buffer pH 6 before commencing with IHC staining protocol.

## Target

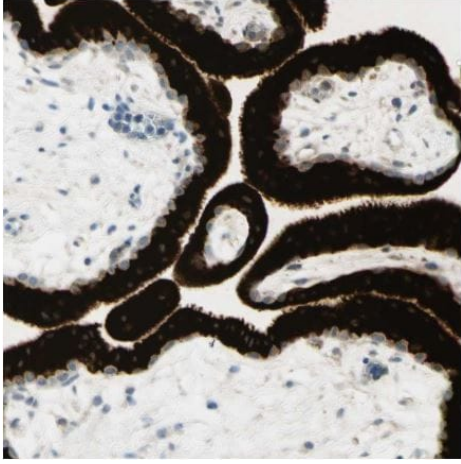
<b>Tissue specificity</b>	Highly expressed in placenta, with lower levels in prostate and colon and some expression in kidney.
<b>Sequence similarities</b>	Belongs to the TGF-beta family.
<b>Cellular localization</b>	Secreted.

## Images



Anti-GDF15 antibody (ab211364) + Human cell line BEWO

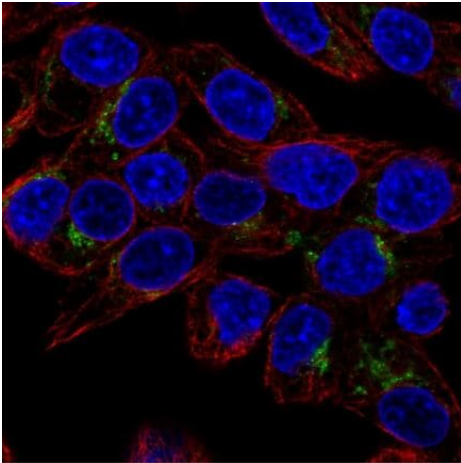
**Predicted band size: 34 kDa**



Immunohistochemistry (Formalin/PFA-fixed paraffin-embedded sections) - Anti-GDF15 antibody (ab211364)

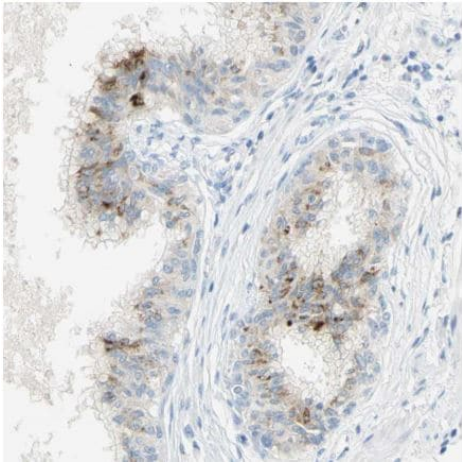
Immunohistochemical analysis of human placenta tissue labeling GDF15 in the cytoplasm of trophoblastic cells with ab211364 at a 1/50 dilution.

Performed heat mediated antigen retrieval with citrate buffer pH 6 before commencing with IHC staining protocol.



Immunocytochemistry/ Immunofluorescence - Anti-GDF15 antibody (ab211364)

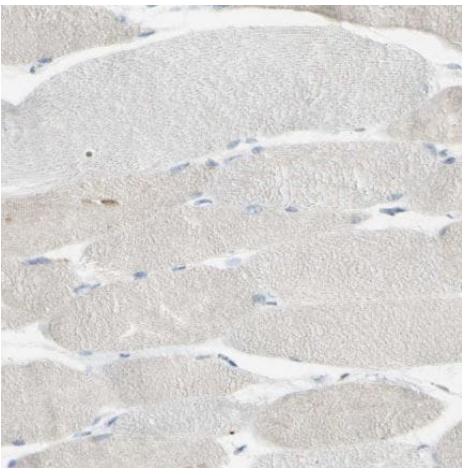
Immunocytochemical analysis of HepG2 (Human liver hepatocellular carcinoma cell line) whole cells labeling GDF15 in the Golgi apparatus with ab211364 at 2  $\mu\text{g/ml}$ .



Immunohistochemical analysis of human prostate tissue labeling GDF15 in the cytoplasm in a small subset of glandular cells with ab211364 at a 1/50 dilution.

Performed heat mediated antigen retrieval with citrate buffer pH 6 before commencing with IHC staining protocol.

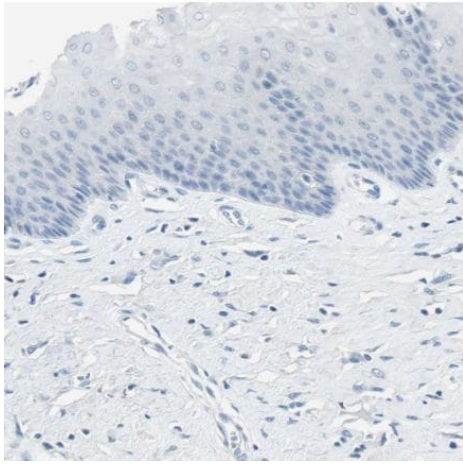
Immunohistochemistry (Formalin/PFA-fixed paraffin-embedded sections) - Anti-GDF15 antibody (ab211364)



Immunohistochemical analysis of human skeletal muscle tissue labeling GDF15 with ab211364 at a 1/50 dilution. No positivity as expected.

Performed heat mediated antigen retrieval with citrate buffer pH 6 before commencing with IHC staining protocol.

Immunohistochemistry (Formalin/PFA-fixed paraffin-embedded sections) - Anti-GDF15 antibody (ab211364)



Immunohistochemistry (Formalin/PFA-fixed paraffin-embedded sections) - Anti-GDF15 antibody (ab211364)

Immunohistochemical analysis of human cervix tissue labeling GDF15 with ab211364 at a 1/50 dilution. No positivity as expected.

Performed heat mediated antigen retrieval with citrate buffer pH 6 before commencing with IHC staining protocol.

**Please note:** All products are "FOR RESEARCH USE ONLY. NOT FOR USE IN DIAGNOSTIC PROCEDURES"

### **Our Abpromise to you: Quality guaranteed and expert technical support**

---

- Replacement or refund for products not performing as stated on the datasheet
- Valid for 12 months from date of delivery
- Response to your inquiry within 24 hours
- We provide support in Chinese, English, French, German, Japanese and Spanish
- Extensive multi-media technical resources to help you
- We investigate all quality concerns to ensure our products perform to the highest standards

If the product does not perform as described on this datasheet, we will offer a refund or replacement. For full details of the Abpromise, please visit <https://www.abcam.com/abpromise> or contact our technical team.

### **Terms and conditions**

---

- Guarantee only valid for products bought direct from Abcam or one of our authorized distributors