

Product datasheet

Anti-GDF15 antibody [EPR19939] ab206414

Recombinant RabMAb

[7 References](#) [9 Images](#)

Overview

| | |
|----------------------------|---|
| Product name | Anti-GDF15 antibody [EPR19939] |
| Description | Rabbit monoclonal [EPR19939] to GDF15 |
| Host species | Rabbit |
| Tested applications | Suitable for: IHC-P, WB, IP, ELISA |
| Species reactivity | Reacts with: Human |
| Immunogen | Recombinant fragment. This information is proprietary to Abcam and/or its suppliers. |
| Positive control | WB: HepG2 and LNCaP whole cell lysates; human prostate cancer and placenta lysates; untreated HT1080 and treated with 200ng/ml Phorbol-12-myristate-13-acetate (TPA) for 24 hours whole cell lysates. IHC-P: Human placenta and prostate hyperplasia tissues. IP: HepG2 whole cell lysate. |
| General notes | <p>This product is a recombinant monoclonal antibody, which offers several advantages including:</p> <ul style="list-style-type: none"> - High batch-to-batch consistency and reproducibility - Improved sensitivity and specificity - Long-term security of supply - Animal-free production <p>For more information see here.</p> <p>Our RabMAb[®] technology is a patented hybridoma-based technology for making rabbit monoclonal antibodies. For details on our patents, please refer to RabMAb[®] patents.</p> |

Properties

| | |
|-----------------------------|---|
| Form | Liquid |
| Storage instructions | Shipped at 4°C. Store at +4°C short term (1-2 weeks). Upon delivery aliquot. Store at -20°C long term. Avoid freeze / thaw cycle. |
| Storage buffer | <p>pH: 7.2</p> <p>Preservative: 0.01% Sodium azide</p> <p>Constituents: 59% PBS, 40% Glycerol, 0.05% BSA</p> |
| Purity | Protein A purified |
| Clonality | Monoclonal |
| Clone number | EPR19939 |

Isotype

IgG

Applications

The Abpromise guarantee

Our **Abpromise guarantee** covers the use of ab206414 in the following tested applications.

The application notes include recommended starting dilutions; optimal dilutions/concentrations should be determined by the end user.

| Application | Abreviews | Notes |
|-------------|-----------|---|
| IHC-P | | 1/100. Perform heat mediated antigen retrieval with Tris/EDTA buffer pH 9.0 before commencing with IHC staining protocol. IHC tests show positive staining only on human placenta and prostate hyperplasia tissues, other tissues tested were negative. |
| WB | | 1/1000. Detects a band of approximately 35, 12.5 kDa (predicted molecular weight: 34 kDa). |
| IP | | 1/30. |
| ELISA | | Use at an assay dependent concentration. |

Target

Tissue specificity

Highly expressed in placenta, with lower levels in prostate and colon and some expression in kidney.

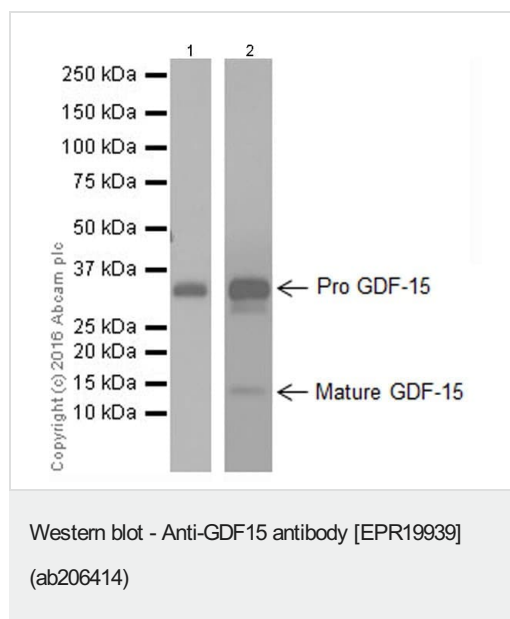
Sequence similarities

Belongs to the TGF-beta family.

Cellular localization

Secreted.

Images



All lanes : Anti-GDF15 antibody [EPR19939] (ab206414) at 1/1000 dilution

Lane 1 : HepG2 (Human liver hepatocellular carcinoma cell line) whole cell lysate

Lane 2 : LNCaP (Human prostate cancer cell line) whole cell lysate

Lysates/proteins at 20 µg per lane.

Secondary

All lanes : Goat Anti-Rabbit IgG Peroxidase Conjugate, specific to the non-reduced form of IgG at 1/10000 dilution

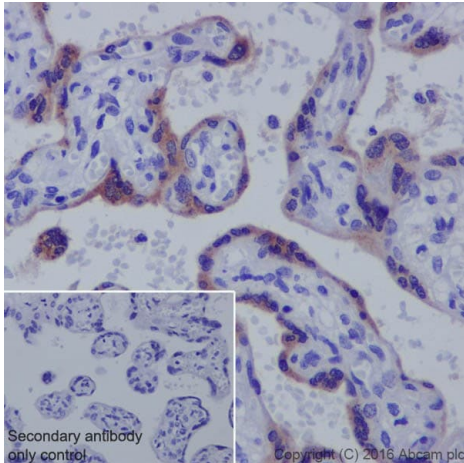
Predicted band size: 34 kDa

Observed band size: 12.5, 35 kDa

Blocking/Dilution buffer: 5% NFDM/TBST.

Exposure time: Lane 1: 3 minutes; Lane 2: 10 seconds.

The molecular weight observed is consistent with the literature (PMID: 20884666).



Immunohistochemistry (Formalin/PFA-fixed paraffin-embedded sections) - Anti-GDF15 antibody [EPR19939] (ab206414)

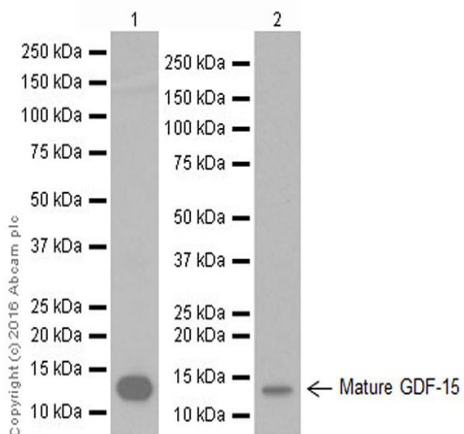
Immunohistochemical analysis of paraffin-embedded human placenta tissue labeling GDF15 with ab206414 at 1/100 dilution, followed by Goat Anti-Rabbit IgG H&L (HRP) ([ab97051](#)) at 1/500 dilution.

Cytoplasmic staining on human placenta is observed (PMID: 9593718). Positive staining on human placenta and prostate hyperplasia, other tissues tested were negative.

Counter stained with Hematoxylin.

Secondary antibody only control: Used PBS instead of primary antibody, secondary antibody is Goat Anti-Rabbit IgG H&L (HRP) ([ab97051](#)) at 1/500 dilution.

Perform heat mediated antigen retrieval with Tris/EDTA buffer pH 9.0 before commencing with IHC staining protocol.



Western blot - Anti-GDF15 antibody [EPR19939] (ab206414)

All lanes : Anti-GDF15 antibody [EPR19939] (ab206414) at 1/1000 dilution

Lane 1 : Human prostate cancer lysate

Lane 2 : Human placenta lysate

Lysates/proteins at 10 µg per lane.

Secondary

All lanes : Goat Anti-Rabbit IgG Peroxidase Conjugate, specific to the non-reduced form of IgG at 1/10000 dilution

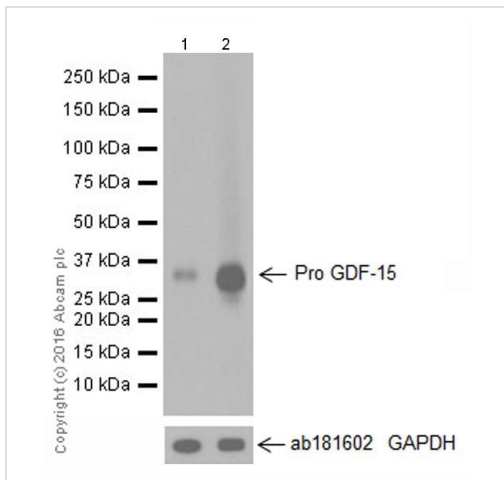
Predicted band size: 34 kDa

Observed band size: 12.5 kDa

Blocking/Dilution buffer: 5% NFDM/TBST.

Exposure time: Lane 1: 10 seconds; Lane 2: 3 minutes.

The molecular weight observed is consistent with the literature (PMID: 20884666).



Western blot - Anti-GDF15 antibody [EPR19939] (ab206414)

All lanes : Anti-GDF15 antibody [EPR19939] (ab206414) at 1/1000 dilution

Lane 1 : Untreated HT1080 (Human fibrosarcoma cell line) whole cell lysate

Lane 2 : HT1080 (Human fibrosarcoma cell line) whole cell lysate treated with 200ng/ml Phorbol-12-myristate-13-acetate (TPA) for 24 hours

Lysates/proteins at 10 µg per lane.

Secondary

All lanes : Goat Anti-Rabbit IgG H&L (HRP) (**ab97051**) at 1/100000 dilution

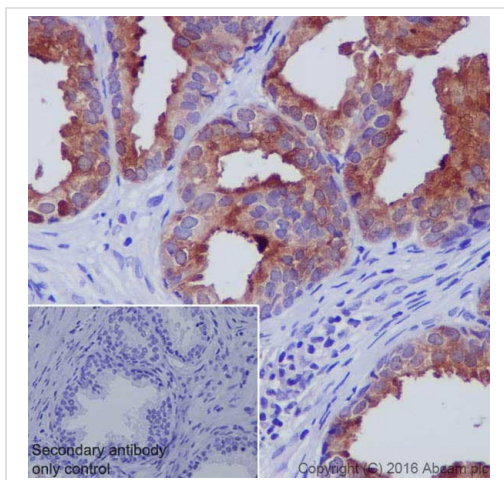
Predicted band size: 34 kDa

Observed band size: 35 kDa

Exposure time: 3 seconds

Blocking/Dilution buffer: 5% NFDM/TBST.

The expression level of GDF15 can be increased by TPA treatment (PMID: 15757899).



Immunohistochemistry (Formalin/PFA-fixed paraffin-embedded sections) - Anti-GDF15 antibody [EPR19939] (ab206414)

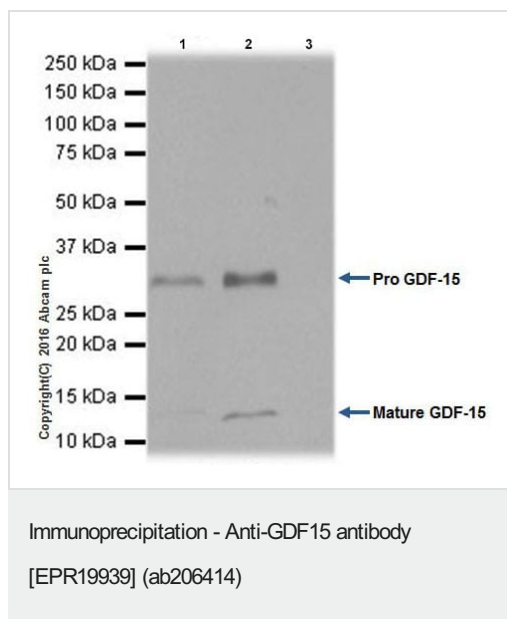
Immunohistochemical analysis of paraffin-embedded human prostate hyperplasia tissue labeling GDF15 with ab206414 at 1/100 dilution, followed by Goat Anti-Rabbit IgG H&L (HRP) (**ab97051**) at 1/500 dilution.

Cytoplasmic staining on human prostate hyperplasia is observed (PMID: 9593718). Positive staining on human placenta and prostate hyperplasia, other tissues tested were negative.

Counter stained with Hematoxylin.

Secondary antibody only control: Used PBS instead of primary antibody, secondary antibody is Goat Anti-Rabbit IgG H&L (HRP) (**ab97051**) at 1/500 dilution.

Perform heat mediated antigen retrieval with Tris/EDTA buffer pH 9.0 before commencing with IHC staining protocol.



GDF15 was immunoprecipitated from 0.35 mg of HepG2 (Human liver hepatocellular carcinoma cell line) whole cell lysate with ab206414 at 1/30 dilution.

Western blot was performed from the immunoprecipitate using ab206414 at 1/1000 dilution.

VeriBlot for IP Detection Reagent (HRP) ([ab131366](#)), was used for detection at 1/1000 dilution.

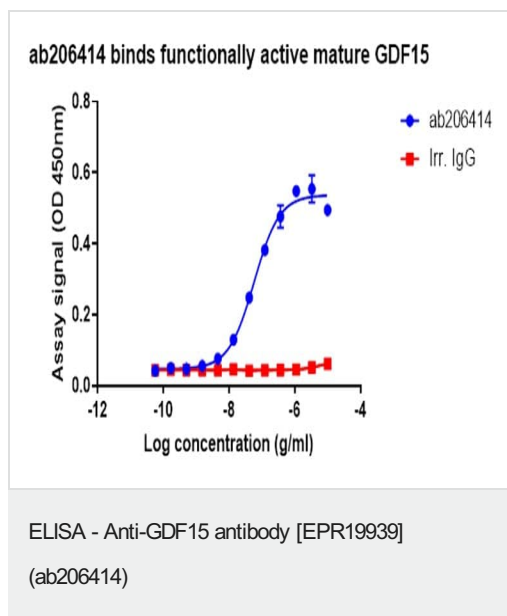
Lane 1: HepG2 whole cell lysate 10µg (Input).

Lane 2: ab206414 IP in HepG2 whole cell lysate.

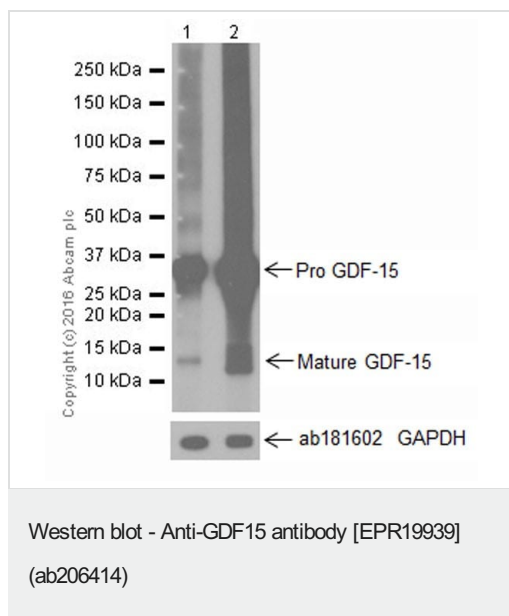
Lane 3: Rabbit IgG, monoclonal [EPR25A] - Isotype Control ([ab172730](#)) instead of ab206414 in HepG2 whole cell lysate.

Blocking and dilution buffer and concentration: 5% NFDm/TBST.

Exposure time: 10 seconds.



ELISA analysis of ab206414 binding functionally active mature GDF15 ([ab50077](#)) at 1 µg/mL.



All lanes : Anti-GDF15 antibody [EPR19939] (ab206414) at 1/1000 dilution

Lane 1 : Untreated HT1080 (Human fibrosarcoma cell line) whole cell lysate

Lane 2 : HT1080 (Human fibrosarcoma cell line) whole cell lysate treated with 200ng/ml Phorbol-12-myristate-13-acetate (TPA) for 24 hours

Lysates/proteins at 10 µg per lane.

Secondary

All lanes : Goat Anti-Rabbit IgG H&L (HRP) ([ab97051](#)) at 1/100000 dilution

Predicted band size: 34 kDa

Observed band size: 35 kDa

Exposure time: 1 minute

Blocking/Dilution buffer: 5% NFDM/TBST.

Both pro and mature form can be increased by TPA treatment.

Why choose a recombinant antibody?

| | |
|--|--|
| <p>Research with confidence Consistent and reproducible results</p> | <p>Long-term and scalable supply Recombinant technology</p> |
| <p>Success from the first experiment Confirmed specificity</p> | <p>Ethical standards compliant Animal-free production</p> |

Anti-GDF15 antibody [EPR19939] (ab206414)

Please note: All products are "FOR RESEARCH USE ONLY. NOT FOR USE IN DIAGNOSTIC PROCEDURES"

Our Abpromise to you: Quality guaranteed and expert technical support

- Replacement or refund for products not performing as stated on the datasheet
- Valid for 12 months from date of delivery
- Response to your inquiry within 24 hours
- We provide support in Chinese, English, French, German, Japanese and Spanish
- Extensive multi-media technical resources to help you
- We investigate all quality concerns to ensure our products perform to the highest standards

If the product does not perform as described on this datasheet, we will offer a refund or replacement. For full details of the Abpromise, please visit <https://www.abcam.com/abpromise> or contact our technical team.

Terms and conditions

- Guarantee only valid for products bought direct from Abcam or one of our authorized distributors