

## Product datasheet

### Anti-GDF15 antibody [EPR6982(2)] ab180929

Recombinant RabMAb

[3 References](#) [3 Images](#)

#### Overview

<b>Product name</b>	Anti-GDF15 antibody [EPR6982(2)]
<b>Description</b>	Rabbit monoclonal [EPR6982(2)] to GDF15
<b>Host species</b>	Rabbit
<b>Tested applications</b>	<b>Suitable for:</b> WB
<b>Species reactivity</b>	<b>Reacts with:</b> Human
<b>Immunogen</b>	Synthetic peptide. This information is proprietary to Abcam and/or its suppliers.
<b>Positive control</b>	LnCap and HepG2 cell lysates.
<b>General notes</b>	<p>This product is a recombinant monoclonal antibody, which offers several advantages including:</p> <ul style="list-style-type: none"><li>- High batch-to-batch consistency and reproducibility</li><li>- Improved sensitivity and specificity</li><li>- Long-term security of supply</li><li>- Animal-free production</li></ul> <p>For more information <a href="#">see here</a>.</p> <p>Our RabMAb<sup>®</sup> technology is a patented hybridoma-based technology for making rabbit monoclonal antibodies. For details on our patents, please refer to <a href="#">RabMAb<sup>®</sup> patents</a>.</p>

#### Properties

<b>Form</b>	Liquid
<b>Storage instructions</b>	Shipped at 4°C. Store at +4°C short term (1-2 weeks). Upon delivery aliquot. Store at -20°C long term. Avoid freeze / thaw cycle.
<b>Storage buffer</b>	Preservative: 0.01% Sodium azide Constituents: 59% PBS, 40% Glycerol, 0.05% BSA
<b>Purity</b>	Protein A purified
<b>Clonality</b>	Monoclonal
<b>Clone number</b>	EPR6982(2)
<b>Isotype</b>	IgG

#### Applications

## Applications

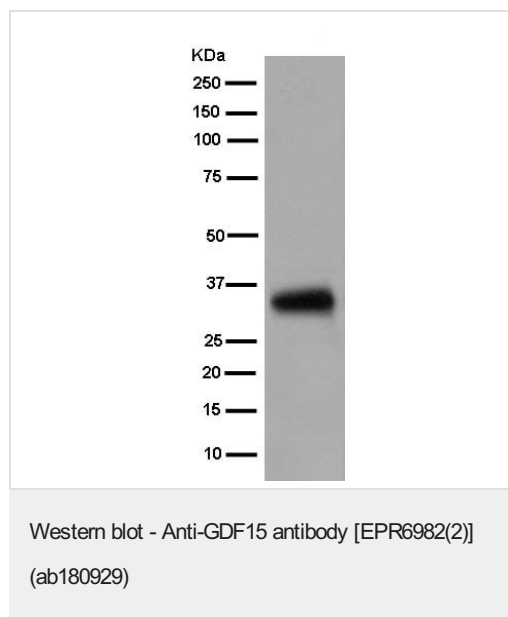
**The Abpromise guarantee** Our **Abpromise guarantee** covers the use of ab180929 in the following tested applications. The application notes include recommended starting dilutions; optimal dilutions/concentrations should be determined by the end user.

Application	Abreviews	Notes
WB		1/1000 - 1/10000. Detects a band of approximately 35 kDa (predicted molecular weight: 34 kDa).

## Target

<b>Tissue specificity</b>	Highly expressed in placenta, with lower levels in prostate and colon and some expression in kidney.
<b>Sequence similarities</b>	Belongs to the TGF-beta family.
<b>Cellular localization</b>	Secreted.

## Images

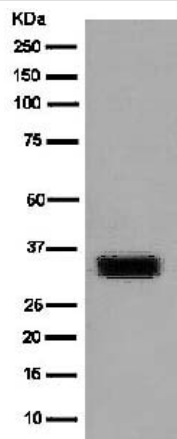


Anti-GDF15 antibody [EPR6982(2)] (ab180929) at 1/1000 dilution  
+ HepG2 cell lysate at 10 µg

### Secondary

Goat Anti-Rabbit IgG, (H+L), Peroxidase Conjugate at 1/1000 dilution

**Predicted band size:** 34 kDa



Anti-GDF15 antibody [EPR6982(2)] (ab180929) at 1/5000 dilution  
+ LnCap cell lysate at 10 µg

**Secondary**

Goat Anti-Rabbit IgG, (H+L), Peroxidase conjugate at 1/1000 dilution

**Predicted band size:** 34 kDa

Western blot - Anti-GDF15 antibody [EPR6982(2)] (ab180929)

Why choose a recombinant antibody?



**Research with confidence**  
Consistent and reproducible results



**Long-term and scalable supply**  
Recombinant technology



**Success from the first experiment**  
Confirmed specificity



**Ethical standards compliant**  
Animal-free production

Anti-GDF15 antibody [EPR6982(2)] (ab180929)

**Please note:** All products are "FOR RESEARCH USE ONLY. NOT FOR USE IN DIAGNOSTIC PROCEDURES"

**Our Abpromise to you: Quality guaranteed and expert technical support**

- Replacement or refund for products not performing as stated on the datasheet
- Valid for 12 months from date of delivery
- Response to your inquiry within 24 hours
- We provide support in Chinese, English, French, German, Japanese and Spanish
- Extensive multi-media technical resources to help you
- We investigate all quality concerns to ensure our products perform to the highest standards

If the product does not perform as described on this datasheet, we will offer a refund or replacement. For full details of the Abpromise, please visit <https://www.abcam.com/abpromise> or contact our technical team.

## Terms and conditions

---

- Guarantee only valid for products bought direct from Abcam or one of our authorized distributors