


Product datasheet

Anti-GDF6 antibody ab226853

[2 Images](#)

Overview

Product name	Anti-GDF6 antibody
Description	Rabbit polyclonal to GDF6
Host species	Rabbit
Tested applications	Suitable for: WB, IHC-P
Species reactivity	Reacts with: Rat, Human Predicted to work with: Mouse, Cow 
Immunogen	Recombinant fragment within Human GDF6 (internal sequence). The exact sequence is proprietary. Database link: Q6KF10
Positive control	IHC-P: Rat brain tissue. WB: U-87 MG whole cell extract.
General notes	<p>The Life Science industry has been in the grips of a reproducibility crisis for a number of years. Abcam is leading the way in addressing this with our range of recombinant monoclonal antibodies and knockout edited cell lines for gold-standard validation. Please check that this product meets your needs before purchasing.</p> <p>If you have any questions, special requirements or concerns, please send us an inquiry and/or contact our Support team ahead of purchase. Recommended alternatives for this product can be found below, along with publications, customer reviews and Q&As</p>

Properties

Form	Liquid
Storage instructions	Shipped at 4°C. Store at +4°C short term (1-2 weeks). Upon delivery aliquot. Store at -20°C long term. Avoid freeze / thaw cycle.
Storage buffer	pH: 7.00 Preservative: 0.025% Proclin 300 Constituents: 79% PBS, 20% Glycerol (glycerin, glycerine)
Purity	Immunogen affinity purified
Clonality	Polyclonal
Isotype	IgG

Applications

The Abpromise guarantee Our **Abpromise guarantee** covers the use of ab226853 in the following tested applications. The application notes include recommended starting dilutions; optimal dilutions/concentrations should be determined by the end user.

Application	Abreviews	Notes
WB		1/500 - 1/3000. Predicted molecular weight: 51 kDa.
IHC-P		1/100 - 1/1000.

Target

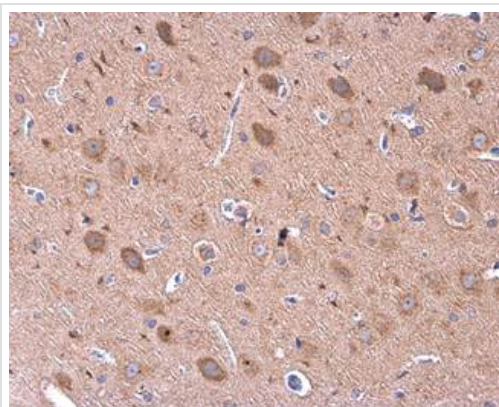
Function Growth factor that controls proliferation and cellular differentiation in the retina and bone formation. Plays a key role in regulating apoptosis during retinal development. Establishes dorsal-ventral positional information in the retina and controls the formation of the retinotectal map (PubMed:23307924). Required for normal formation of bones and joints in the limbs, skull, digits and axial skeleton. Plays a key role in establishing boundaries between skeletal elements during development. Regulation of GDF6 expression seems to be a mechanism for evolving species-specific changes in skeletal structures. Seems to positively regulate differentiation of chondrogenic tissue through the growth factor receptors subunits BMPR1A, BMPR1B, BMPR2 and ACVR2A, leading to the activation of SMAD1-SMAD5-SMAD8 complex. The regulation of chondrogenic differentiation is inhibited by NOG (PubMed:26643732). Also involved in the induction of adipogenesis from mesenchymal stem cells. This mechanism acts through the growth factor receptors subunits BMPR1A, BMPR2 and ACVR2A and the activation of SMAD1-SMAD5-SMAD8 complex and MAPK14/p38.

Involvement in disease Klippel-Feil syndrome 1, autosomal dominant
A chromosomal aberration involving GDF6 has been found in a patient with Klippel-Feil syndrome (KFS). Paracentric inv(8)(q22;2q23.3).
Microphthalmia, isolated, 4
Leber congenital amaurosis 17
Defects in POP1 may be the cause of multiple synostoses syndrome (SYNS). SYNS is a bone disease characterized by multiple progressive joint fusions that commonly involve proximal interphalangeal, tarsal-carpal joints. Additional features can include progressive conductive deafness.

Sequence similarities Belongs to the TGF-beta family.

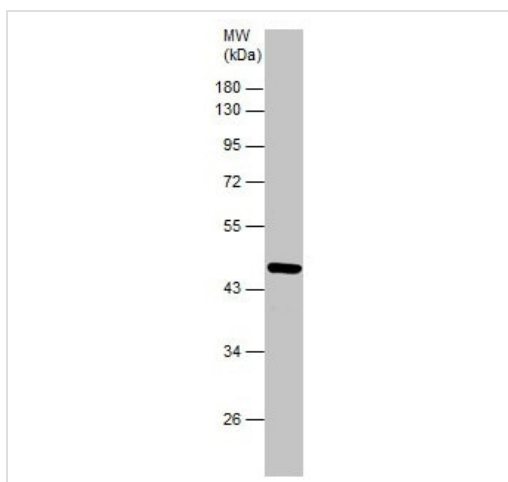
Cellular localization Secreted.

Images



Immunohistochemistry (Formalin/PFA-fixed paraffin-embedded sections) - Anti-GDF6 antibody (ab226853)

Paraffin-embedded rat brain tissue stained for GDF6 using ab226853 at 1/500 dilution in immunohistochemical analysis.



Western blot - Anti-GDF6 antibody (ab226853)

Anti-GDF6 antibody (ab226853) at 1/2000 dilution + U-87 MG (human glioblastoma-astrocytoma epithelial cell line) whole cell extract at 30 µg

Predicted band size: 51 kDa

10% SDS-PAGE gel.

Please note: All products are "FOR RESEARCH USE ONLY. NOT FOR USE IN DIAGNOSTIC PROCEDURES"

Our Promise to you: Quality guaranteed and expert technical support

- Replacement or refund for products not performing as stated on the datasheet
- Valid for 12 months from date of delivery
- Response to your inquiry within 24 hours
- We provide support in Chinese, English, French, German, Japanese and Spanish

- Extensive multi-media technical resources to help you
- We investigate all quality concerns to ensure our products perform to the highest standards

If the product does not perform as described on this datasheet, we will offer a refund or replacement. For full details of the Abpromise, please visit <https://www.abcam.com/abpromise> or contact our technical team.

Terms and conditions

- Guarantee only valid for products bought direct from Abcam or one of our authorized distributors