



Product datasheet

Anti-GDF7 antibody ab231273

3 Images

Overview

Product name	Anti-GDF7 antibody
Description	Rabbit polyclonal to GDF7
Host species	Rabbit
Tested applications	Suitable for: IHC-P, WB
Species reactivity	Reacts with: Mouse, Recombinant fragment
Immunogen	Recombinant fragment (His-T7-tag) corresponding to Mouse GDF7 aa 250-450. (Expressed in E.coli). Database link: P43029-2
	<div>  Run BLAST with  Run BLAST with </div>
Positive control	IHC-P: Mouse liver tissue. WB: Mouse heart lysate; Recombinant mouse GDF7 protein.
General notes	<p>The Life Science industry has been in the grips of a reproducibility crisis for a number of years. Abcam is leading the way in addressing this with our range of recombinant monoclonal antibodies and knockout edited cell lines for gold-standard validation. Please check that this product meets your needs before purchasing.</p> <p>If you have any questions, special requirements or concerns, please send us an inquiry and/or contact our Support team ahead of purchase. Recommended alternatives for this product can be found below, along with publications, customer reviews and Q&As</p>

Properties

Form	Liquid
Storage instructions	Shipped at 4°C. Store at +4°C short term (1-2 weeks). Upon delivery aliquot. Store at -20°C long term. Avoid freeze / thaw cycle.
Storage buffer	pH: 7.40 Preservative: 0.02% Sodium azide Constituents: 44.12% PBS, 55.77% Glycerol (glycerin, glycerine)
Purity	Immunogen affinity purified
Purification notes	ab231273 was purified by antigen-specific affinity chromatography followed by Protein A affinity chromatography.
Clonality	Polyclonal
Isotype	IgG

Applications

The Abpromise guarantee Our **Abpromise guarantee** covers the use of ab231273 in the following tested applications.

The application notes include recommended starting dilutions; optimal dilutions/concentrations should be determined by the end user.

Application	Abreviews	Notes
IHC-P		Use a concentration of 5 - 20 µg/ml.
WB		Use a concentration of 0.2 - 2 µg/ml. Predicted molecular weight: 48 kDa.

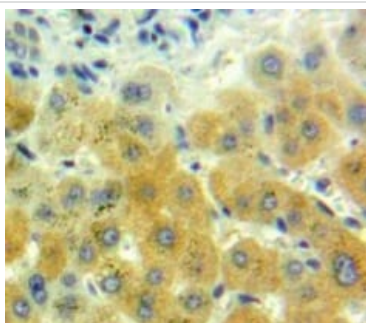
Target

Function May play an active role in the motor area of the primate neocortex.

Sequence similarities Belongs to the TGF-beta family.

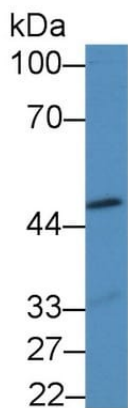
Cellular localization Secreted.

Images



Formalin-fixed, paraffin-embedded mouse liver tissue stained for GDF7 with ab231273 at 20 µg/ml in immunohistochemical analysis. DAB staining.

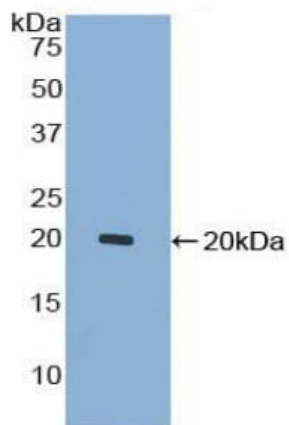
Immunohistochemistry (Formalin/PFA-fixed paraffin-embedded sections) - Anti-GDF7 antibody (ab231273)



Western blot - Anti-GDF7 antibody (ab231273)

Anti-GDF7 antibody (ab231273) at 2 µg/ml + Mouse heart lysate.

Predicted band size: 48 kDa



Western blot - Anti-GDF7 antibody (ab231273)

Anti-GDF7 antibody (ab231273) at 2 µg/ml + Recombinant GDF7 protein.

Predicted band size: 48 kDa

Please note: All products are "FOR RESEARCH USE ONLY. NOT FOR USE IN DIAGNOSTIC PROCEDURES"

Our Abpromise to you: Quality guaranteed and expert technical support

- Replacement or refund for products not performing as stated on the datasheet
- Valid for 12 months from date of delivery

- Response to your inquiry within 24 hours
- We provide support in Chinese, English, French, German, Japanese and Spanish
- Extensive multi-media technical resources to help you
- We investigate all quality concerns to ensure our products perform to the highest standards

If the product does not perform as described on this datasheet, we will offer a refund or replacement. For full details of the Abpromise, please visit <https://www.abcam.com/abpromise> or contact our technical team.

Terms and conditions

- Guarantee only valid for products bought direct from Abcam or one of our authorized distributors