

Product datasheet

Anti-GDNF Receptor alpha 1/GFRA1 antibody ab205372

[2 Images](#)

Overview

Product name	Anti-GDNF Receptor alpha 1/GFRA1 antibody
Description	Chicken polyclonal to GDNF Receptor alpha 1/GFRA1
Host species	Chicken
Specificity	ab205372 doesn't cross-react with hGFRa-2, hGFRa-3, hGFRa-4
Tested applications	Suitable for: ICC/IF, WB
Species reactivity	Reacts with: Human
Immunogen	Recombinant full length protein (His-tag) corresponding to Human GDNF Receptor alpha 1/GFRA1. Produced using CHO-based proprietary suspension cell line. Protein was purified by Ni-affinity chromatography following gel-filtration from cell culture supernatant. Database link: <u>P56159</u>
Positive control	U2OS cells; His tagged GDNF Receptor alpha 1/GFRA1.
General notes	<p>The Life Science industry has been in the grips of a reproducibility crisis for a number of years. Abcam is leading the way in addressing this with our range of recombinant monoclonal antibodies and knockout edited cell lines for gold-standard validation. Please check that this product meets your needs before purchasing.</p> <p>If you have any questions, special requirements or concerns, please send us an inquiry and/or contact our Support team ahead of purchase. Recommended alternatives for this product can be found below, along with publications, customer reviews and Q&As</p>

Properties

Form	Liquid
Storage instructions	Shipped at 4°C. Store at +4°C short term (1-2 weeks). Upon delivery aliquot. Store at -20°C long term. Avoid freeze / thaw cycle.
Storage buffer	pH: 7.40 Constituent: 100% PBS
Purity	As product is (NH ₄) ₂ SO ₄ precipitate, mix well by pipetting or vortexing prior use. Immunogen affinity purified

Clonality	Polyclonal
Isotype	IgY

Applications

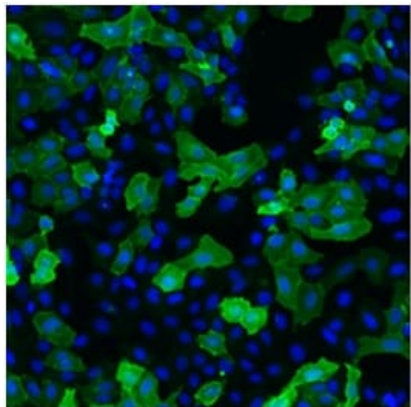
The Abpromise guarantee Our **Abpromise guarantee** covers the use of ab205372 in the following tested applications. The application notes include recommended starting dilutions; optimal dilutions/concentrations should be determined by the end user.

Application	Abreviews	Notes
ICC/IF		Use a concentration of 0.5 - 1 µg/ml.
WB		Use a concentration of 0.1 - 0.2 µg/ml. Predicted molecular weight: 51 kDa.

Target

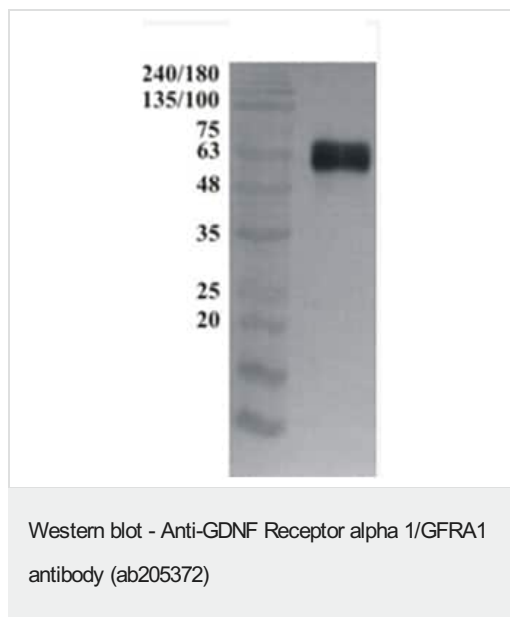
Function	Receptor for GDNF. Mediates the GDNF-induced autophosphorylation and activation of the RET receptor.
Sequence similarities	Belongs to the GDNFR family.
Cellular localization	Cell membrane.

Images



Immunofluorescent analysis of U2OS cells labeling GDNF Receptor alpha 1/GFRA1 using ab205372 at 1/2000. Goat anti-chicken IgY - H&L DyLight 550 (**ab96952**) at 1/200 dilution was used as secondary antibody. For nuclear staining DAPI was used.

Immunocytochemistry/ Immunofluorescence - Anti-GDNF Receptor alpha 1/GFRA1 antibody (ab205372)



Anti-GDNF Receptor alpha 1/GFRA1 antibody (ab205372) at 1/5000 dilution + His tagged GDNF Receptor alpha 1/GFRA1 at 0.1 µg

Secondary

Rabbit anti-chicken antibody

Predicted band size: 51 kDa

Please note: All products are "FOR RESEARCH USE ONLY. NOT FOR USE IN DIAGNOSTIC PROCEDURES"

Our Abpromise to you: Quality guaranteed and expert technical support

- Replacement or refund for products not performing as stated on the datasheet
- Valid for 12 months from date of delivery
- Response to your inquiry within 24 hours
- We provide support in Chinese, English, French, German, Japanese and Spanish
- Extensive multi-media technical resources to help you
- We investigate all quality concerns to ensure our products perform to the highest standards

If the product does not perform as described on this datasheet, we will offer a refund or replacement. For full details of the Abpromise, please visit <https://www.abcam.com/abpromise> or contact our technical team.

Terms and conditions

- Guarantee only valid for products bought direct from Abcam or one of our authorized distributors