

### Anti-Gelsolin antibody [2/Gelsolin] ab303676

Recombinant

3 Images

#### Overview

<b>Product name</b>	Anti-Gelsolin antibody [2/Gelsolin]
<b>Description</b>	Mouse monoclonal [2/Gelsolin] to Gelsolin
<b>Host species</b>	Mouse
<b>Tested applications</b>	<b>Suitable for:</b> Indirect ELISA, WB <b>Unsuitable for:</b> ICC/IF, IHC-P or IP
<b>Species reactivity</b>	<b>Reacts with:</b> Human <b>Does not react with:</b> Mouse, Rat
<b>Immunogen</b>	Recombinant fragment. This information is proprietary to Abcam and/or its suppliers.
<b>Positive control</b>	WB : THP-1 cell culture supernatant. THP-1 and MCF7 whole cell lysate. Human plasma. ELISA (Indirect): Human gelsolin.
<b>General notes</b>	<p>This antibody clone is manufactured by Abcam. If you require a custom buffer formulation or conjugation for your experiments, please contact <a href="mailto:orders@abcam.com">orders@abcam.com</a>.</p> <p>This product is a recombinant monoclonal antibody, which offers several advantages including:</p> <ul style="list-style-type: none"><li>- High batch-to-batch consistency and reproducibility</li><li>- Improved sensitivity and specificity</li><li>- Long-term security of supply</li><li>- Animal-free production</li></ul> <p>For more information <a href="#">see here</a>.</p>

#### Properties

<b>Form</b>	Liquid
<b>Storage instructions</b>	Shipped at 4°C. Store at +4°C short term (1-2 weeks). Upon delivery aliquot. Store at -20°C long term. Avoid freeze / thaw cycle.
<b>Storage buffer</b>	pH: 7.20 Preservative: 0.01% Sodium azide Constituents: 40% Glycerol (glycerin, glycerine), 0.05% BSA, 59% PBS
<b>Purity</b>	Protein A purified
<b>Clonality</b>	Monoclonal
<b>Clone number</b>	2/Gelsolin

Isotype

IgG2a

## Applications

**The Abpromise guarantee** Our **Abpromise guarantee** covers the use of ab303676 in the following tested applications. The application notes include recommended starting dilutions; optimal dilutions/concentrations should be determined by the end user.

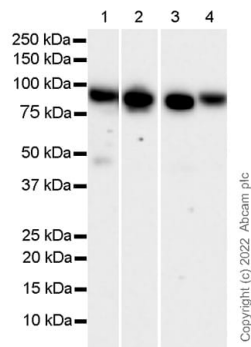
Application	Abreviews	Notes
Indirect ELISA		1/1000.
WB		1/1000. Predicted molecular weight: 86 kDa.

**Application notes** Is unsuitable for ICC/IF, IHC-P or IP.

## Target

<b>Function</b>	Calcium-regulated, actin-modulating protein that binds to the plus (or barbed) ends of actin monomers or filaments, preventing monomer exchange (end-blocking or capping). It can promote the assembly of monomers into filaments (nucleation) as well as sever filaments already formed. Plays a role in ciliogenesis.
<b>Tissue specificity</b>	Phagocytic cells, platelets, fibroblasts, nonmuscle cells, smooth and skeletal muscle cells.
<b>Involvement in disease</b>	Defects in GSN are the cause of amyloidosis type 5 (AMYL5) [MIM:105120]; also known as familial amyloidosis Finnish type. AMYL5 is a hereditary generalized amyloidosis due to gelsolin amyloid deposition. It is typically characterized by cranial neuropathy and lattice corneal dystrophy. Most patients have modest involvement of internal organs, but severe systemic disease can develop in some individuals causing peripheral polyneuropathy, amyloid cardiomyopathy, and nephrotic syndrome leading to renal failure.
<b>Sequence similarities</b>	Belongs to the villin/gelsolin family. Contains 6 gelsolin-like repeats.
<b>Post-translational modifications</b>	Phosphorylation on Tyr-86, Tyr-409, Tyr-465, Tyr-603 and Tyr-651 in vitro is induced in presence of phospholipids.
<b>Cellular localization</b>	Cytoplasm > cytoskeleton and Secreted.

## Images



Western blot - Anti-Gelsolin antibody [2/Gelsolin]  
(ab303676)

**All lanes :** Anti-Gelsolin antibody [2/Gelsolin] (ab303676) at 1/1000 dilution

**Lane 1 :** THP-1 (human monocytic leukemia monocyte) cell culture supernatant at 10  $\mu$ l

**Lane 2 :** THP-1 (human monocytic leukemia monocyte), whole cell lysate at 10  $\mu$ g

**Lane 3 :** MCF7 (human breast adenocarcinoma epithelial cell), whole cell lysate at 10  $\mu$ g

**Lane 4 :** Human plasma at 10  $\mu$ g

### Secondary

**All lanes :** Peroxidase-Conjugated Goat anti-Mouse IgG (H+L) at 1/10000 dilution

**Predicted band size:** 86 kDa

Blocking and diluting buffer and concentration: 5% NFDm/TBST.

The secretory isoform of gelsolin is at 86kDa.

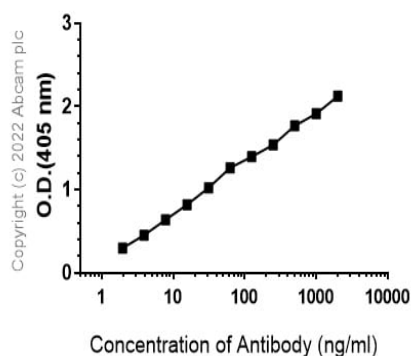
The cytoplasmic isoforms of gelsolin are at 81kDa according to the Uniprot.

Exposure time:

Lanes 1: 48 seconds

Lanes 2-4: 10 seconds

### Indirect ELISA antibody dose-response curve antigen at 1000 ng/ml



Indirect ELISA - Anti-Gelsolin antibody [2/Gelsolin]  
(ab303676)

### Indirect ELISA - Anti-Gelsolin antibody [2/Gelsolin] (ab303676)

Antigen used at 1000 ng/ml.

AB303676 used at 0-2000 ng/ml.

Secondary: Alkaline Phosphatase-conjugated AffiniPure Goat Anti-Mouse IgG (H+L) used at a 1/1000 dilution.

### Why choose a recombinant antibody?



**Research with  
confidence**  
Consistent and  
reproducible results



**Long-term and  
scalable supply**  
Recombinant  
technology



**Success from the  
first experiment**  
Confirmed  
specificity



**Ethical standards  
compliant**  
Animal-free  
production

Anti-Gelsolin antibody [2/Gelsolin] (ab303676)

**Please note:** All products are "FOR RESEARCH USE ONLY. NOT FOR USE IN DIAGNOSTIC PROCEDURES"

### Our Abpromise to you: Quality guaranteed and expert technical support

- Replacement or refund for products not performing as stated on the datasheet
- Valid for 12 months from date of delivery
- Response to your inquiry within 24 hours

- We provide support in Chinese, English, French, German, Japanese and Spanish
- Extensive multi-media technical resources to help you
- We investigate all quality concerns to ensure our products perform to the highest standards

If the product does not perform as described on this datasheet, we will offer a refund or replacement. For full details of the Abpromise, please visit <https://www.abcam.com/abpromise> or contact our technical team.

#### **Terms and conditions**

---

- Guarantee only valid for products bought direct from Abcam or one of our authorized distributors