


Product datasheet

Anti-Gelsolin antibody [EP1940Y] ab134183

RabMAb

[3 References](#) [3 Images](#)

Overview

| | |
|----------------------------|---|
| Product name | Anti-Gelsolin antibody [EP1940Y] |
| Description | Rabbit monoclonal [EP1940Y] to Gelsolin |
| Host species | Rabbit |
| Tested applications | Suitable for: WB, IHC-P Unsuitable for: Flow Cyt, ICC/IF or IP |
| Species reactivity | Reacts with: Mouse, Human Predicted to work with: Rat  |
| Immunogen | Synthetic peptide corresponding to Human Gelsolin aa 650-750 (C terminal). Database link: P06396 |
| Positive control | NIH3T3 cell lysate; Human tonsil tissue |
| General notes | Our RabMAb [®] technology is a patented hybridoma-based technology for making rabbit monoclonal antibodies. For details on our patents, please refer to RabMAb[®] patents . The Life Science industry has been in the grips of a reproducibility crisis for a number of years. Abcam is leading the way in addressing this with our range of recombinant monoclonal antibodies and knockout edited cell lines for gold-standard validation. Please check that this product meets your needs before purchasing. If you have any questions, special requirements or concerns, please send us an inquiry and/or contact our Support team ahead of purchase. Recommended alternatives for this product can be found below, along with publications, customer reviews and Q&As |

Properties

| | |
|-----------------------------|---|
| Form | Liquid |
| Storage instructions | Shipped at 4°C. Store at -20°C. Stable for 12 months at -20°C. |
| Storage buffer | pH: 7.2 Preservative: 0.05% Sodium azide Constituents: 0.1% BSA, 40% Glycerol (glycerin, glycerine), 9.85% Tris glycine, 50% Tissue culture supernatant |
| Purity | Tissue culture supernatant |

| | |
|---------------------|------------|
| Clonality | Monoclonal |
| Clone number | EP1940Y |
| Isotype | IgG |

Applications

The Abpromise guarantee Our **Abpromise guarantee** covers the use of ab134183 in the following tested applications. The application notes include recommended starting dilutions; optimal dilutions/concentrations should be determined by the end user.

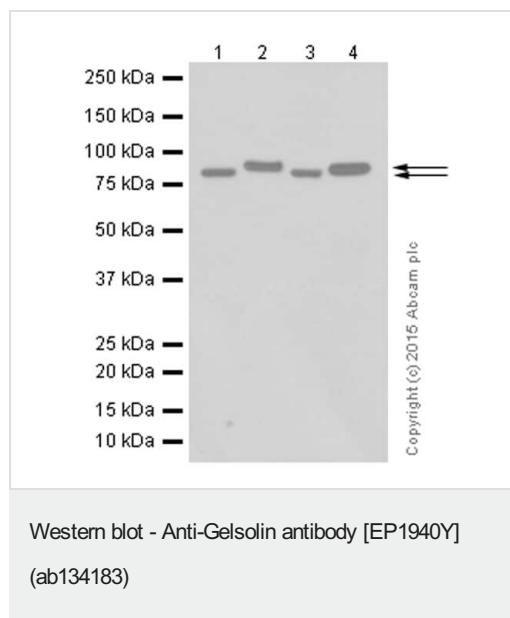
| Application | Abreviews | Notes |
|--------------|-----------|---|
| WB | | 1/1000 - 1/5000. Predicted molecular weight: 86 kDa. |
| IHC-P | | 1/100 - 1/250. Perform heat mediated antigen retrieval with citrate buffer pH 6 before commencing with IHC staining protocol. |

Application notes Is unsuitable for Flow Cyt, ICC/IF or IP.

Target

| | |
|---|--|
| Function | Calcium-regulated, actin-modulating protein that binds to the plus (or barbed) ends of actin monomers or filaments, preventing monomer exchange (end-blocking or capping). It can promote the assembly of monomers into filaments (nucleation) as well as sever filaments already formed. Plays a role in ciliogenesis. |
| Tissue specificity | Phagocytic cells, platelets, fibroblasts, nonmuscle cells, smooth and skeletal muscle cells. |
| Involvement in disease | Defects in GSN are the cause of amyloidosis type 5 (AMYL5) [MIM:105120]; also known as familial amyloidosis Finnish type. AMYL5 is a hereditary generalized amyloidosis due to gelsolin amyloid deposition. It is typically characterized by cranial neuropathy and lattice corneal dystrophy. Most patients have modest involvement of internal organs, but severe systemic disease can develop in some individuals causing peripheral polyneuropathy, amyloid cardiomyopathy, and nephrotic syndrome leading to renal failure. |
| Sequence similarities | Belongs to the villin/gelsolin family. Contains 6 gelsolin-like repeats. |
| Post-translational modifications | Phosphorylation on Tyr-86, Tyr-409, Tyr-465, Tyr-603 and Tyr-651 in vitro is induced in presence of phospholipids. |
| Cellular localization | Cytoplasm > cytoskeleton and Secreted. |

Images



All lanes : Anti-Gelsolin antibody [EP1940Y] (ab134183) at 1/10000 dilution

Lane 1 : THP-1 whole cell lysate

Lane 2 : THP-1 cultured medium

Lane 3 : MCF-7 whole cell lysate

Lane 4 : Human plasma

Lysates/proteins at 10 µg per lane.

Secondary

All lanes : Goat Anti-Rabbit IgG H&L (HRP) ([ab97051](#)) at 1/20000 dilution

Predicted band size: 86 kDa

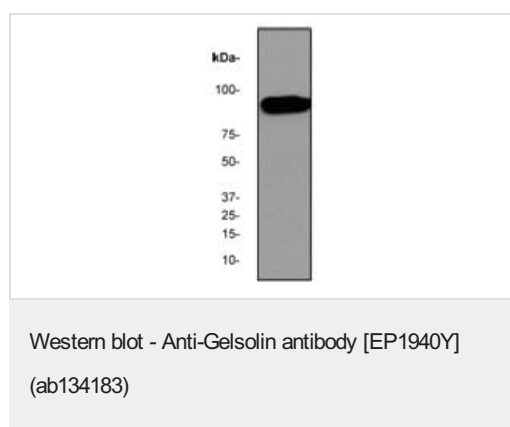
Observed band size: 81,86 kDa

Exposure time: 10 seconds

Blockiing buffer 5% NFDM/TBST

Diluting buffer 5% NFDM/TBST

The secretory isoform of gelsolin is at 86kDa. The cytoplasmic isoforms of gelsolin are at 81kDa.

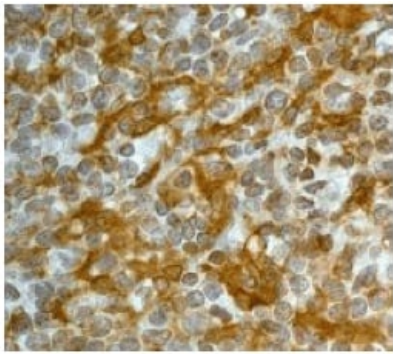


Anti-Gelsolin antibody [EP1940Y] (ab134183) at 1/5000 dilution + NIH3T3 cell lysate at 10 µg

Secondary

HRP labelled goat anti-rabbit at 1/2000 dilution

Predicted band size: 86 kDa



Immunohistochemistry (Formalin/PFA-fixed paraffin-embedded sections) - Anti-Gelsolin antibody [EP1940Y] (ab134183)

Immunohistochemical analysis of paraffin-embedded Human tonsil tissue labelling Gelsolin with ab134183 at 1/100 dilution.

Perform heat mediated antigen retrieval with citrate buffer pH 6 before commencing with IHC staining protocol.

Please note: All products are "FOR RESEARCH USE ONLY. NOT FOR USE IN DIAGNOSTIC PROCEDURES"

Our Abpromise to you: Quality guaranteed and expert technical support

- Replacement or refund for products not performing as stated on the datasheet
- Valid for 12 months from date of delivery
- Response to your inquiry within 24 hours
- We provide support in Chinese, English, French, German, Japanese and Spanish
- Extensive multi-media technical resources to help you
- We investigate all quality concerns to ensure our products perform to the highest standards

If the product does not perform as described on this datasheet, we will offer a refund or replacement. For full details of the Abpromise, please visit <https://www.abcam.com/abpromise> or contact our technical team.

Terms and conditions

- Guarantee only valid for products bought direct from Abcam or one of our authorized distributors