

Product datasheet

Anti-Gemin 5 antibody [EPR17841] ab201691

Recombinant RabMAb

[3 References](#) [6 Images](#)

Overview

Product name	Anti-Gemin 5 antibody [EPR17841]
Description	Rabbit monoclonal [EPR17841] to Gemin 5
Host species	Rabbit
Tested applications	Suitable for: WB, ICC/IF, IP, Flow Cyt (Intra)
Species reactivity	Reacts with: Human
Immunogen	Recombinant fragment. This information is proprietary to Abcam and/or its suppliers.
Positive control	WB: HeLa, K562 and HEK-293 cell lysates ICC/IF: HeLa and Jurkat cells. Flow Cyt (intra): HEK-293 cells. IP: HeLa whole cell lysate.
General notes	<p>This product is a recombinant monoclonal antibody, which offers several advantages including:</p> <ul style="list-style-type: none"> - High batch-to-batch consistency and reproducibility - Improved sensitivity and specificity - Long-term security of supply - Animal-free production <p>For more information see here.</p> <p>Our RabMAb[®] technology is a patented hybridoma-based technology for making rabbit monoclonal antibodies. For details on our patents, please refer to RabMAb[®] patents.</p>

Properties

Form	Liquid
Storage instructions	Shipped at 4°C. Store at +4°C short term (1-2 weeks). Upon delivery aliquot. Store at -20°C long term. Avoid freeze / thaw cycle.
Storage buffer	pH: 7.2 Preservative: 0.01% Sodium azide Constituents: 59% PBS, 40% Glycerol (glycerin, glycerine), 0.05% BSA
Purity	Protein A purified
Clonality	Monoclonal
Clone number	EPR17841
Isotype	IgG

Applications

The Abpromise guarantee

Our **Abpromise guarantee** covers the use of ab201691 in the following tested applications.

The application notes include recommended starting dilutions; optimal dilutions/concentrations should be determined by the end user.

Application	Abreviews	Notes
WB		1/1000. Detects a band of approximately 168 kDa (predicted molecular weight: 168 kDa).
ICC/IF		1/600.
IP		1/70.
Flow Cyt (Intra)		1/250.

Target

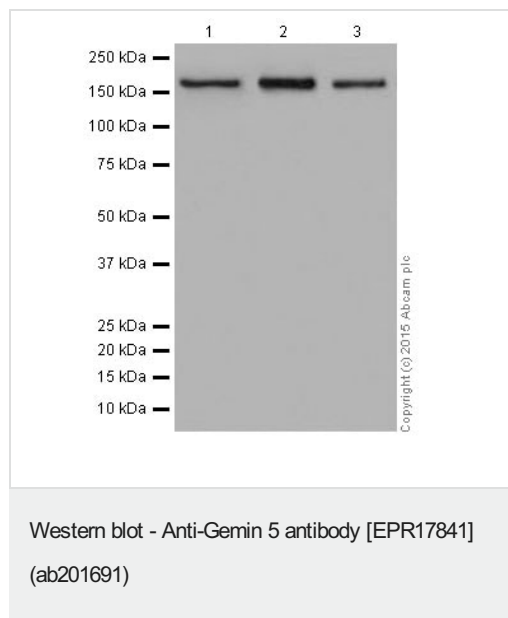
Relevance

Gemin 5 is part of a large macromolecular complex localized to both the cytoplasm and the nucleus that plays a role in the cytoplasmic assembly of small nuclear ribonucleoproteins (snRNPs). Other members of this complex include SMN, Gemin 2 (SIP1), Gemin 3 (DDX20), and Gemin 4.

Cellular localization

Nuclear and cytoplasmic

Images



All lanes : Anti-Gemin 5 antibody [EPR17841] (ab201691) at 1/1000 dilution

Lane 1 : HeLa (Human epithelial cells from cervix adenocarcinoma) cell lysate

Lane 2 : K562 (Human chronic myelogenous leukemia cells from bone marrow) cell lysate

Lane 3 : HEK-293 (Human epithelial cells from embryonic kidney) cell lysate

Lysates/proteins at 20 µg per lane.

Secondary

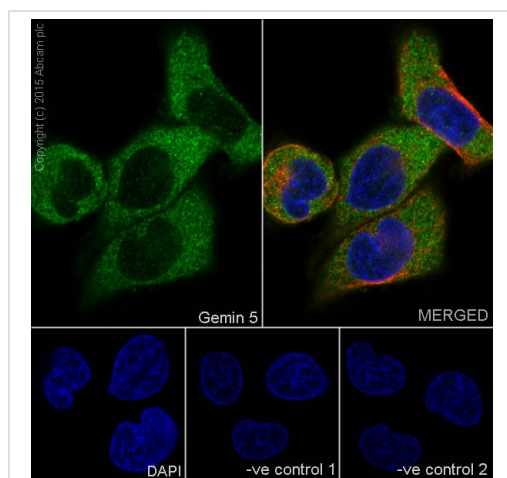
All lanes : Goat Anti-Rabbit IgG, (H+L), Peroxidase conjugated at 1/1000 dilution

Predicted band size: 168 kDa

Observed band size: 168 kDa

Exposure time: 7 seconds

Blocking/Dilution buffer: 5% NFDN/TBST.



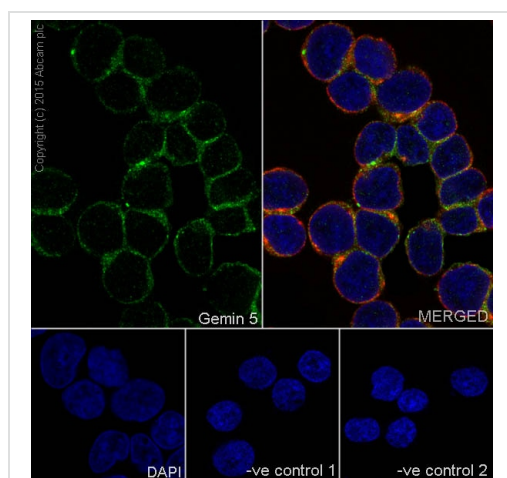
Immunocytochemistry/ Immunofluorescence - Anti-Gemin 5 antibody [EPR17841] (ab201691)

Immunofluorescent analysis of 4% paraformaldehyde-fixed, 0.1% Triton X-100 permeabilized HeLa (Human epithelial cells from cervix adenocarcinoma) cells labeling Gemin 5 with ab201691 at 1/600 dilution, followed by Goat anti-rabbit IgG (Alexa Fluor® 488) (**ab150077**) secondary antibody at 1/500 dilution (green). Confocal image showing cytoplasmic staining on HeLa cell line. The nuclear counter stain is DAPI (blue). Tubulin is detected with **ab7291** (anti-Tubulin mouse mAb) at 1/1000 dilution and **ab150120** (AlexaFluor®594 Goat anti-Mouse secondary) at 1/500 dilution (red).

The negative controls are as follows;

-ve control 1: ab201691 at 1/600 dilution followed by **ab150120** (AlexaFluor®594 Goat anti-Mouse secondary) at 1/500 dilution.

-ve control 2: **ab7291** (anti-Tubulin mouse mAb) at 1/1000 dilution followed by **ab150077** (Alexa Fluor®488 Goat Anti-Rabbit IgG H&L) at 1/400 dilution.



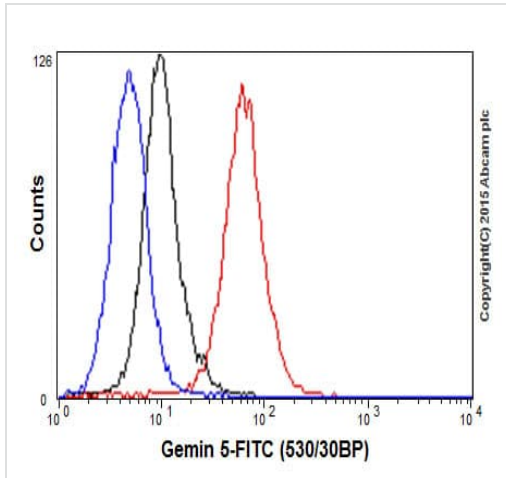
Immunocytochemistry/ Immunofluorescence - Anti-Gemin 5 antibody [EPR17841] (ab201691)

Immunofluorescent analysis of 4% paraformaldehyde-fixed, 0.1% Triton X-100 permeabilized Jurkat (Human T cell leukemia cells from peripheral blood) cells labeling Gemin 5 with ab201691 at 1/600 dilution, followed by Goat anti-rabbit IgG (Alexa Fluor® 488) (**ab150077**) secondary antibody at 1/500 dilution (green). Confocal image showing cytoplasmic staining on Jurkat cell line. The nuclear counter stain is DAPI (blue). Tubulin is detected with **ab7291** (anti-Tubulin mouse mAb) at 1/1000 dilution and **ab150120** (AlexaFluor®594 Goat anti-Mouse secondary) at 1/500 dilution (red).

The negative controls are as follows;

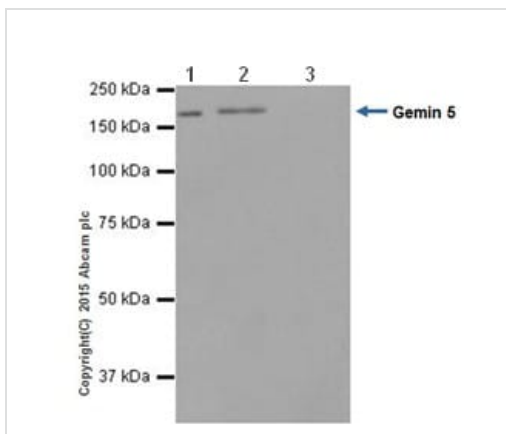
-ve control 1: ab201691 at 1/600 dilution followed by **ab150120** (AlexaFluor®594 Goat anti-Mouse secondary) at 1/500 dilution.

-ve control 2: **ab7291** (anti-Tubulin mouse mAb) at 1/1000 dilution followed by **ab150077** (Alexa Fluor®488 Goat Anti-Rabbit IgG H&L) at 1/400 dilution.



Flow Cytometry (Intracellular) - Anti-Gemin 5 antibody [EPR17841] (ab201691)

Intracellular flow cytometric analysis of 2% paraformaldehyde-fixed HEK-293 (Human epithelial cells from embryonic kidney) cells labeling Gemin 5 with ab201691 at 1/250 dilution (red) compared with a rabbit monoclonal IgG isotype control (**ab172730**; black) and an unlabelled control (cells without incubation with primary antibody and secondary antibody; blue). Goat anti rabbit IgG (FITC) at 1/150 dilution was used as the secondary antibody.



Immunoprecipitation - Anti-Gemin 5 antibody [EPR17841] (ab201691)





Gemin 5 was immunoprecipitated from 1mg of HeLa (Human epithelial cells from cervix adenocarcinoma) whole cell lysate with ab201691 at 1/70 dilution. Western blot was performed from the immunoprecipitate using ab201691 at 1/1000 dilution. VeriBlot for IP Detection Reagent (HRP) (**ab131366**), was used for detection at 1/1500 dilution.

Lane 1: HeLa whole cell lysate 10 µg (Input). Lane 2: ab201691 IP in HeLa whole cell lysate. Lane 3: Rabbit monoclonal IgG (**ab172730**) instead of ab201691 in HeLa whole cell lysate.

Blocking and dilution buffer and concentration: 5% NFDN/TBST.

Exposure time: 3 seconds.

Why choose a recombinant antibody?

 <p>Research with confidence Consistent and reproducible results</p>	 <p>Long-term and scalable supply Recombinant technology</p>
 <p>Success from the first experiment Confirmed specificity</p>	 <p>Ethical standards compliant Animal-free production</p>

Anti-Gemin 5 antibody [EPR17841] (ab201691)

Please note: All products are "FOR RESEARCH USE ONLY. NOT FOR USE IN DIAGNOSTIC PROCEDURES"

Our Abpromise to you: Quality guaranteed and expert technical support

- Replacement or refund for products not performing as stated on the datasheet
- Valid for 12 months from date of delivery
- Response to your inquiry within 24 hours
- We provide support in Chinese, English, French, German, Japanese and Spanish
- Extensive multi-media technical resources to help you
- We investigate all quality concerns to ensure our products perform to the highest standards

If the product does not perform as described on this datasheet, we will offer a refund or replacement. For full details of the Abpromise, please visit <https://www.abcam.com/abpromise> or contact our technical team.

Terms and conditions

- Guarantee only valid for products bought direct from Abcam or one of our authorized distributors