


Product datasheet

Anti-GFI1 antibody ab21061

★★★★★ [3 Abreviews](#) [14 References](#) [1 Image](#)

Overview

Product name	Anti-GFI1 antibody
Description	Rabbit polyclonal to GFI1
Host species	Rabbit
Tested applications	Suitable for: WB
Species reactivity	Reacts with: Human Predicted to work with: Mouse, Rat, Chicken, Dog, Xenopus laevis 
Immunogen	Synthetic peptide corresponding to Human GFI1 (C terminal) conjugated to keyhole limpet haemocyanin. (Peptide available as ab222418 , ab22461)
Positive control	THP1 (Human acute monocytic leukemia cell line) Whole Cell Lysate (ab7913)
General notes	<p>The Life Science industry has been in the grips of a reproducibility crisis for a number of years. Abcam is leading the way in addressing this with our range of recombinant monoclonal antibodies and knockout edited cell lines for gold-standard validation. Please check that this product meets your needs before purchasing.</p> <p>If you have any questions, special requirements or concerns, please send us an inquiry and/or contact our Support team ahead of purchase. Recommended alternatives for this product can be found below, along with publications, customer reviews and Q&As</p>

Properties

Form	Liquid
Storage instructions	Shipped at 4°C. Store at +4°C short term (1-2 weeks). Upon delivery aliquot. Store at -20°C or -80°C. Avoid freeze / thaw cycle.
Storage buffer	pH: 7.40 Preservative: 0.02% Sodium azide Constituent: PBS Batches of this product that have a concentration < 1mg/ml may have BSA added as a stabilising agent. If you would like information about the formulation of a specific lot, please contact our scientific support team who will be happy to help.
Purity	Immunogen affinity purified

Clonality	Polyclonal
Isotype	IgG

Applications

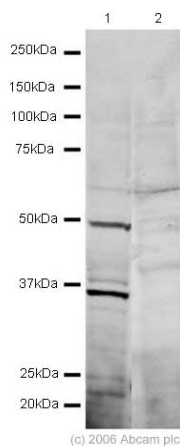
The Abpromise guarantee Our **Abpromise guarantee** covers the use of ab21061 in the following tested applications. The application notes include recommended starting dilutions; optimal dilutions/concentrations should be determined by the end user.

Application	Abreviews	Notes
WB	★★★★★ (1)	Use a concentration of 1 µg/ml. Detects a band of approximately 49 kDa (predicted molecular weight: 45 kDa).

Target

Function	Transcription factor regulating the expression of genes active during S-phase of the cell cycle in hematopoietic cells. Represses ELA2 transcription.
Involvement in disease	Defects in GFI1 are a cause of neutropenia severe congenital autosomal dominant type 2 (SCN2) [MIM:613107]. SCN2 is a disorder of hematopoiesis characterized by a maturation arrest of granulopoiesis at the level of promyelocytes with peripheral blood absolute neutrophil counts below $0.5 \times 10^9/l$ and early onset of severe bacterial infections. Defects in GFI1 are a cause of dominant nonimmune chronic idiopathic neutropenia of adults (NI-CINA) [MIM:607847]. NI-CINA is a relatively mild form of neutropenia diagnosed in adults, but predisposing to leukemia in a subset of patients.
Sequence similarities	Contains 6 C2H2-type zinc fingers.
Domain	The Gly/Ala-rich region may indicate that Gfi-1 is a repressor of its target genes.
Post-translational modifications	Ubiquitinated.
Cellular localization	Nucleus.

Images



Western blot - Anti-GFI1 antibody (ab21061)

All lanes : Anti-GFI1 antibody (ab21061) at 1 µg/ml

Lane 1 : THP-1 whole cell lysate (**ab7913**)

Lane 2 : THP-1 whole cell lysate (**ab7913**) with GFI1 peptide (**ab22461**) at 1 µg/ml

Lysates/proteins at 20 µg per lane.

Secondary

All lanes : Goat polyclonal to Rabbit IgG (Alexa Fluor® 680)

Performed under reducing conditions.

Predicted band size: 45 kDa

Observed band size: 49 kDa

Additional bands at: 36 kDa (possible cleavage fragment), 36 kDa (possible cross reactivity)

ab21061 detects a band of ~49kDa which is similar to the expected size of GFI1 (45kDa). This band is competed away by incubation with the immunizing peptide. A smaller band (~36kDa) is seen that may correspond to a crossreacting peptide or to a degradation product, as it is also competed away by addition of the immunizing peptide.

Please note: All products are "FOR RESEARCH USE ONLY. NOT FOR USE IN DIAGNOSTIC PROCEDURES"

Our Abpromise to you: Quality guaranteed and expert technical support

- Replacement or refund for products not performing as stated on the datasheet
- Valid for 12 months from date of delivery
- Response to your inquiry within 24 hours
- We provide support in Chinese, English, French, German, Japanese and Spanish
- Extensive multi-media technical resources to help you
- We investigate all quality concerns to ensure our products perform to the highest standards

If the product does not perform as described on this datasheet, we will offer a refund or replacement. For full details of the Abpromise, please visit <https://www.abcam.com/abpromise> or contact our technical team.

Terms and conditions

- Guarantee only valid for products bought direct from Abcam or one of our authorized distributors