

Product datasheet

Anti-GFM1 antibody [EPR12263] ab171945

Recombinant RabMAb

[1 References](#) [4 Images](#)

Overview

Product name	Anti-GFM1 antibody [EPR12263]
Description	Rabbit monoclonal [EPR12263] to GFM1
Host species	Rabbit
Tested applications	Suitable for: WB, IHC-P Unsuitable for: Flow Cyt or IP
Species reactivity	Reacts with: Human Does not react with: Mouse, Rat
Immunogen	Recombinant fragment within Human GFM1. The exact sequence is proprietary. Database link: Q96RP9
Positive control	HeLa, NCIH460, U87 MG and 293T cell lysates; Human cervical carcinoma tissue and Human kidney tissue.
General notes	This product is a recombinant monoclonal antibody, which offers several advantages including: <ul style="list-style-type: none">- High batch-to-batch consistency and reproducibility- Improved sensitivity and specificity- Long-term security of supply- Animal-free production For more information see here . Our RabMAb [®] technology is a patented hybridoma-based technology for making rabbit monoclonal antibodies. For details on our patents, please refer to RabMAb[®] patents .

Properties

Form	Liquid
Storage instructions	Shipped at 4°C. Store at +4°C short term (1-2 weeks). Upon delivery aliquot. Store at -20°C long term. Avoid freeze / thaw cycle.
Storage buffer	pH: 7.20 Preservative: 0.01% Sodium azide Constituents: 9% PBS, 40% Glycerol (glycerin, glycerine), 0.05% BSA, 50% Tissue culture supernatant
Purity	Tissue culture supernatant

Clonality	Monoclonal
Clone number	EPR12263
Isotype	IgG

Applications

The Abpromise guarantee Our **Abpromise guarantee** covers the use of ab171945 in the following tested applications. The application notes include recommended starting dilutions; optimal dilutions/concentrations should be determined by the end user.

Application	Abreviews	Notes
WB		1/10000 - 1/50000. Predicted molecular weight: 83 kDa.
IHC-P		1/50 - 1/100. Perform heat mediated antigen retrieval with citrate buffer pH 6 before commencing with IHC staining protocol.

Application notes Is unsuitable for Flow Cyt or IP.

Target

Function Mitochondrial GTPase that catalyzes the GTP-dependent ribosomal translocation step during translation elongation. During this step, the ribosome changes from the pre-translocational (PRE) to the post-translocational (POST) state as the newly formed A-site-bound peptidyl-tRNA and P-site-bound deacylated tRNA move to the P and E sites, respectively. Catalyzes the coordinated movement of the two tRNA molecules, the mRNA and conformational changes in the ribosome. Does not mediate the disassembly of ribosomes from messenger RNA at the termination of mitochondrial protein biosynthesis.

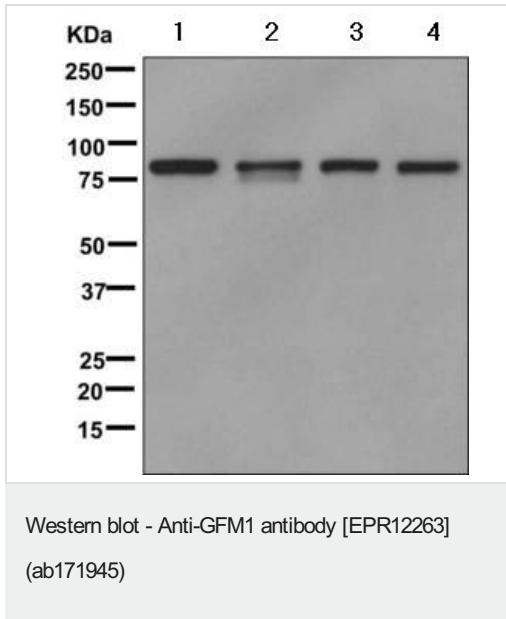
Pathway Protein biosynthesis; polypeptide chain elongation.

Involvement in disease Defects in GFM1 are the cause of combined oxidative phosphorylation deficiency type 1 (COXPD1) [MIM:609060]. It leads to early fatal progressive hepatoencephalopathy.

Sequence similarities Belongs to the GTP-binding elongation factor family. EF-G/EF-2 subfamily.

Cellular localization Mitochondrion.

Images



All lanes : Anti-GFM1 antibody [EPR12263] (ab171945) at 1/10000 dilution

Lane 1 : HeLa cell lysate

Lane 2 : NCI 460 cell line lysate

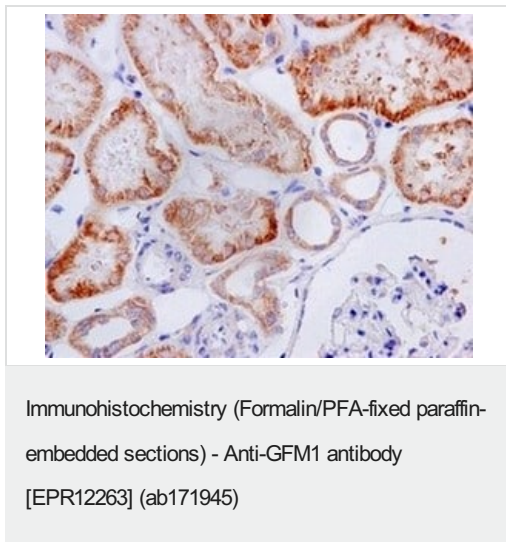
Lane 3 : U-87 MG (Human glioblastoma-astrocytoma epithelial cell line) cell lysate

Lane 4 : 293T (Human embryonic kidney epithelial cell) cell lysate

Lysates/proteins at 10 µg per lane.

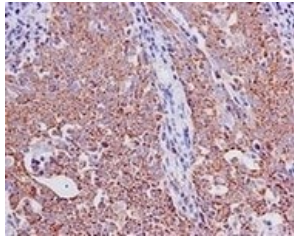
Developed using the ECL technique.

Predicted band size: 83 kDa



Immunohistochemical analysis of paraffin embedded Human kidney tissue labeling GFM1 with ab171945 at 1/50

Perform heat mediated antigen retrieval with citrate buffer pH 6 before commencing with IHC staining protocol.



Immunohistochemistry (Formalin/PFA-fixed paraffin-embedded sections) - Anti-GFM1 antibody [EPR12263] (ab171945)

Immunohistochemical analysis of paraffin embedded Human cervical carcinoma tissue labeling GFM1 with ab171945 at 1/50.

Perform heat mediated antigen retrieval with citrate buffer pH 6 before commencing with IHC staining protocol.

Why choose a recombinant antibody?



Anti-GFM1 antibody [EPR12263] (ab171945)

Please note: All products are "FOR RESEARCH USE ONLY. NOT FOR USE IN DIAGNOSTIC PROCEDURES"

Our Abpromise to you: Quality guaranteed and expert technical support

- Replacement or refund for products not performing as stated on the datasheet
- Valid for 12 months from date of delivery
- Response to your inquiry within 24 hours
- We provide support in Chinese, English, French, German, Japanese and Spanish
- Extensive multi-media technical resources to help you
- We investigate all quality concerns to ensure our products perform to the highest standards

If the product does not perform as described on this datasheet, we will offer a refund or replacement. For full details of the Abpromise, please visit <https://www.abcam.com/abpromise> or contact our technical team.

Terms and conditions

- Guarantee only valid for products bought direct from Abcam or one of our authorized distributors