




## Product datasheet

# Anti-GFPT1 antibody ab176775

[4 References](#) [2 Images](#)

### Overview

|                            |   |
|----------------------------|---|
| <b>Product name</b>        | Anti-GFPT1 antibody   |
| <b>Description</b>         | Rabbit polyclonal to GFPT1  |
| <b>Host species</b>        | Rabbit  |
| <b>Tested applications</b> | <b>Suitable for:</b> WB, IHC-P  |
| <b>Species reactivity</b>  | <b>Reacts with:</b> Human<br><b>Predicted to work with:</b> Mouse, Rat   |
| <b>Immunogen</b>           | Recombinant fragment corresponding to Human GFPT1 aa 525-681 (C terminal). (BC045641).<br>Sequence:<br>DEIQKLATELYHQKSVLIMGRGYHYATCLEGALKEITYMH<br>SEGILAGE<br>LKHGPLALVDKLMPIVIMIMRDHTYAKCQNALQQVVARQG<br>RPVVICKED<br>TETIKNTKRTIKVPHSVDCLQGILSVIPLQLLAFHLAVLRGYD<br>VDFPRNL AKSVTVE<br><br>Database link: <a href="#">Q06210-2</a>  <a href="#">Run BLAST with</a>  <a href="#">Run BLAST with</a>                                   |
| <b>Positive control</b>    | WB: HeLa and Human kidney lysates. IHC-P: Human fetal testis tissue.  |
| <b>General notes</b>       | <p>The Life Science industry has been in the grips of a reproducibility crisis for a number of years. Abcam is leading the way in addressing this with our range of recombinant monoclonal antibodies and knockout edited cell lines for gold-standard validation. Please check that this product meets your needs before purchasing.</p> <p>If you have any questions, special requirements or concerns, please send us an inquiry and/or contact our Support team ahead of purchase. Recommended alternatives for this product can be found below, along with publications, customer reviews and Q&amp;As</p> |

### Properties

|                             |   |
|-----------------------------|---|
| <b>Form</b>                 | Lyophilized:Reconstitute in 200ul Sterile Distilled Water.  |
| <b>Storage instructions</b> | Shipped at 4°C. Store at +4°C short term (1-2 weeks). Upon delivery aliquot. Store at -20°C long term. Avoid freeze / thaw cycle. |

|                       |   |
|-----------------------|---|
| <b>Storage buffer</b> | pH: 7.20<br>Preservative: 0.02% Sodium azide<br>Constituents: PBS, 1% BSA |
| <b>Purity</b>         | Immunogen affinity purified   |
| <b>Clonality</b>      | Polyclonal  |
| <b>Isotype</b>        | IgG   |

## Applications

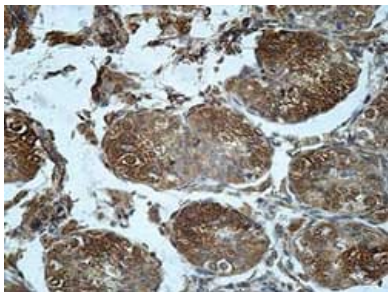
**The Abpromise guarantee** Our **Abpromise guarantee** covers the use of ab176775 in the following tested applications. The application notes include recommended starting dilutions; optimal dilutions/concentrations should be determined by the end user.

| Application | Abreviews | Notes   |
|-------------|-----------|---|
| WB          |           | 1/200 - 1/1000. Predicted molecular weight: 77 kDa. |
| IHC-P       |           | 1/100 - 1/500.                                      |

## Target

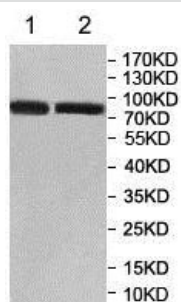
|                               |   |
|-------------------------------|---|
| <b>Function</b>               | Controls the flux of glucose into the hexosamine pathway. Most likely involved in regulating the availability of precursors for N- and O-linked glycosylation of proteins.  |
| <b>Tissue specificity</b>     | Isoform 1 is predominantly expressed in skeletal muscle. Not expressed in brain. Seems to be selectively expressed in striated muscle.  |
| <b>Pathway</b>                | Nucleotide-sugar biosynthesis; UDP-N-acetyl-alpha-D-glucosamine biosynthesis; alpha-D-glucosamine 6-phosphate from D-fructose 6-phosphate: step 1/1.  |
| <b>Involvement in disease</b> | Defects in GFPT1 are the cause of limb-girdle myasthenia with tubular aggregates (LGMTA) [MIM:610542]. A congenital myasthenic syndrome characterized by onset of proximal muscle weakness in the first decade. Individuals with this condition have a recognizable pattern of weakness of shoulder and pelvic girdle muscles, and sparing of ocular or facial muscles. EMG classically shows a decremental response to repeated nerve stimulation, a sign of neuromuscular junction dysfunction. Affected individuals show a favorable response to acetylcholinesterase (AChE) inhibitors. |
| <b>Sequence similarities</b>  | Contains 1 glutamine amidotransferase type-2 domain.<br>Contains 2 SIS domains.   |

## Images



Immunohistochemical analysis of formalin-fixed, paraffin-embedded Human fetal testis tissue labeling GFPT1 with ab176775 at 1/100 dilution.

Immunohistochemistry (Formalin/PFA-fixed paraffin-embedded sections) - Anti-GFPT1 antibody (ab176775)



**All lanes :** Anti-GFPT1 antibody (ab176775) at 1/1000 dilution

**Lane 1 :** HeLa cell lysate

**Lane 2 :** Human kidney lysate

**Predicted band size:** 77 kDa

Western blot - Anti-GFPT1 antibody (ab176775)

**Please note:** All products are "FOR RESEARCH USE ONLY. NOT FOR USE IN DIAGNOSTIC PROCEDURES"

### Our Abpromise to you: Quality guaranteed and expert technical support

- Replacement or refund for products not performing as stated on the datasheet
- Valid for 12 months from date of delivery
- Response to your inquiry within 24 hours
- We provide support in Chinese, English, French, German, Japanese and Spanish
- Extensive multi-media technical resources to help you
- We investigate all quality concerns to ensure our products perform to the highest standards

If the product does not perform as described on this datasheet, we will offer a refund or replacement. For full details of the Abpromise, please visit <https://www.abcam.com/abpromise> or contact our technical team.

## Terms and conditions

---

- Guarantee only valid for products bought direct from Abcam or one of our authorized distributors