


Anti-Ghrelin Receptor/GHS-R antibody ab188986

1 Image

Overview

Product name	Anti-Ghrelin Receptor/GHS-R antibody
Description	Rabbit polyclonal to Ghrelin Receptor/GHS-R
Host species	Rabbit
Specificity	BLAST analysis of the peptide immunogen showed no homology with other human proteins.
Tested applications	Suitable for: IHC-P
Species reactivity	Reacts with: Human Predicted to work with: Mouse, Rat, Rabbit, Horse, Guinea pig, Hamster, Cow, Dog, Pig, Xenopus laevis, Monkey, Gorilla, Common marmoset, Xenopus tropicalis 
Immunogen	Synthetic peptide within Human Ghrelin Receptor/GHS-R (internal sequence). The exact sequence is proprietary. synthetic 16 amino acid peptide from internal region Database link: Q92847
Positive control	Human skin, hair follicle tissue.
General notes	<p>The Life Science industry has been in the grips of a reproducibility crisis for a number of years. Abcam is leading the way in addressing this with our range of recombinant monoclonal antibodies and knockout edited cell lines for gold-standard validation. Please check that this product meets your needs before purchasing.</p> <p>If you have any questions, special requirements or concerns, please send us an inquiry and/or contact our Support team ahead of purchase. Recommended alternatives for this product can be found below, along with publications, customer reviews and Q&As</p>

Properties

Form	Liquid
Storage instructions	Shipped at 4°C. Store at +4°C short term (1-2 weeks). Upon delivery aliquot. Store at -20°C long term. Avoid freeze / thaw cycle.
Storage buffer	pH: 7.4 Preservative: 0.1% Sodium azide Constituent: 99% PBS
Purity	Immunogen affinity purified
Clonality	Polyclonal

Isotype

IgG

Applications

The Abpromise guarantee

Our **Abpromise guarantee** covers the use of ab188986 in the following tested applications.

The application notes include recommended starting dilutions; optimal dilutions/concentrations should be determined by the end user.

Application	Abreviews	Notes
IHC-P		Use a concentration of 1 - 3 µg/ml. Perform heat mediated antigen retrieval before commencing with IHC staining protocol.

Target

Function

Receptor for ghrelin, coupled to G-alpha-11 proteins. Stimulates growth hormone secretion. Binds also other growth hormone releasing peptides (GHRP) (e.g. Met-enkephalin and GHRP-6) as well as non-peptide, low molecular weight secretagogues (e.g. L-692,429, MK-0677, adenosine).

Tissue specificity

Pituitary and hypothalamus.

Involvement in disease

Defects in GHSR may be a cause of idiopathic short stature autosomal (ISSA) [MIM:604271]. Short stature is defined by a subnormal rate of growth.

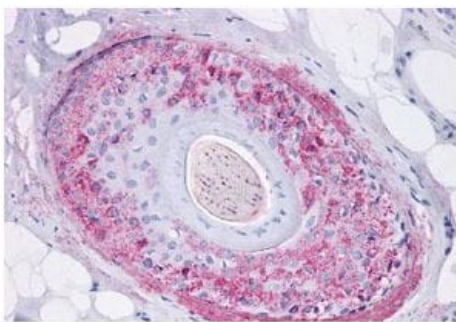
Sequence similarities

Belongs to the G-protein coupled receptor 1 family.

Cellular localization

Cell membrane.

Images



Immunohistochemical analysis of formalin-fixed, paraffin-embedded Human skin (hair follicle) tissue labeling Ghrelin Receptor/GHS-R with ab188986 at 3 µg/ml.

Immunohistochemistry (Formalin/PFA-fixed paraffin-embedded sections) - Anti-Ghrelin Receptor/GHS-R antibody (ab188986)

Please note: All products are "FOR RESEARCH USE ONLY. NOT FOR USE IN DIAGNOSTIC PROCEDURES"

Our Abpromise to you: Quality guaranteed and expert technical support

- Replacement or refund for products not performing as stated on the datasheet

- Valid for 12 months from date of delivery
- Response to your inquiry within 24 hours
- We provide support in Chinese, English, French, German, Japanese and Spanish
- Extensive multi-media technical resources to help you
- We investigate all quality concerns to ensure our products perform to the highest standards

If the product does not perform as described on this datasheet, we will offer a refund or replacement. For full details of the Abpromise, please visit <https://www.abcam.com/abpromise> or contact our technical team.

Terms and conditions

- Guarantee only valid for products bought direct from Abcam or one of our authorized distributors