

## Product datasheet

# Anti-GILT antibody ab232915

[1 References](#) [9 Images](#)

### Overview

---

<b>Product name</b>	Anti-GILT antibody
<b>Description</b>	Rabbit polyclonal to GILT
<b>Host species</b>	Rabbit
<b>Tested applications</b>	<b>Suitable for:</b> ICC/IF, IHC-P, WB
<b>Species reactivity</b>	<b>Reacts with:</b> Human
<b>Immunogen</b>	Recombinant full length protein (His-T7-tag) corresponding to Human GILT aa 1 to the C-terminus. (Expressed in E.coli). Database link: <a href="#">P13284</a> <a href="#">Run BLAST with</a> <a href="#">Run BLAST with</a>
<b>Positive control</b>	WB: Raji cell lysate; Recombinant human GILT protein. IHC-P: Human lung, prostate cancer, glioma, stomach, prostate and colorectal cancer tissues. ICC/IF: U-2 OS cells.
<b>General notes</b>	<p>The Life Science industry has been in the grips of a reproducibility crisis for a number of years. Abcam is leading the way in addressing this with our range of recombinant monoclonal antibodies and knockout edited cell lines for gold-standard validation. Please check that this product meets your needs before purchasing.</p> <p>If you have any questions, special requirements or concerns, please send us an inquiry and/or contact our Support team ahead of purchase. Recommended alternatives for this product can be found below, along with publications, customer reviews and Q&amp;As</p>

### Properties

---

<b>Form</b>	Liquid
<b>Storage instructions</b>	Shipped at 4°C. Store at +4°C short term (1-2 weeks). Upon delivery aliquot. Store at -20°C long term. Avoid freeze / thaw cycle.
<b>Storage buffer</b>	pH: 7.40 Preservative: 0.02% Sodium azide Constituents: 44.12% PBS, 55.77% Glycerol (glycerin, glycerine)
<b>Purity</b>	Immunogen affinity purified
<b>Purification notes</b>	ab232915 was purified by antigen-specific affinity chromatography followed by Protein A affinity chromatography.
<b>Clonality</b>	Polyclonal

Isotype

IgG

## Applications

---

### The Abpromise guarantee

Our **Abpromise guarantee** covers the use of ab232915 in the following tested applications.

The application notes include recommended starting dilutions; optimal dilutions/concentrations should be determined by the end user.

Application	Abreviews	Notes
ICC/IF		Use a concentration of 5 - 20 µg/ml.
IHC-P		Use a concentration of 5 - 20 µg/ml.
WB		Use a concentration of 0.5 - 5 µg/ml. Predicted molecular weight: 28 kDa.

## Target

---

### Function

Lysosomal thiol reductase that can reduce protein disulfide bonds. May facilitate the complete unfolding of proteins destined for lysosomal degradation. Plays an important role in antigen processing. Facilitates the generation of MHC class II-restricted epitopes from disulfide bond-containing antigen by the endocytic reduction of disulfide bonds (By similarity). Facilitates also MHC class I-restricted recognition of exogenous antigens containing disulfide bonds by CD8+ T-cells or crosspresentation.

### Sequence similarities

Belongs to the GILT family.

### Post-translational modifications

N-glycosylated. Sugar chains contain mannose-6-phosphate.

Synthesized as a 35 kDa precursor which is then processed into the mature 30 kDa form via cleavage of N-terminal and C-terminal propeptides. Processing of the precursor is mediated by multiple lysosomal proteases.

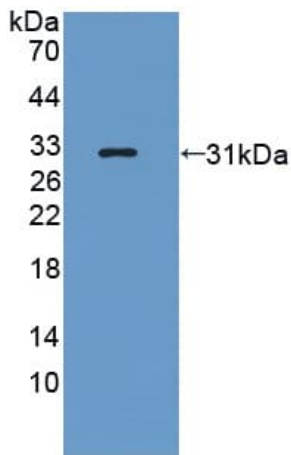
### Cellular localization

Secreted. Lysosome.

---

## Images

---



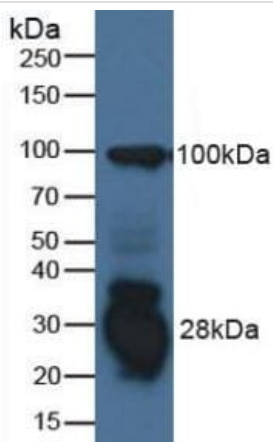
Western blot - Anti-GILT antibody (ab232915)

Anti-GILT antibody (ab232915) at 3  $\mu$ g/ml + Recombinant human GILT protein

**Secondary**

HRP-Linked Guinea pig anti-rabbit at 1/2000 dilution

**Predicted band size:** 28 kDa



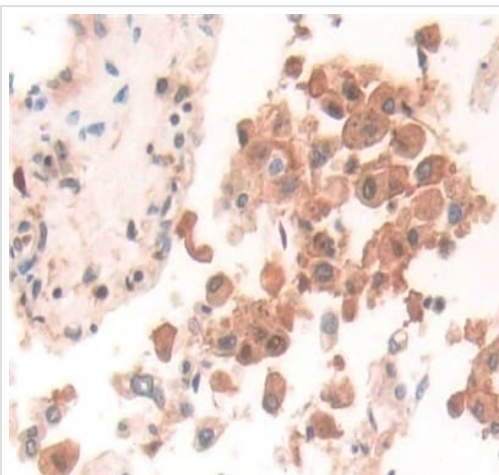
Western blot - Anti-GILT antibody (ab232915)

Anti-GILT antibody (ab232915) at 3  $\mu$ g/ml + Raji (human Burkitt's lymphoma cell line) cell lysate

**Secondary**

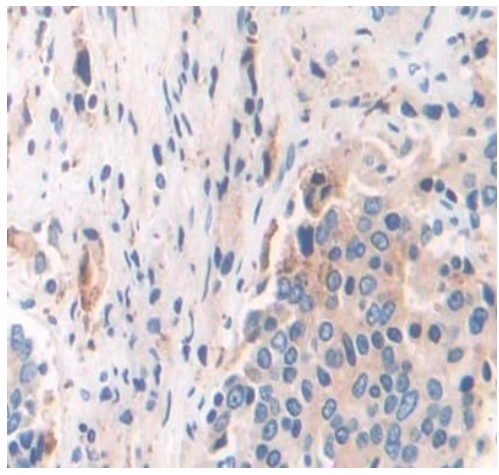
HRP-Linked Guinea pig anti-rabbit at 1/2000 dilution

**Predicted band size:** 28 kDa



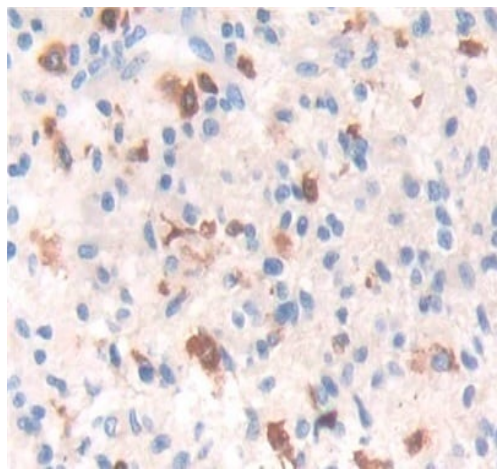
Immunohistochemistry (Formalin/PFA-fixed paraffin-embedded sections) - Anti-GILT antibody (ab232915)

Paraffin-embedded human lung tissue stained for GILT using ab232915 at 20  $\mu$ g/ml in immunohistochemical analysis. DAB staining.



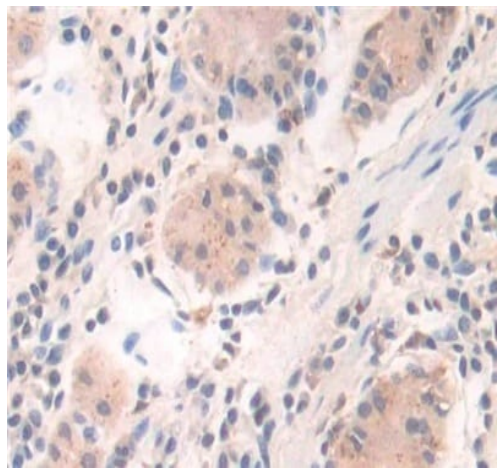
Paraffin-embedded human prostate cancer stained for GILT using ab232915 at 20  $\mu\text{g/ml}$  in immunohistochemical analysis. DAB staining.

Immunohistochemistry (Formalin/PFA-fixed paraffin-embedded sections) - Anti-GILT antibody (ab232915)



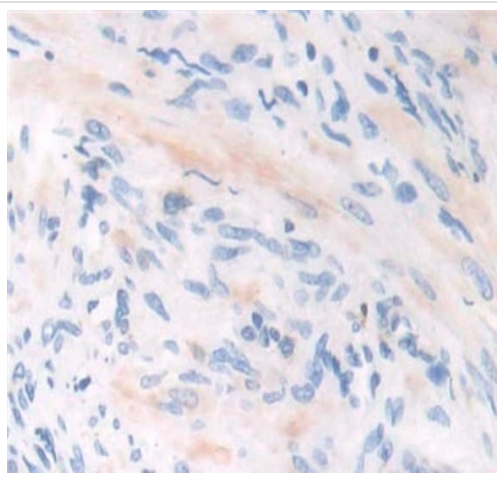
Paraffin-embedded human glioma tissue stained for GILT using ab232915 at 20  $\mu\text{g/ml}$  in immunohistochemical analysis. DAB staining.

Immunohistochemistry (Formalin/PFA-fixed paraffin-embedded sections) - Anti-GILT antibody (ab232915)



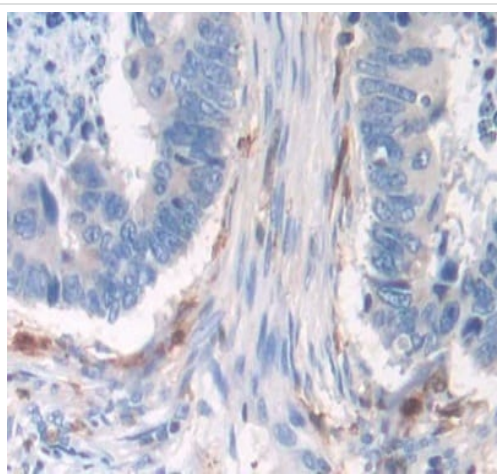
Immunohistochemistry (Formalin/PFA-fixed paraffin-embedded sections) - Anti-GILT antibody (ab232915)

Paraffin-embedded human stomach tissue stained for GILT using ab232915 at 20 µg/ml in immunohistochemical analysis. DAB staining.



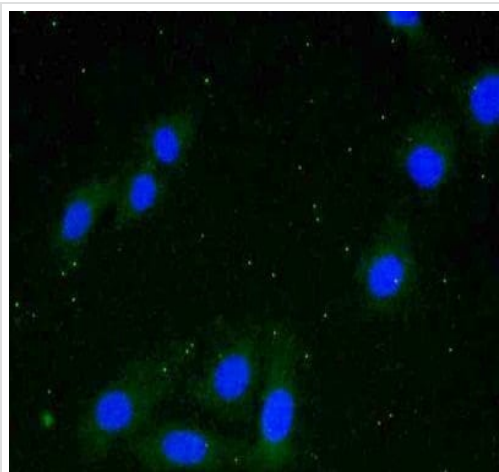
Immunohistochemistry (Formalin/PFA-fixed paraffin-embedded sections) - Anti-GILT antibody (ab232915)

Paraffin-embedded human prostate tissue stained for GILT using ab232915 at 20 µg/ml in immunohistochemical analysis. DAB staining.



Immunohistochemistry (Formalin/PFA-fixed paraffin-embedded sections) - Anti-GILT antibody (ab232915)

Paraffin-embedded human colorectal cancer tissue stained for GILT using ab232915 at 20 µg/ml in immunohistochemical analysis. DAB staining.



U-2 OS (human bone osteosarcoma epithelial cell line) cells stained for GILT (green) using ab232915 at 20 µg/ml in ICC/IF, followed by FITC staining.

Immunocytochemistry/ Immunofluorescence - Anti-GILT antibody (ab232915)

**Please note:** All products are "FOR RESEARCH USE ONLY. NOT FOR USE IN DIAGNOSTIC PROCEDURES"

### Our Abpromise to you: Quality guaranteed and expert technical support

---

- Replacement or refund for products not performing as stated on the datasheet
- Valid for 12 months from date of delivery
- Response to your inquiry within 24 hours
- We provide support in Chinese, English, French, German, Japanese and Spanish
- Extensive multi-media technical resources to help you
- We investigate all quality concerns to ensure our products perform to the highest standards

If the product does not perform as described on this datasheet, we will offer a refund or replacement. For full details of the Abpromise, please visit <https://www.abcam.com/abpromise> or contact our technical team.

### Terms and conditions

---

- Guarantee only valid for products bought direct from Abcam or one of our authorized distributors