

Product datasheet

Anti-GIP antibody [EPR20410] **ab209792**

Recombinant **RabMAb**

[2 References](#) [8 Images](#)

Overview

Product name	Anti-GIP antibody [EPR20410]
Description	Rabbit monoclonal [EPR20410] to GIP
Host species	Rabbit
Tested applications	Suitable for: mIHC, IHC-Fr, IHC-P
Species reactivity	Reacts with: Mouse, Rat, Human
Immunogen	Synthetic peptide. This information is proprietary to Abcam and/or its suppliers.
Positive control	IHC-P: Human pancreas and duodenum tissues; Mouse pancreas and small intestine tissues; Rat pancreas tissue. IHC-Fr: Mouse pancreas tissue. mIHC: Human pancreas tissue.
General notes	<p>This product is a recombinant monoclonal antibody, which offers several advantages including:</p> <ul style="list-style-type: none"> - High batch-to-batch consistency and reproducibility - Improved sensitivity and specificity - Long-term security of supply - Animal-free production <p>For more information see here.</p> <p>Our RabMAb[®] technology is a patented hybridoma-based technology for making rabbit monoclonal antibodies. For details on our patents, please refer to RabMAb[®] patents.</p>

Properties

Form	Liquid
Storage instructions	Shipped at 4°C. Store at +4°C short term (1-2 weeks). Upon delivery aliquot. Store at -20°C long term. Avoid freeze / thaw cycle.
Storage buffer	<p>pH: 7.2</p> <p>Preservative: 0.01% Sodium azide</p> <p>Constituents: 59% PBS, 40% Glycerol (glycerin, glycerine), 0.05% BSA</p>
Purity	Protein A purified
Clonality	Monoclonal
Clone number	EPR20410
Isotype	IgG

Applications

The Abpromise guarantee

Our **Abpromise guarantee** covers the use of ab209792 in the following tested applications.

The application notes include recommended starting dilutions; optimal dilutions/concentrations should be determined by the end user.

Application	Abreviews	Notes
mlHC		Use at an assay dependent concentration.
IHC-Fr		1/100. Antigen retrieval: Heated citrate solution (10mM citrate pH 6.0 + 0.05% Tween-20).
IHC-P		1/2000. Perform heat mediated antigen retrieval with Tris/EDTA buffer pH 9.0 before commencing with IHC staining protocol.

Target

Function

Potent stimulator of insulin secretion and relatively poor inhibitor of gastric acid secretion.

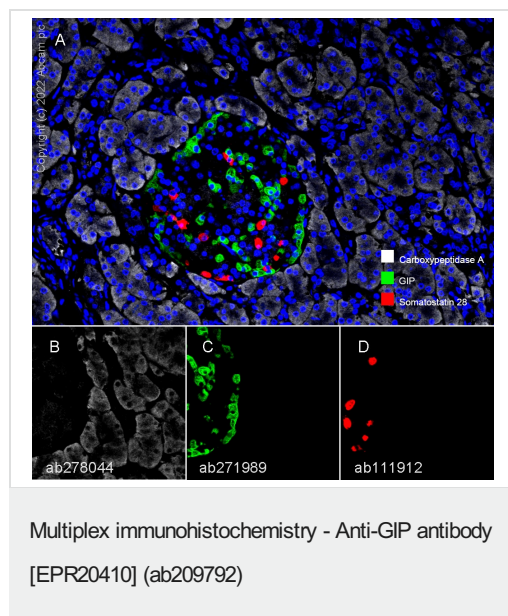
Sequence similarities

Belongs to the glucagon family.

Cellular localization

Secreted.

Images



Fluorescence multiplex immunohistochemical analysis of the human pancreas (Formalin/PFA-fixed paraffin-embedded sections).

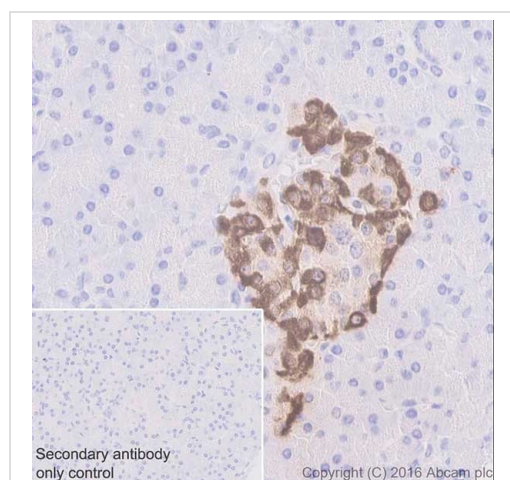
Panel A: merged staining of anti-Carboxypeptidase A (**ab278044**, gray; Opal™690), anti-GIP (**ab271989**, green; Opal™520) and anti-Somatostatin 28 (**ab111912**, red; Opal™570) on human pancreas. Panel B: anti-Carboxypeptidase A stained on acinar cells. Panel C: anti-GIP stained on alpha cells. Panel D: anti-Somatostatin 28 stained on delta cells. Opal Polymer HRP Ms + Rb was used as a secondary antibody.

The section was incubated in three rounds of staining: in the order of **ab278044** at 1/4000 dilution (0.135 µg/ml), **ab271989** at 1/4000 dilution (0.27 µg/ml) and **ab111912** at 1/9000 dilution (0.068 µg/ml) for 30 mins at room temperature. Each round was followed by a separate fluorescent tyramide signal amplification system.

The immunostaining was performed on a Leica Biosystems BOND® RX instrument with an Opal™ 4-color kit. Image acquisition was performed with Leica SP8 confocal microscope.

Heat mediated antigen retrieval with Tris-EDTA buffer (pH 9.0, epitope retrieval solution2) for 20 mins. DAPI (blue) was used as a nuclear counter stain.

This data was developed using **ab271989**, the same antibody clone in a different buffer formulation.



Immunohistochemistry (Formalin/PFA-fixed paraffin-embedded sections) - Anti-GIP antibody [EPR20410] (ab209792)

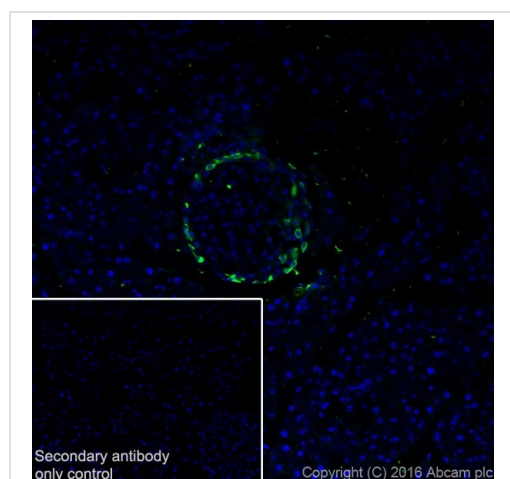
Immunohistochemical analysis of paraffin-embedded human pancreas tissue labeling GIP with ab209792 at 1/2000 dilution, followed by Goat Anti-Rabbit IgG H&L (HRP) Ready to use.

Cytoplasmic staining on alpha cells of human pancreas islet is observed (PMID: 4574902).

Counter stained with Hematoxylin.

Secondary antibody only control: Used PBS instead of primary antibody, secondary antibody is Goat Anti-Rabbit IgG H&L (HRP) Ready to use.

Perform heat mediated antigen retrieval with Tris/EDTA buffer pH 9.0 before commencing with IHC staining protocol.



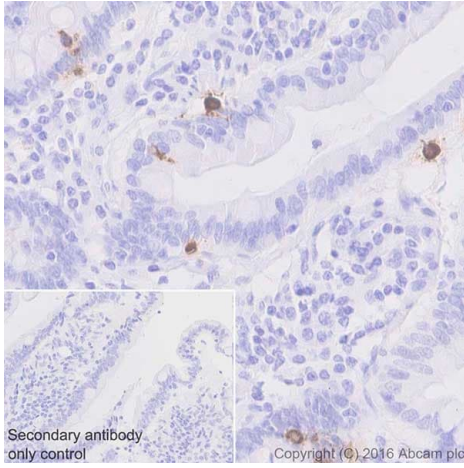
Immunohistochemistry (Frozen sections) - Anti-GIP antibody [EPR20410] (ab209792)

Immunohistochemical analysis of 4% paraformaldehyde-fixed, 0.2% Triton X-100 permeabilized frozen mouse pancreas tissue labeling GIP with ab209792 at 1/100 dilution, followed by Goat anti-rabbit IgG (Alexa Fluor® 488) (**ab150077**) secondary antibody at 1/1000 dilution (green).

Cytoplasmic staining on alpha cells of mouse pancreas islet is observed.

The nuclear counterstain is DAPI (blue).

Secondary antibody only control: Used PBS instead of primary antibody, secondary antibody is Goat anti-rabbit IgG (Alexa Fluor® 488) (**ab150077**) at 1/1000 dilution.



Immunohistochemistry (Formalin/PFA-fixed paraffin-embedded sections) - Anti-GIP antibody
[EPR20410] (ab209792)

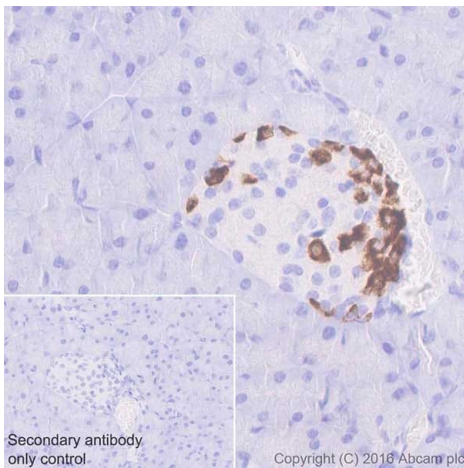
Immunohistochemical analysis of paraffin-embedded human duodenum tissue labeling GIP with ab209792 at 1/2000 dilution, followed by Goat Anti-Rabbit IgG H&L (HRP) Ready to use.

Sporadic and cytoplasmic staining on human duodenum is observed (PMID: 4574902).

Counter stained with Hematoxylin.

Secondary antibody only control: Used PBS instead of primary antibody, secondary antibody is Goat Anti-Rabbit IgG H&L (HRP) Ready to use.

Perform heat mediated antigen retrieval with Tris/EDTA buffer pH 9.0 before commencing with IHC staining protocol.



Immunohistochemistry (Formalin/PFA-fixed paraffin-embedded sections) - Anti-GIP antibody
[EPR20410] (ab209792)

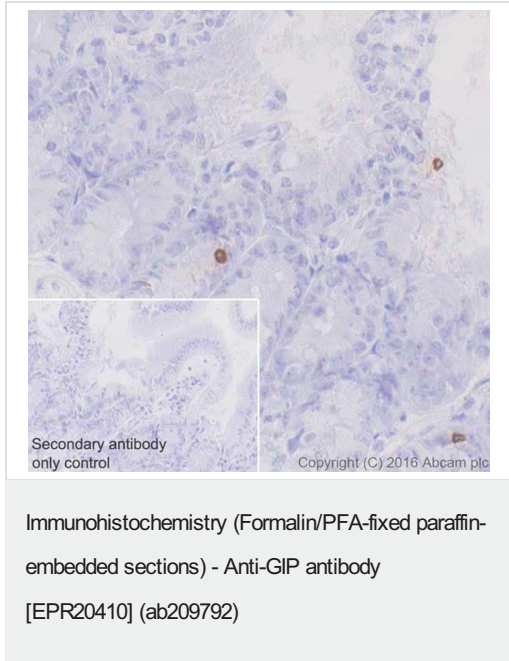
Immunohistochemical analysis of paraffin-embedded mouse pancreas tissue labeling GIP with ab209792 at 1/2000 dilution, followed by Goat Anti-Rabbit IgG H&L (HRP) Ready to use.

Cytoplasmic staining on alpha cells of mouse pancreas islet is observed (PMID: 4574902).

Counter stained with Hematoxylin.

Secondary antibody only control: Used PBS instead of primary antibody, secondary antibody is Goat Anti-Rabbit IgG H&L (HRP) Ready to use.

Perform heat mediated antigen retrieval with Tris/EDTA buffer pH 9.0 before commencing with IHC staining protocol.



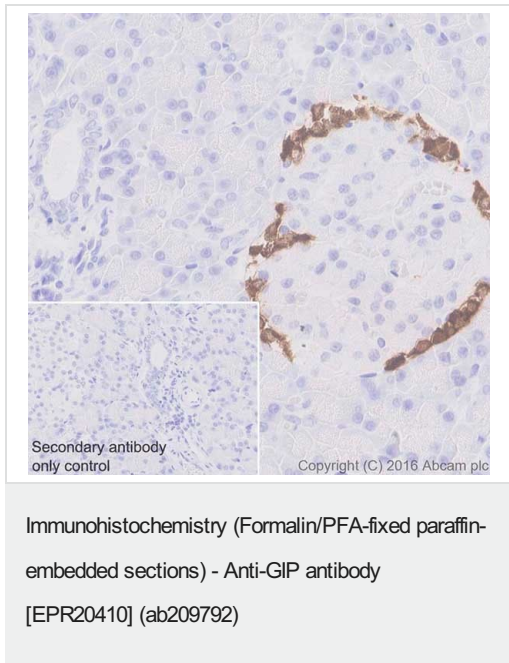
Immunohistochemical analysis of paraffin-embedded mouse small intestine tissue labeling GIP with ab209792 at 1/2000 dilution, followed by Goat Anti-Rabbit IgG H&L (HRP) Ready to use.

Sporadic and cytoplasmic staining on mouse small intestine is observed (PMID: 4574902).

Counter stained with Hematoxylin.

Secondary antibody only control: Used PBS instead of primary antibody, secondary antibody is Goat Anti-Rabbit IgG H&L (HRP) Ready to use.

Perform heat mediated antigen retrieval with Tris/EDTA buffer pH 9.0 before commencing with IHC staining protocol.



Immunohistochemical analysis of paraffin-embedded rat pancreas tissue labeling GIP with ab209792 at 1/2000 dilution, followed by Goat Anti-Rabbit IgG H&L (HRP) Ready to use.





Cytoplasmic staining on alpha cells of rat pancreas islet is observed (PMID: 4574902).

Counter stained with Hematoxylin.

Secondary antibody only control: Used PBS instead of primary antibody, secondary antibody is Goat Anti-Rabbit IgG H&L (HRP) Ready to use.

Perform heat mediated antigen retrieval with Tris/EDTA buffer pH 9.0 before commencing with IHC staining protocol.

Why choose a recombinant antibody?

 <p>Research with confidence Consistent and reproducible results</p>	 <p>Long-term and scalable supply Recombinant technology</p>
 <p>Success from the first experiment Confirmed specificity</p>	 <p>Ethical standards compliant Animal-free production</p>

Anti-GIP antibody [EPR20410] (ab209792)

Please note: All products are "FOR RESEARCH USE ONLY. NOT FOR USE IN DIAGNOSTIC PROCEDURES"

Our Abpromise to you: Quality guaranteed and expert technical support

- Replacement or refund for products not performing as stated on the datasheet
- Valid for 12 months from date of delivery
- Response to your inquiry within 24 hours
- We provide support in Chinese, English, French, German, Japanese and Spanish
- Extensive multi-media technical resources to help you
- We investigate all quality concerns to ensure our products perform to the highest standards

If the product does not perform as described on this datasheet, we will offer a refund or replacement. For full details of the Abpromise, please visit <https://www.abcam.com/abpromise> or contact our technical team.

Terms and conditions

- Guarantee only valid for products bought direct from Abcam or one of our authorized distributors