

Product datasheet

Anti-GIT1 antibody [EPR10367] ab156001


KO VALIDATED

Recombinant

RabMAb

[1 Abreviews](#) [2 References](#) [4 Images](#)

Overview

Product name	Anti-GIT1 antibody [EPR10367]
Description	Rabbit monoclonal [EPR10367] to GIT1
Host species	Rabbit
Tested applications	Suitable for: Flow Cyt (Intra), WB Unsuitable for: ICC/IF, IHC-P or IP
Species reactivity	Reacts with: Human Predicted to work with: Mouse, Rat 
Immunogen	Synthetic peptide. This information is proprietary to Abcam and/or its suppliers.
Positive control	WB: SH-SY5Y, HeLa, 293T, brain nuclear extract and fetal brain lysates. Flow Cyt (intra): 293T cells.
General notes	<p>This product is a recombinant monoclonal antibody, which offers several advantages including:</p> <ul style="list-style-type: none"> - High batch-to-batch consistency and reproducibility - Improved sensitivity and specificity - Long-term security of supply - Animal-free production <p>For more information see here.</p> <p>Our RabMAb[®] technology is a patented hybridoma-based technology for making rabbit monoclonal antibodies. For details on our patents, please refer to RabMAb[®] patents.</p>

Properties

Form	Liquid
Storage instructions	Shipped at 4°C. Store at -20°C.
Storage buffer	pH: 7.2 Preservative: 0.01% Sodium azide Constituents: 9% PBS, 40% Glycerol (glycerin, glycerine), 0.05% BSA, 50% Tissue culture supernatant
Purity	Tissue culture supernatant
Clonality	Monoclonal

Clone number	EPR10367
Isotype	IgG

Applications

The Abpromise guarantee Our **Abpromise guarantee** covers the use of ab156001 in the following tested applications. The application notes include recommended starting dilutions; optimal dilutions/concentrations should be determined by the end user.

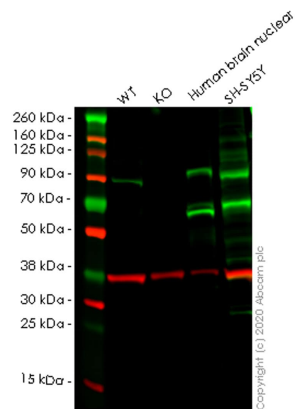
Application	Abreviews	Notes
Flow Cyt (Intra)		1/100 - 1/500. ab172730 - Rabbit monoclonal IgG, is suitable for use as an isotype control with this antibody.
WB		1/1000 - 1/10000. Predicted molecular weight: 84 kDa.

Application notes Is unsuitable for ICC/IF, IHC-P or IP.

Target

Function	GTPase-activating protein for the ADP ribosylation factor family. May serve as a scaffold to bring together molecules to form signaling modules controlling vesicle trafficking, adhesion and cytoskeletal organization. Increases the speed of cell migration, as well as the size and rate of formation of protrusions, possibly by targeting PAK1 to adhesions and the leading edge of lamellipodia. Sequesters inactive non-tyrosine-phosphorylated paxillin in cytoplasmic complexes.
Sequence similarities	Contains 3 ANK repeats. Contains 1 Arf-GAP domain.
Domain	The paxillin-binding domain is masked in the full-length protein and is regulated by ARHGEF6.
Post-translational modifications	Phosphorylated on tyrosine residues by PTK2 and SRC in growing fibroblasts. Tyrosine-phosphorylation is increased following cell spreading on fibronectin, decreased in cells arrested in mitosis and increased in the ensuing G1 phase.
Cellular localization	Cytoplasm. Cycles between at least 3 distinct intracellular compartments, including focal adhesions, cytoplasmic complexes and membrane protrusions. During cell migration, when cells detach, moves from the adhesions into the cytoplasmic complexes towards the leading edge, while, when cells adhere, it is found in vinculin-containing adhesions. Recruitment to adhesions may be mediated by active tyrosine-phosphorylated paxillin.

Images



Western blot - Anti-GIT1 antibody [EPR10367]
(ab156001)

All lanes : Anti-GIT1 antibody [EPR10367] (ab156001) at 1/1000 dilution

Lane 1 : Wild-type HeLa (Human epithelial cell line from cervix adenocarcinoma) whole cell lysate

Lane 2 : G1T1 knockout HeLa (Human epithelial cell line from cervix adenocarcinoma) whole cell lysate

Lane 3 : Human brain tissue nuclear fraction lysate

Lane 4 : SH-SY5Y (Human neuroblastoma cell line from bone marrow) whole cell lysate

Lysates/proteins at 20 µg per lane.

Secondary

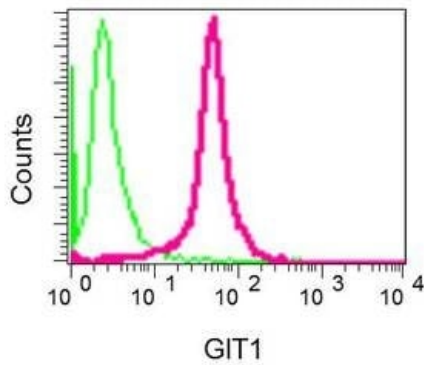
All lanes : Goat anti-Rabbit IgG H&L (IRDye® 800CW) preadsorbed ([ab216773](#)) at 1/10000 dilution

Predicted band size: 84 kDa

Observed band size: 98 kDa

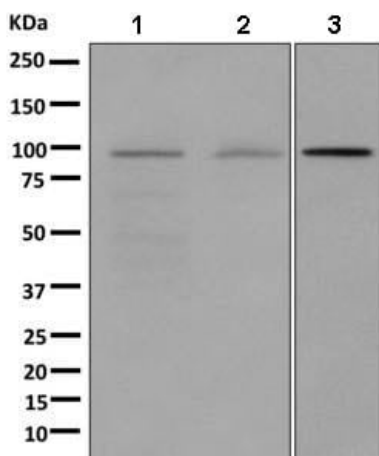
Lanes 1-4: Merged signal (red and green). Green - ab156001 observed at 98 kDa. Red - loading control [ab8245](#) observed at 36 kDa.

ab156001 Anti-GIT1 antibody [EPR10367] was shown to specifically react with GIT1 in wild-type HeLa cells. Loss of signal was observed when knockout cell line [ab265230](#) (knockout cell lysate [ab257965](#)) was used. Wild-type and GIT1 knockout samples were subjected to SDS-PAGE. ab156001 and Anti-GAPDH antibody [6C5] - Loading Control ([ab8245](#)) were incubated overnight at 4°C at 1 in 1000 dilution and 1 in 20000 dilution respectively. Blots were developed with Goat anti-Rabbit IgG H&L (IRDye® 800CW) preadsorbed ([ab216773](#)) and Goat anti-Mouse IgG H&L (IRDye® 680RD) preadsorbed ([ab216776](#)) secondary antibodies at 1 in 20000 dilution for 1 hour at room temperature before imaging.



Flow Cytometry (Intracellular) - Anti-GIT1 antibody
[EPR10367] (ab156001)

Intracellular flow cytometric analysis of permeabilized 293T cells labeling GIT1 with ab156001 at 1/100 dilution (red) compared to a rabbit IgG negative control (green).



Western blot - Anti-GIT1 antibody [EPR10367]
(ab156001)

All lanes : Anti-GIT1 antibody [EPR10367] (ab156001) at 1/1000 dilution

Lane 1 : HeLa cell lysate

Lane 2 : 293T cell lysate

Lane 3 : Fetal brain lysate

Lysates/proteins at 10 µg per lane.

Secondary

All lanes : HRP labelled goat anti-rabbit at 1/2000 dilution

Predicted band size: 84 kDa

Why choose a
recombinant antibody?



**Research with
confidence**
Consistent and
reproducible results



**Long-term and
scalable supply**
Recombinant
technology



**Success from the
first experiment**
Confirmed
specificity



**Ethical standards
compliant**
Animal-free
production

Anti-GIT1 antibody [EPR10367] (ab156001)

Our Abpromise to you: Quality guaranteed and expert technical support

- Replacement or refund for products not performing as stated on the datasheet
- Valid for 12 months from date of delivery
- Response to your inquiry within 24 hours
- We provide support in Chinese, English, French, German, Japanese and Spanish
- Extensive multi-media technical resources to help you
- We investigate all quality concerns to ensure our products perform to the highest standards

If the product does not perform as described on this datasheet, we will offer a refund or replacement. For full details of the Abpromise, please visit <https://www.abcam.com/abpromise> or contact our technical team.

Terms and conditions

- Guarantee only valid for products bought direct from Abcam or one of our authorized distributors