




Product datasheet

Anti-GJA3/Cx46 antibody [11H16L33] ab203564

Recombinant

3 Images

Overview

Product name	Anti-GJA3/Cx46 antibody [11H16L33]
Description	Rabbit monoclonal [11H16L33] to GJA3/Cx46
Host species	Rabbit
Tested applications	Suitable for: WB, IHC-P
Species reactivity	Reacts with: Mouse Predicted to work with: Rat 
Immunogen	Synthetic peptide corresponding to Mouse GJA3/Cx46 aa 100-200. Database link: Q64448  Run BLAST with  Run BLAST with
Positive control	Mouse lens lysate; Mouse lens tissue.

Properties

Form	Liquid
Storage instructions	Shipped at 4°C. Store at +4°C short term (1-2 weeks). Upon delivery aliquot. Store at -20°C long term. Avoid freeze / thaw cycle.
Storage buffer	Preservative: 0.09% Sodium azide Constituent: 99% PBS
Purity	Protein A purified
Clonality	Monoclonal
Clone number	11H16L33
Isotype	IgG

Applications

The Abpromise guarantee Our [Abpromise guarantee](#) covers the use of ab203564 in the following tested applications. The application notes include recommended starting dilutions; optimal dilutions/concentrations should be determined by the end user.

Application	Abreviews	Notes
WB		Use a concentration of 1 - 3 µg/ml.
IHC-P		Use a concentration of 0.5 - 2 µg/ml.

Target

Function

One gap junction consists of a cluster of closely packed pairs of transmembrane channels, the connexons, through which materials of low MW diffuse from one cell to a neighboring cell.

Involvement in disease

Defects in GJA3 are the cause of cataract zonular pulverulent cataract type 3 (CZP3) [MIM:601885]. A form of zonular cataract. Zonular or lamellar cataracts are opacities, broad or narrow, usually consisting of powdery white dots affecting only certain layers or zones between the cortex and nucleus of an otherwise clear lens. The opacity may be so dense as to render the entire central region of the lens completely opaque, or so translucent that vision is hardly if at all impeded. Zonular cataracts generally do not involve the embryonic nucleus, though sometimes they involve the fetal nucleus. Usually sharply separated from a clear cortex outside them, they may have projections from their outer edges known as riders or spokes.

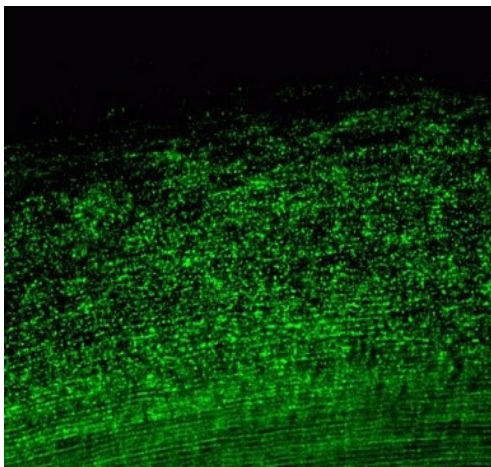
Sequence similarities

Belongs to the connexin family. Alpha-type (group II) subfamily.

Cellular localization

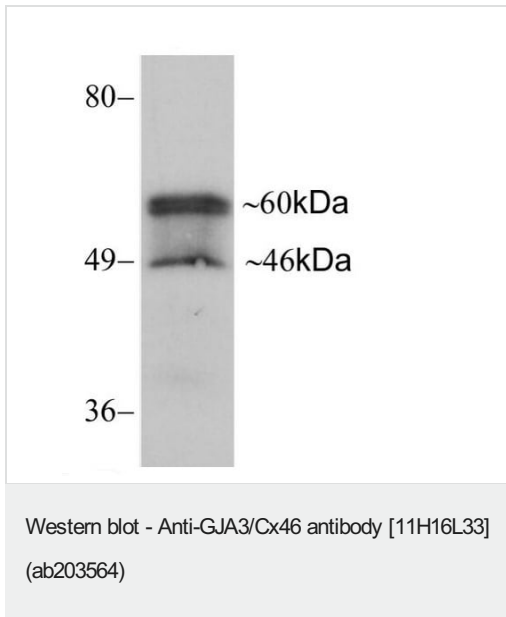
Cell membrane. Cell junction > gap junction.

Images







Immunohistochemical analysis of formalin-fixed, paraffin-embedded mouse lens tissue labeling GJA3/Cx46 with ab203564 at 1 µg/mL.

Immunohistochemistry (Formalin/PFA-fixed paraffin-embedded sections) - Anti-GJA3/Cx46 antibody [11H16L33] (ab203564)



Anti-GJA3/Cx46 antibody [11H16L33] (ab203564) at 2 µg/ml + mouse lens lysate

Why choose a recombinant antibody?

 <p>Research with confidence Consistent and reproducible results</p>	 <p>Long-term and scalable supply Recombinant technology</p>
 <p>Success from the first experiment Confirmed specificity</p>	 <p>Ethical standards compliant Animal-free production</p>

Anti-GJA3/Cx46 antibody [11H16L33] (ab203564)

Please note: All products are "FOR RESEARCH USE ONLY. NOT FOR USE IN DIAGNOSTIC PROCEDURES"

Our Abpromise to you: Quality guaranteed and expert technical support

- Replacement or refund for products not performing as stated on the datasheet
- Valid for 12 months from date of delivery
- Response to your inquiry within 24 hours
- We provide support in Chinese, English, French, German, Japanese and Spanish
- Extensive multi-media technical resources to help you

- We investigate all quality concerns to ensure our products perform to the highest standards

If the product does not perform as described on this datasheet, we will offer a refund or replacement. For full details of the Abpromise, please visit <https://www.abcam.com/abpromise> or contact our technical team.

Terms and conditions

- Guarantee only valid for products bought direct from Abcam or one of our authorized distributors