

Product datasheet

Anti-Gli1 antibody [EPR4523] ab134906

Recombinant RabMAb

★★★★★ **2 Abreviews** **30 References** [5 Images](#)

Overview

Product name	Anti-Gli1 antibody [EPR4523]
Description	Rabbit monoclonal [EPR4523] to Gli1
Host species	Rabbit
Tested applications	Suitable for: WB Unsuitable for: Flow Cyt, ICC/IF, IHC-P or IP
Species reactivity	Reacts with: Human
Immunogen	Synthetic peptide within Human Gli1 aa 1-100. The exact sequence is proprietary.
Positive control	RMS13 and A673 cell lysates; Human brain and testis tissues; A673 cells.
General notes	<p>This antibody was developed as part of a collaboration with the lab of Martin Fernandez-Zapico at the Mayo Clinic.</p> <p>This product is a recombinant monoclonal antibody, which offers several advantages including:</p> <ul style="list-style-type: none"> - High batch-to-batch consistency and reproducibility - Improved sensitivity and specificity - Long-term security of supply - Animal-free production <p>For more information see here.</p> <p>Our RabMAb[®] technology is a patented hybridoma-based technology for making rabbit monoclonal antibodies. For details on our patents, please refer to RabMAb[®] patents.</p> <p>Mouse, Rat: We have preliminary internal testing data to indicate this antibody may not react with these species. Please contact us for more information.</p>

Properties

Form	Liquid
Storage instructions	Shipped at 4°C. Store at -20°C.
Storage buffer	pH: 7.2 Preservative: 0.01% Sodium azide Constituents: 40% Glycerol, 0.05% BSA, 59% PBS
Purity	Protein A purified

Clonality	Monoclonal
Clone number	EPR4523
Isotype	IgG

Applications

The Abpromise guarantee Our **Abpromise guarantee** covers the use of ab134906 in the following tested applications. The application notes include recommended starting dilutions; optimal dilutions/concentrations should be determined by the end user.

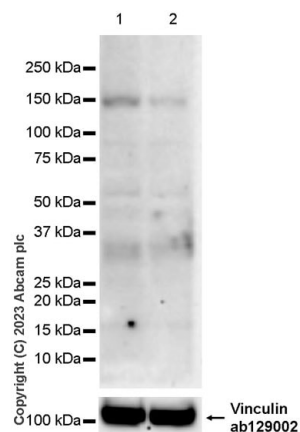
Application	Abreviews	Notes
WB	★★★★★ (2)	1/100 - 1/1000. Predicted molecular weight: 118 kDa.

Application notes Is unsuitable for Flow Cyt, ICC/IF, IHC-P or IP.

Target

Function	Acts as a transcriptional activator. May regulate the transcription of specific genes during normal development. May play a role in craniofacial development and digital development, as well as development of the central nervous system and gastrointestinal tract. Mediates SHH signaling and thus cell proliferation and differentiation.
Tissue specificity	Testis, myometrium and fallopian tube. Also expressed in the brain with highest expression in the cerebellum, optic nerve and olfactory tract.
Sequence similarities	Belongs to the GLI C2H2-type zinc-finger protein family. Contains 5 C2H2-type zinc fingers.
Post-translational modifications	Phosphorylated in vitro by ULK3.
Cellular localization	Cytoplasm. Nucleus. Tethered in the cytoplasm by binding to SUFU. Activation and translocation to the nucleus is promoted by interaction with STK36. Phosphorylation by ULK3 may promote nuclear localization. Translocation to the nucleus is promoted by interaction with ZIC1.

Images



Western blot - Anti-Gli1 antibody [EPR4523]
(ab134906)

All lanes : Anti-Gli1 antibody [EPR4523] (ab134906) at 1/1000 dilution

Lane 1 : RMS 13 (human rhabdomyosarcoma fibroblast)

transfected with scrambled siRNA control whole cell lysate

Lane 2 : RMS 13 (human rhabdomyosarcoma fibroblast)

transfected with siRNA specifically targeting Gli1 whole cell lysate

Lysates/proteins at 20 µg per lane.

Secondary

All lanes : Goat Anti-Rabbit IgG H&L (HRP) ([ab97051](#)) at 1/20000 dilution

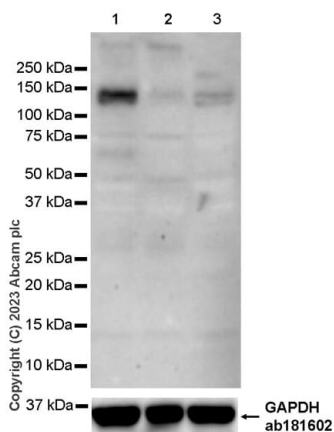
Predicted band size: 118 kDa

Observed band size: 150 kDa

Exposure time: 180 seconds

Diluting and blocking buffer and concentration: 5% NFDM/TBST

This blot was developed using a high sensitivity ECL substrate.



Western blot - Anti-Gli1 antibody [EPR4523]
(ab134906)

All lanes : Anti-Gli1 antibody [EPR4523] (ab134906) at 1/1000 dilution

Lane 1 : A673 (human muscle Ewing's Sarcoma) whole cell lysate

Lane 2 : HepG2 (human hepatocellular carcinoma epithelial cell), whole cell lysate

Lane 3 : RD (Human muscle rhabdomyosarcoma) whole cell lysate

Lysates/proteins at 20 µg per lane.

Secondary

All lanes : Goat Anti-Rabbit IgG H&L (HRP) ([ab97051](#)) at 1/20000 dilution

Predicted band size: 118 kDa

Observed band size: 150 kDa

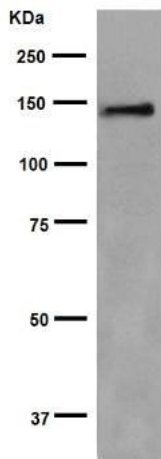
Exposure time: 180 seconds

Diluting and blocking buffer and concentration: 5% NFDM/TBST

This blot was developed using a high sensitivity ECL substrate.

The expression level of Gli1 in HepG2 and RD are consistent with describes in PMID: 19189974 and PMID: 32493277.

Negative control: HepG2 and RD (PMID: 19189974 and PMID: 32493277).



Western blot - Anti-Gli1 antibody [EPR4523]
(ab134906)

Anti-Gli1 antibody [EPR4523] (ab134906) at 1/1000 dilution
(purified) + RMS13 cell lysate at 10 µg

Secondary

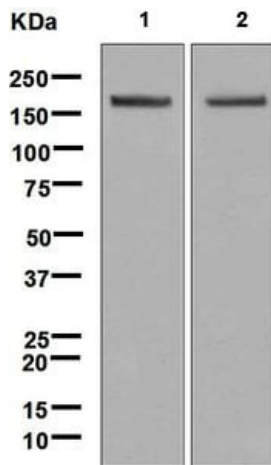
HRP goat anti-rabbit (H+L) at 1/1000 dilution

Predicted band size: 118 kDa

Observed band size: 150 kDa

Blocking buffer: 5% NFDM/TBST

Dilution buffer: 5% NFDM/TBST



Western blot - Anti-Gli1 antibody [EPR4523]
(ab134906)

All lanes : Anti-Gli1 antibody [EPR4523] (ab134906) at 1/1000 dilution (unpurified)

Lane 1 : RMS13 cell lysate

Lane 2 : A673 cell lysate

Lysates/proteins at 10 µg per lane.

Secondary

All lanes : HRP-conjugated goat anti-rabbit IgG polyclonal at 1/2000 dilution

Predicted band size: 118 kDa

Why choose a recombinant antibody?



Research with confidence
Consistent and reproducible results



Long-term and scalable supply
Recombinant technology



Success from the first experiment
Confirmed specificity



Ethical standards compliant
Animal-free production

Anti-Gli1 antibody [EPR4523] (ab134906)

Please note: All products are "FOR RESEARCH USE ONLY. NOT FOR USE IN DIAGNOSTIC PROCEDURES"

Our Abpromise to you: Quality guaranteed and expert technical support

- Replacement or refund for products not performing as stated on the datasheet
- Valid for 12 months from date of delivery
- Response to your inquiry within 24 hours
- We provide support in Chinese, English, French, German, Japanese and Spanish
- Extensive multi-media technical resources to help you
- We investigate all quality concerns to ensure our products perform to the highest standards

If the product does not perform as described on this datasheet, we will offer a refund or replacement. For full details of the Abpromise, please visit <https://www.abcam.com/abpromise> or contact our technical team.

Terms and conditions

- Guarantee only valid for products bought direct from Abcam or one of our authorized distributors