

## Product datasheet

# Anti-Gli2 antibody [OT11F9] ab187386

[6 References](#) [2 Images](#)

### Overview

---

<b>Product name</b>	Anti-Gli2 antibody [OT11F9]
<b>Description</b>	Mouse monoclonal [OT11F9] to Gli2
<b>Host species</b>	Mouse
<b>Tested applications</b>	<b>Suitable for:</b> WB, IHC-P
<b>Species reactivity</b>	<b>Reacts with:</b> Human
<b>Immunogen</b>	Recombinant fragment corresponding to Human Gli2 aa 700-1150. Produced in E.coli. (NP_005261). Database link: <a href="#">P10070-5</a> <a href="#">Run BLAST with</a> <a href="#">Run BLAST with</a>
<b>Positive control</b>	WB: HEK293T cell lysate transfected with pCMV6-ENTRY Gli2 cDNA. IHC-P: Human skin tissue.
<b>General notes</b>	<p>The Life Science industry has been in the grips of a reproducibility crisis for a number of years. Abcam is leading the way in addressing this with our range of recombinant monoclonal antibodies and knockout edited cell lines for gold-standard validation. Please check that this product meets your needs before purchasing.</p> <p>If you have any questions, special requirements or concerns, please send us an inquiry and/or contact our Support team ahead of purchase. Recommended alternatives for this product can be found below, along with publications, customer reviews and Q&amp;As</p>

### Properties

---

<b>Form</b>	Liquid
<b>Storage instructions</b>	Shipped at 4°C. Store at +4°C short term (1-2 weeks). Upon delivery aliquot. Store at -20°C long term. Avoid freeze / thaw cycle.
<b>Storage buffer</b>	pH: 7.30 Preservative: 0.02% Sodium azide Constituents: 48% PBS, 50% Glycerol, 1% BSA
<b>Purity</b>	Affinity purified
<b>Purification notes</b>	Purified from cell culture supernatant by affinity chromatography
<b>Clonality</b>	Monoclonal
<b>Clone number</b>	OT11F9

Isotype

IgG1

## Applications

---

### The Abpromise guarantee

Our **Abpromise guarantee** covers the use of ab187386 in the following tested applications.

The application notes include recommended starting dilutions; optimal dilutions/concentrations should be determined by the end user.

Application	Abreviews	Notes
WB		1/500. Predicted molecular weight: 167 kDa.
IHC-P		1/150. Perform heat mediated antigen retrieval with Tris-EDTA, pH8.0 before commencing with IHC staining protocol.

## Target

---

### Function

Acts as a transcriptional activator. May play a role during embryogenesis. Binds to the DNA sequence 5'-GAACCACCCA-3' which is part of the TRE-2S regulatory element that augments the Tax-dependent enhancer of human T-cell leukemia virus type 1. Implicated in the transduction of SHH signal.

### Involvement in disease

Defects in GLI2 are the cause of holoprosencephaly type 9 (HPE9) [MIM:610829]; also called pituitary anomalies with holoprosencephaly-like features. The primary features of this disease include defective anterior pituitary formation and pan-hypopituitarism, with or without overt forebrain cleavage abnormalities, and holoprosencephaly-like midfacial hypoplasia. Holoprosencephaly is the most common structural anomaly of the brain, in which the developing forebrain fails to correctly separate into right and left hemispheres. Holoprosencephaly is genetically heterogeneous and associated with several distinct facies and phenotypic variability.

### Sequence similarities

Belongs to the GLI C2H2-type zinc-finger protein family.  
Contains 5 C2H2-type zinc fingers.

### Post-translational modifications

Phosphorylated in vitro by ULK3.

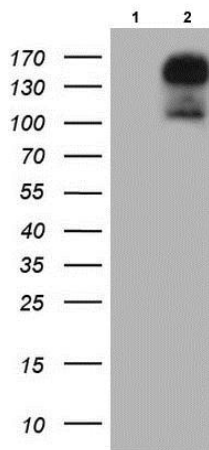
### Cellular localization

Nucleus.

---

## Images

---



Western blot - Anti-Gli2 antibody [OT11F9]  
(ab187386)

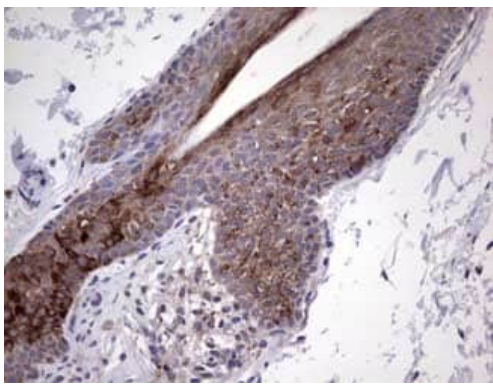
**All lanes** : Anti-Gli2 antibody [OT11F9] (ab187386) at 1/500 dilution

**Lane 1** : HEK-293T (human epithelial cell line from embryonic kidney transformed with large T antigen) cell lysate transfected with pCMV6-ENTRY control

**Lane 2** : HEK-293T cell lysate transfected with pCMV6-ENTRY Gli2 cDNA

Lysates/proteins at 5 µg per lane.

**Predicted band size:** 167 kDa



Immunohistochemistry (Formalin/PFA-fixed paraffin-embedded sections) - Anti-Gli2 antibody [OT11F9]  
(ab187386)

Paraffin-embedded Human skin tissue labeling Gli2 with ab187386 at 1/150 dilution in immunohistochemical analysis.

**Please note:** All products are "FOR RESEARCH USE ONLY. NOT FOR USE IN DIAGNOSTIC PROCEDURES"

### Our Abpromise to you: Quality guaranteed and expert technical support

- Replacement or refund for products not performing as stated on the datasheet
- Valid for 12 months from date of delivery

- Response to your inquiry within 24 hours
- We provide support in Chinese, English, French, German, Japanese and Spanish
- Extensive multi-media technical resources to help you
- We investigate all quality concerns to ensure our products perform to the highest standards

If the product does not perform as described on this datasheet, we will offer a refund or replacement. For full details of the Abpromise, please visit <https://www.abcam.com/abpromise> or contact our technical team.

### **Terms and conditions**

---

- Guarantee only valid for products bought direct from Abcam or one of our authorized distributors