



### Anti-Glucagon antibody - N-terminal ab189279

★ ★ ★ ★ ★ [1 Abreviews](#) [1 References](#) [4 Images](#)

#### Overview

<b>Product name</b>	Anti-Glucagon antibody - N-terminal
<b>Description</b>	Rabbit polyclonal to Glucagon - N-terminal
<b>Host species</b>	Rabbit
<b>Tested applications</b>	<b>Suitable for:</b> IHC-P, WB, Flow Cyt (Intra)
<b>Species reactivity</b>	<b>Reacts with:</b> Mouse, Human
<b>Immunogen</b>	Synthetic peptide within Human Glucagon aa 1-100 (N terminal) conjugated to keyhole limpet haemocyanin. The exact immunogen sequence used to generate this antibody is proprietary information. If additional detail on the immunogen is needed to determine the suitability of the antibody for your needs, please <b>contact</b> our Scientific Support team to discuss your requirements. Database link: <b>P01275</b>
	<div>  <a href="#">Run BLAST with</a> </div> <div>  <a href="#">Run BLAST with</a> </div>
<b>Positive control</b>	IHC-P: Human pancreas, islets of Langerhans; Human hepatocarcinoma tissue. Flow Cyt (Intra): HepG2 cells. WB: Mouse bladder tissue lysate.
<b>General notes</b>	<p>The Life Science industry has been in the grips of a reproducibility crisis for a number of years. Abcam is leading the way in addressing this with our range of recombinant monoclonal antibodies and knockout edited cell lines for gold-standard validation. Please check that this product meets your needs before purchasing.</p> <p>If you have any questions, special requirements or concerns, please send us an inquiry and/or contact our Support team ahead of purchase. Recommended alternatives for this product can be found below, along with publications, customer reviews and Q&amp;As</p>

#### Properties

<b>Form</b>	Liquid
<b>Storage instructions</b>	Shipped at 4°C. Store at +4°C short term (1-2 weeks). Upon delivery aliquot. Store at -20°C long term. Avoid freeze / thaw cycle.
<b>Storage buffer</b>	pH: 7.4 Preservative: 0.09% Sodium azide Constituent: 99% PBS
<b>Purity</b>	Ammonium Sulphate Precipitation

<b>Clonality</b>	Polyclonal
<b>Isotype</b>	IgG

## Applications

**The Abpromise guarantee** Our **Abpromise guarantee** covers the use of ab189279 in the following tested applications.

The application notes include recommended starting dilutions; optimal dilutions/concentrations should be determined by the end user.

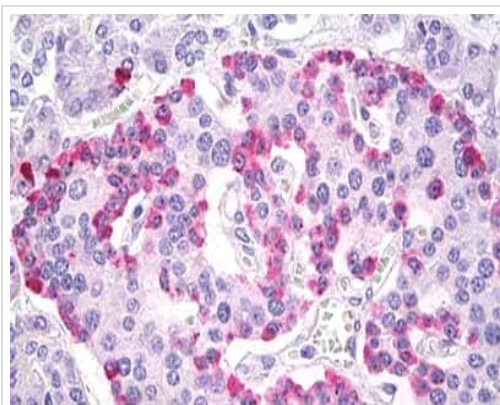
Application	Abreviews	Notes
<b>IHC-P</b>		Use a concentration of 10 µg/ml. Perform heat mediated antigen retrieval before commencing with IHC staining protocol.
<b>WB</b>		1/1000. Predicted molecular weight: 21 kDa.
<b>Flow Cyt (Intra)</b>		1/10 - 1/50. <b>ab171870</b> - Rabbit polyclonal IgG, is suitable for use as an isotype control with this antibody.

## Target

**Relevance** Glucagon is a hormone that is secreted by alpha cells in the pancreas. Glucagon antagonizes insulin by converting glycogen to glucose in the liver and increasing blood sugar levels. Glucagon-like peptide 1 (GLP1), Glucagon-like peptide 2 (GLP2), VIP (vasoactive intestinal peptide) and PACAP (pituitary adenylate cyclase activating polypeptide) are in the glucagons hormone family. GLP1 is a transmitter in the central nervous system that regulates feeding and drinking behavior. GLP2 stimulates intestinal epithelial growth.

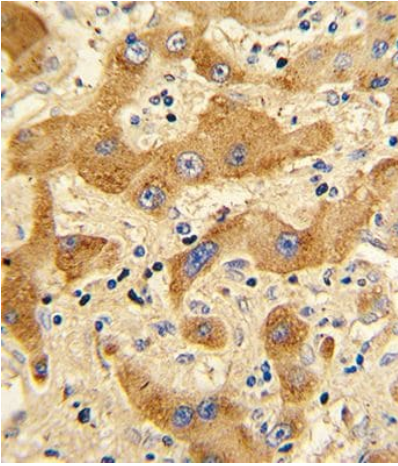
**Cellular localization** Secreted

## Images



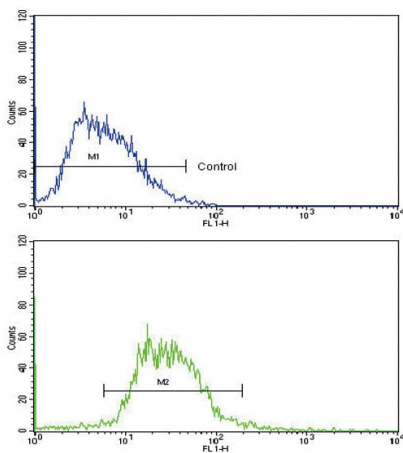
Immunohistochemical analysis of formalin-fixed, paraffin-embedded human pancreas, islets of Langerhans labeling Glucagon with ab189279 at 10 µg/ml.

Immunohistochemistry (Formalin/PFA-fixed paraffin-embedded sections) - Anti-Glucagon antibody - N-terminal (ab189279)



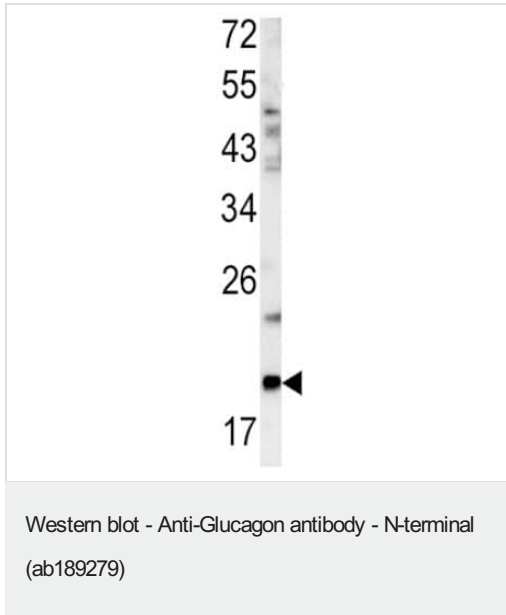
Immunohistochemical analysis of formalin-fixed, paraffin-embedded human hepatocarcinoma tissue labeling Glucagon with ab189279 at 10 µg/ml, followed by peroxidase-conjugated secondary antibody and DAB staining.

Immunohistochemistry (Formalin/PFA-fixed paraffin-embedded sections) - Anti-Glucagon antibody - N-terminal (ab189279)



Intracellular flow cytometric analysis of HepG2 cells labeling Glucagon with ab189279 at 1/10 dilution (bottom histogram) compared to negative control cells (top histogram). FITC-conjugated goat-anti-rabbit secondary antibodies were used for the analysis.

Flow Cytometry (Intracellular) - Anti-Glucagon antibody - N-terminal (ab189279)



Anti-Glucagon antibody - N-terminal (ab189279) at 1/1000 dilution  
+ Mouse bladder tissue lysate at 35 µg

**Predicted band size:** 21 kDa

**Please note:** All products are "FOR RESEARCH USE ONLY. NOT FOR USE IN DIAGNOSTIC PROCEDURES"

#### Our Abpromise to you: Quality guaranteed and expert technical support

---

- Replacement or refund for products not performing as stated on the datasheet
- Valid for 12 months from date of delivery
- Response to your inquiry within 24 hours
- We provide support in Chinese, English, French, German, Japanese and Spanish
- Extensive multi-media technical resources to help you
- We investigate all quality concerns to ensure our products perform to the highest standards

If the product does not perform as described on this datasheet, we will offer a refund or replacement. For full details of the Abpromise, please visit <https://www.abcam.com/abpromise> or contact our technical team.

#### Terms and conditions

---

- Guarantee only valid for products bought direct from Abcam or one of our authorized distributors