

## Product datasheet

### Anti-Glucose Transporter GLUT3 + GLUT14 antibody [EPR10508(N)] - N-terminal ab191071

Recombinant RabMAb

★★★★★ **6 Abreviews** **23 References** [5 Images](#)

#### Overview

<b>Product name</b>	Anti-Glucose Transporter GLUT3 + GLUT14 antibody [EPR10508(N)] - N-terminal
<b>Description</b>	Rabbit monoclonal [EPR10508(N)] to Glucose Transporter GLUT3 + GLUT14 - N-terminal
<b>Host species</b>	Rabbit
<b>Tested applications</b>	<b>Suitable for:</b> WB
<b>Species reactivity</b>	<b>Reacts with:</b> Mouse, Rat, Human
<b>Immunogen</b>	Synthetic peptide. This information is proprietary to Abcam and/or its suppliers.
<b>Positive control</b>	WB: Mouse brain and Rat brain tissue lysates; SHSY-5Y, U87-MG, NIH3T3, HepG2, C6 and RAW264.7 cell lysates, GST-tagged Recombinant Human SLC2A3(GLUT3) protein (Full length), GST tagged Recombinant Human SLC2A14(GLUT14) protein (aa51-105)
<b>General notes</b>	<p>This product is a recombinant monoclonal antibody, which offers several advantages including:</p> <ul style="list-style-type: none"> <li>- High batch-to-batch consistency and reproducibility</li> <li>- Improved sensitivity and specificity</li> <li>- Long-term security of supply</li> <li>- Animal-free production</li> </ul> <p>For more information <a href="#">see here</a>.</p> <p>Our RabMAb® technology is a patented hybridoma-based technology for making rabbit monoclonal antibodies. For details on our patents, please refer to <a href="#">RabMAb® patents</a>.</p>

#### Properties

<b>Form</b>	Liquid
<b>Storage instructions</b>	Shipped at 4°C. Store at +4°C short term (1-2 weeks). Upon delivery aliquot. Store at -20°C long term. Avoid freeze / thaw cycle.
<b>Storage buffer</b>	<p>pH: 7.2</p> <p>Preservative: 0.01% Sodium azide</p> <p>Constituents: 59% PBS, 40% Glycerol, 0.05% BSA</p>
<b>Purity</b>	Protein A purified
<b>Clonality</b>	Monoclonal

Clone number                      EPR10508(N)

Isotype                                IgG

Applications

**The Abpromise guarantee**                      Our **Abpromise guarantee** covers the use of ab191071 in the following tested applications.

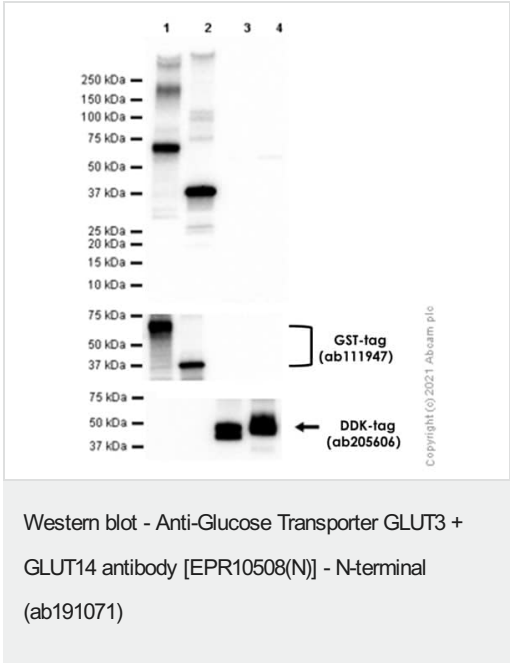
The application notes include recommended starting dilutions; optimal dilutions/concentrations should be determined by the end user.

Application	Abreviews	Notes
WB	★★★★★ (4)	1/1000 - 1/10000. Detects a band of approximately 54 kDa (predicted molecular weight: 54 kDa).

Target

**Cellular localization**                      Glucose Transporter GLUT3: Membrane. GLUT14: Membrane.

Images



**All lanes :** Anti-Glucose Transporter GLUT3 + GLUT14 antibody [EPR10508(N)] - N-terminal (ab191071) at 1/1000 dilution

- Lane 1 :** GST-tagged Recombinant Human SLC2A3(GLUT3) protein (Full length)
- Lane 2 :** GST tagged Recombinant Human SLC2A14(GLUT14) protein (aa51-105)
- Lane 3 :** MYC and DDK-tagged Recombinant Human SLC2A1(GLUT1) protein (Full length)
- Lane 4 :** MYC and DDK-tagged Recombinant Human SLC2A4(GLUT4) protein (Full length)

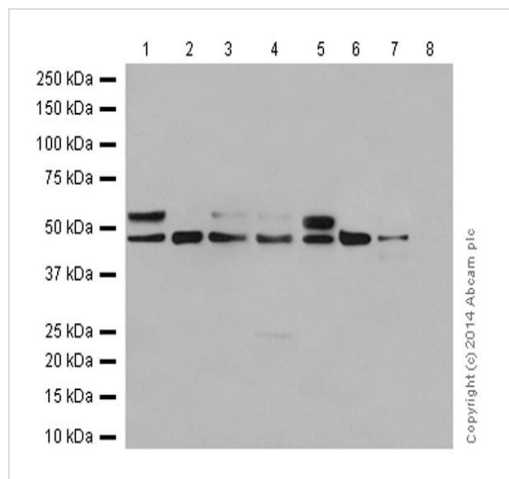
**Secondary**

**All lanes :** Goat Anti-Rabbit IgG H&L (HRP) (**ab97051**) at 1/20000 dilution (Goat Anti-Rabbit IgG, (H+L), Peroxidase conjugated)

**Predicted band size:** 54 kDa  
**Observed band size:** 38,70 kDa

**Exposure time:** 3 seconds

**Blocking and dilution buffer:** 5% NFDM/TBST.



Western blot - Anti-Glucose Transporter GLUT3 + GLUT14 antibody [EPR10508(N)] - N-terminal (ab191071)

**All lanes :** Anti-Glucose Transporter GLUT3 + GLUT14 antibody [EPR10508(N)] - N-terminal (ab191071) at 1/1000 dilution

**Lane 1 :** Mouse brain tissue lysate

**Lane 2 :** Mouse heart tissue lysate

**Lane 3 :** Mouse kidney tissue lysate

**Lane 4 :** Mouse spleen tissue lysate

**Lane 5 :** Rat brain tissue lysate

**Lane 6 :** Rat heart tissue lysate

**Lane 7 :** Rat kidney tissue lysate

**Lane 8 :** Rat spleen tissue lysate

Lysates/proteins at 20 µg per lane.

### Secondary

**All lanes :** Goat Anti-Rabbit IgG, (H+L), Peroxidase conjugated at 1/1000 dilution

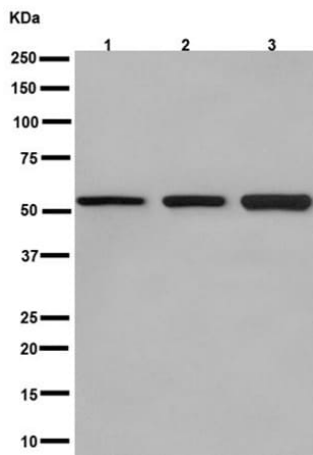
**Predicted band size:** 54 kDa

**Observed band size:** 54 kDa

**Exposure time:** 15 seconds

Blocking/Diluting buffer and concentration: 5% NFDM/TBST

We are unsure as to the identity of the band below 54kDa. This is not the target band.



Western blot - Anti-Glucose Transporter GLUT3 + GLUT14 antibody [EPR10508(N)] - N-terminal (ab191071)

**All lanes :** Anti-Glucose Transporter GLUT3 + GLUT14 antibody [EPR10508(N)] - N-terminal (ab191071) at 1/10000 dilution

**Lane 1 :** SH-SH5Y cell lysate

**Lane 2 :** U87-MG cell lysate

**Lane 3 :** HepG2 cell lysate

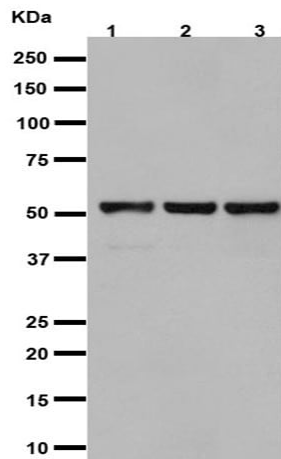
Lysates/proteins at 20 µg per lane.

#### Secondary

**All lanes :** Goat Anti-Rabbit IgG, (H+L), Peroxidase conjugated at 1/1000 dilution

**Predicted band size:** 54 kDa

**Observed band size:** 54 kDa



Western blot - Anti-Glucose Transporter GLUT3 + GLUT14 antibody [EPR10508(N)] - N-terminal (ab191071)

**All lanes :** Anti-Glucose Transporter GLUT3 + GLUT14 antibody [EPR10508(N)] - N-terminal (ab191071) at 1/1000 dilution

**Lane 1 :** C6 cell lysate

**Lane 2 :** RAW264.7 cell lysate

**Lane 3 :** NIH 3T3 cell lysate

Lysates/proteins at 10 µg per lane.

#### Secondary

**All lanes :** Goat Anti-Rabbit IgG, (H+L), Peroxidase conjugated at 1/1000 dilution

**Predicted band size:** 54 kDa

**Observed band size:** 54 kDa

### Why choose a recombinant antibody?



**Research with confidence**  
Consistent and reproducible results



**Long-term and scalable supply**  
Recombinant technology



**Success from the first experiment**  
Confirmed specificity



**Ethical standards compliant**  
Animal-free production

Anti-Glucose Transporter GLUT3 + GLUT14 antibody  
[EPR10508(N)] - N-terminal (ab191071)

**Please note:** All products are "FOR RESEARCH USE ONLY. NOT FOR USE IN DIAGNOSTIC PROCEDURES"

### Our Abpromise to you: Quality guaranteed and expert technical support

- Replacement or refund for products not performing as stated on the datasheet
- Valid for 12 months from date of delivery
- Response to your inquiry within 24 hours
- We provide support in Chinese, English, French, German, Japanese and Spanish
- Extensive multi-media technical resources to help you
- We investigate all quality concerns to ensure our products perform to the highest standards

If the product does not perform as described on this datasheet, we will offer a refund or replacement. For full details of the Abpromise, please visit <https://www.abcam.com/abpromise> or contact our technical team.

### Terms and conditions

- Guarantee only valid for products bought direct from Abcam or one of our authorized distributors