

## Product datasheet

# Anti-Glucuronic Acid Epimerase/GLCE antibody ab68714

[1 References](#) [1 Image](#)

### Overview

<b>Product name</b>	Anti-Glucuronic Acid Epimerase/GLCE antibody
<b>Description</b>	Mouse polyclonal to Glucuronic Acid Epimerase/GLCE
<b>Host species</b>	Mouse
<b>Tested applications</b>	<b>Suitable for:</b> WB
<b>Species reactivity</b>	<b>Reacts with:</b> Human
<b>Immunogen</b>	Recombinant full length protein within Human Glucuronic Acid Epimerase/GLCE. The exact immunogen sequence used to generate this antibody is proprietary information. If additional detail on the immunogen is needed to determine the suitability of the antibody for your needs, please <b><a href="#">contact</a></b> our Scientific Support team to discuss your requirements. Database link: <b><a href="#">NP_056369.1</a></b>
<b>Positive control</b>	Glucuronic Acid Epimerase/GLCE transfected 293T lysate.
<b>General notes</b>	<p>The Life Science industry has been in the grips of a reproducibility crisis for a number of years. Abcam is leading the way in addressing this with our range of recombinant monoclonal antibodies and knockout edited cell lines for gold-standard validation. Please check that this product meets your needs before purchasing.</p> <p>If you have any questions, special requirements or concerns, please send us an inquiry and/or contact our Support team ahead of purchase. Recommended alternatives for this product can be found below, along with publications, customer reviews and Q&amp;As</p>

### Properties

<b>Form</b>	Liquid
<b>Storage instructions</b>	Shipped at 4°C. Upon delivery aliquot. Store at -20°C or -80°C. Avoid freeze / thaw cycle.
<b>Storage buffer</b>	pH: 7.40 Constituent: 100% PBS
<b>Purity</b>	Protein A purified
<b>Clonality</b>	Polyclonal
<b>Isotype</b>	IgG

## Applications

### The Abpromise guarantee

Our **Abpromise guarantee** covers the use of ab68714 in the following tested applications.

The application notes include recommended starting dilutions; optimal dilutions/concentrations should be determined by the end user.

Application	Abreviews	Notes
WB		1/500 - 1/1000. Detects a band of approximately 71 kDa (predicted molecular weight: 71 kDa).

## Target

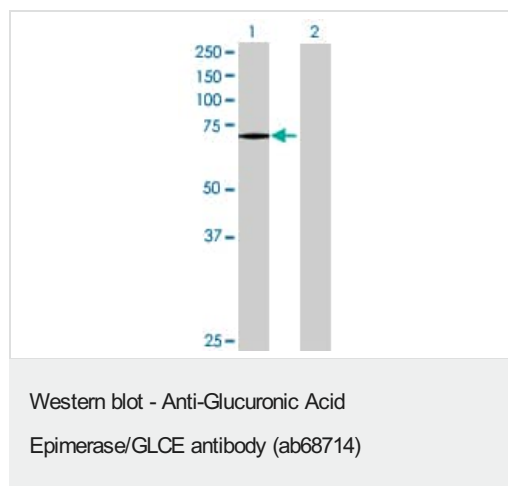
### Relevance

Glucuronic Acid Epimerase (GLCE) is responsible for epimerization of D-glucuronic acid (GlcA) to L-iduronic acid (IdoA) of Heparan sulfate (HS), which endows the nascent polysaccharide chain with the ability to bind growth factors and cytokines (Ghiselli and Agrawal, 2005 [PubMed 15853773]).

### Cellular localization

Golgi apparatus membrane; Single-pass type II membrane protein

## Images



**All lanes :** Anti-Glucuronic Acid Epimerase/GLCE antibody (ab68714) at 1/500 dilution

**Lane 1 :** Glucuronic Acid Epimerase/GLCE transfected 293T lysate

**Lane 2 :** Non-transfected 293T lysate

Lysates/proteins at 25 µg per lane.

### Secondary

**Lane 1 :** Goat Anti-Mouse IgG (H&L)-HRP at 1/2500 dilution

**Lane 2 :** Goat Anti-Mouse IgG (H&L)-HRP at 1/2500 dilution

**Predicted band size:** 71 kDa

**Observed band size:** 71 kDa

**Please note:** All products are "FOR RESEARCH USE ONLY. NOT FOR USE IN DIAGNOSTIC PROCEDURES"

## Our Abpromise to you: Quality guaranteed and expert technical support

- Replacement or refund for products not performing as stated on the datasheet
- Valid for 12 months from date of delivery
- Response to your inquiry within 24 hours

- We provide support in Chinese, English, French, German, Japanese and Spanish
- Extensive multi-media technical resources to help you
- We investigate all quality concerns to ensure our products perform to the highest standards

If the product does not perform as described on this datasheet, we will offer a refund or replacement. For full details of the Abpromise, please visit <https://www.abcam.com/abpromise> or contact our technical team.

#### **Terms and conditions**

---

- Guarantee only valid for products bought direct from Abcam or one of our authorized distributors