

Product datasheet

Anti-GLUD1 + GLUD2 antibody [EPR11369(B)] ab166618

Recombinant RabMAb

★★★★☆ [2 Abreviews](#) [16 References](#) [8 Images](#)

Overview

Product name	Anti-GLUD1 + GLUD2 antibody [EPR11369(B)]
Description	Rabbit monoclonal [EPR11369(B)] to GLUD1 + GLUD2
Host species	Rabbit
Specificity	Ab166618 immunogen shows 100% identity to human GLUD2.
Tested applications	Suitable for: IP, WB, IHC-P Unsuitable for: Flow Cyt or ICC/IF
Species reactivity	Reacts with: Mouse, Rat, Human
Immunogen	Synthetic peptide within Human GLUD1 aa 50-150. The exact sequence is proprietary. Database link: P00367
Positive control	IHC-P: Human tonsil tissue; Human colon tissue; Human kidney tissue; Human brain tissue; Human liver tissue; Human skeletal muscle tissue. WB: Human fetal liver lysates, HeLa cell lysates, HepG2 lysates, 293T lysates.
General notes	This product is a recombinant monoclonal antibody, which offers several advantages including: <ul style="list-style-type: none"> - High batch-to-batch consistency and reproducibility - Improved sensitivity and specificity - Long-term security of supply - Animal-free production For more information see here . Our RabMAb [®] technology is a patented hybridoma-based technology for making rabbit monoclonal antibodies. For details on our patents, please refer to RabMAb[®] patents .

Properties

Form	Liquid
Storage instructions	Shipped at 4°C. Upon delivery aliquot and store at -20°C. Avoid repeated freeze / thaw cycles.
Storage buffer	pH: 7.2 Preservative: 0.01% Sodium azide Constituents: 9% PBS, 40% Glycerol (glycerin, glycerine), 0.05% BSA, 50% Tissue culture supernatant
Purity	Protein A purified

Clonality	Monoclonal
Clone number	EPR11369(B)
Isotype	IgG

Applications

The Abpromise guarantee Our **Abpromise guarantee** covers the use of ab166618 in the following tested applications. The application notes include recommended starting dilutions; optimal dilutions/concentrations should be determined by the end user.

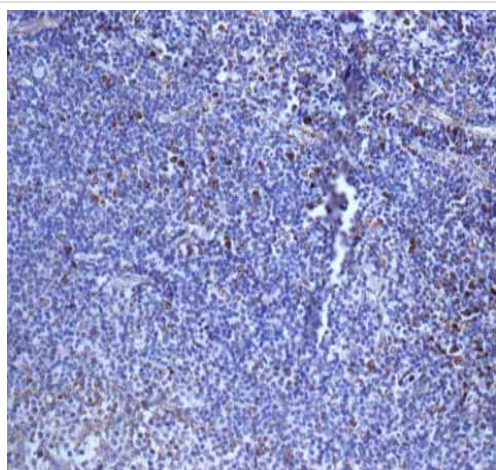
Application	Abreviews	Notes
IP		Use at an assay dependent concentration.
WB	★★★★★ (1)	1/1000 - 1/10000. Predicted molecular weight: 52 kDa.
IHC-P		1/250 - 1/500. Perform heat mediated antigen retrieval with citrate buffer pH 6 before commencing with IHC staining protocol.

Application notes Is unsuitable for Flow Cyt or ICC/IF.

Target

Cellular localization GLUD1: Mitochondrion matrix. GLUD2: Mitochondrion matrix.

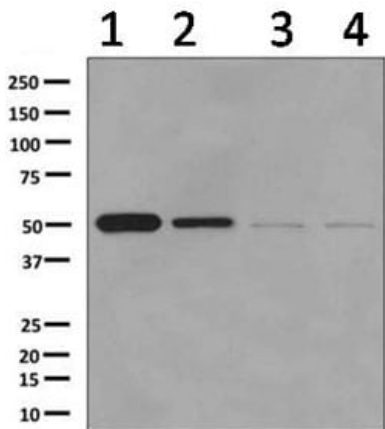
Images



ab166618 showing +ve staining in Human normal tonsil.

Perform heat mediated antigen retrieval with citrate buffer pH 6 before commencing with IHC staining protocol.

Immunohistochemistry (Formalin/PFA-fixed paraffin-embedded sections) - Anti-GLUD1 + GLUD2 antibody [EPR11369(B)] (ab166618)



Western blot - Anti-GLUD1 + GLUD2 antibody [EPR11369(B)] (ab166618)

All lanes : Anti-GLUD1 + GLUD2 antibody [EPR11369(B)] (ab166618) at 1/10000 dilution

Lane 1 : Human fetal liver lysates

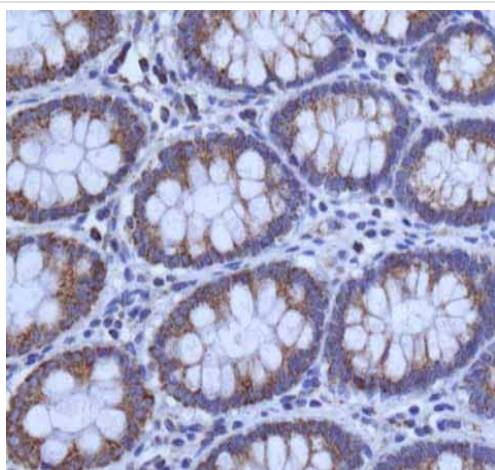
Lane 2 : HepG2 lysates

Lane 3 : HeLa lysates

Lane 4 : 293T lysates

Lysates/proteins at 10 µg per lane.

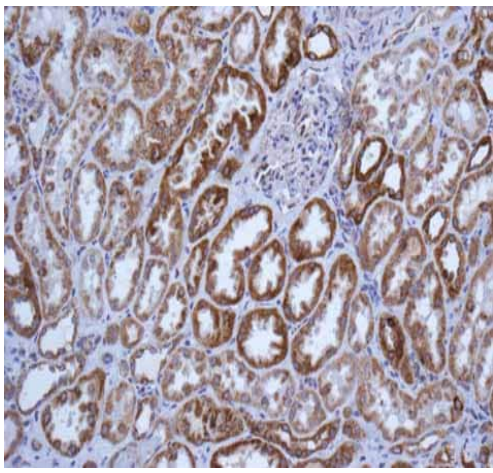
Predicted band size: 52 kDa



Immunohistochemistry (Formalin/PFA-fixed paraffin-embedded sections) - Anti-GLUD1 + GLUD2 antibody [EPR11369(B)] (ab166618)

ab166618 showing +ve staining in Human normal colon.

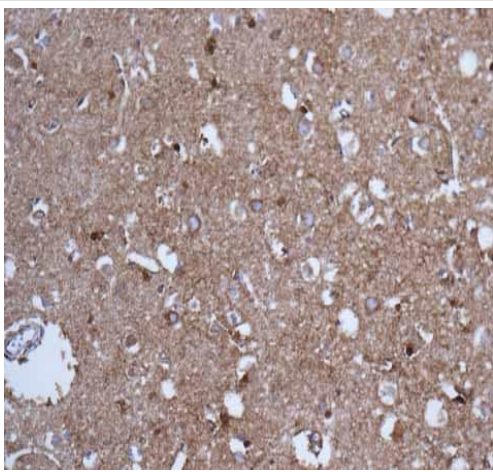
Perform heat mediated antigen retrieval with citrate buffer pH 6 before commencing with IHC staining protocol.



Immunohistochemistry (Formalin/PFA-fixed paraffin-embedded sections) - Anti-GLUD1 + GLUD2 antibody [EPR11369(B)] (ab166618)

ab166618 showing +ve staining in Human normal kidney.

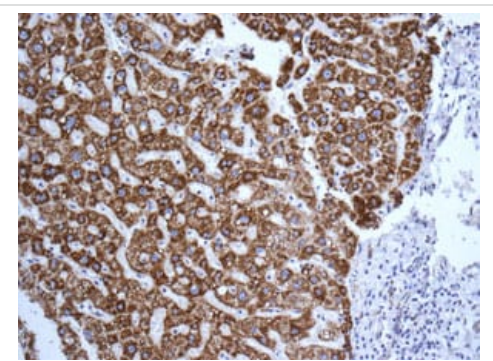
Perform heat mediated antigen retrieval with citrate buffer pH 6 before commencing with IHC staining protocol.



Immunohistochemistry (Formalin/PFA-fixed paraffin-embedded sections) - Anti-GLUD1 + GLUD2 antibody [EPR11369(B)] (ab166618)

ab166618 showing +ve staining in Human normal brain.

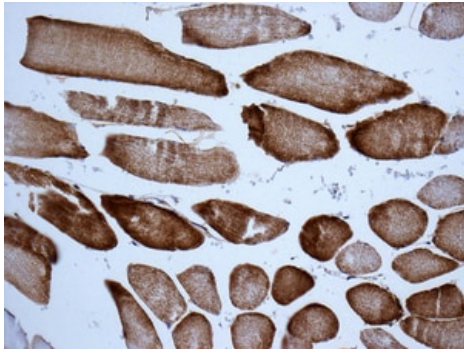
Perform heat mediated antigen retrieval with citrate buffer pH 6 before commencing with IHC staining protocol.



Immunohistochemistry (Formalin/PFA-fixed paraffin-embedded sections) - Anti-GLUD1 + GLUD2 antibody [EPR11369(B)] (ab166618)

Immunohistochemical analysis of paraffin-embedded Human liver tissue labeling GLUD1 with ab166618 at 1/250 dilution.

Perform heat mediated antigen retrieval with citrate buffer pH 6 before commencing with IHC staining protocol.



Immunohistochemistry (Formalin/PFA-fixed paraffin-embedded sections) - Anti-GLUD1 + GLUD2 antibody [EPR11369(B)] (ab166618)

Immunohistochemical analysis of paraffin-embedded Human skeletal muscle tissue labeling GLUD1 with ab166618 at 1/250 dilution.

Perform heat mediated antigen retrieval with citrate buffer pH 6 before commencing with IHC staining protocol.

Why choose a recombinant antibody?



Research with confidence
Consistent and reproducible results



Long-term and scalable supply
Recombinant technology



Success from the first experiment
Confirmed specificity



Ethical standards compliant
Animal-free production

Anti-GLUD1 + GLUD2 antibody [EPR11369(B)] (ab166618)

Please note: All products are "FOR RESEARCH USE ONLY. NOT FOR USE IN DIAGNOSTIC PROCEDURES"

Our Abpromise to you: Quality guaranteed and expert technical support

- Replacement or refund for products not performing as stated on the datasheet
- Valid for 12 months from date of delivery
- Response to your inquiry within 24 hours
- We provide support in Chinese, English, French, German, Japanese and Spanish
- Extensive multi-media technical resources to help you
- We investigate all quality concerns to ensure our products perform to the highest standards

If the product does not perform as described on this datasheet, we will offer a refund or replacement. For full details of the Abpromise, please visit <https://www.abcam.com/abpromise> or contact our technical team.

Terms and conditions

-
- Guarantee only valid for products bought direct from Abcam or one of our authorized distributors