


Product datasheet

Anti-GLUD1 + GLUD2 antibody [EPR11370] ab168352

Recombinant RabMAb

★★★★★ 1 Abreviews 9 References 9 Images

Overview

Product name	Anti-GLUD1 + GLUD2 antibody [EPR11370]
Description	Rabbit monoclonal [EPR11370] to GLUD1 + GLUD2
Host species	Rabbit
Tested applications	Suitable for: Flow Cyt (Intra), WB, IHC-P, ICC/IF Unsuitable for: IP
Species reactivity	Reacts with: Human Predicted to work with: Mouse, Rat 
Immunogen	Synthetic peptide. This information is proprietary to Abcam and/or its suppliers.
Positive control	WB: Human fetal liver tissue lysate and HepG2 whole cell lysate (ab7900). IHC-P: Human heart and liver tissues. ICC/IF: HepG2 cells. Flow Cyt (intra): HeLa cells.
General notes	<p>This product is a recombinant monoclonal antibody, which offers several advantages including:</p> <ul style="list-style-type: none"> - High batch-to-batch consistency and reproducibility - Improved sensitivity and specificity - Long-term security of supply - Animal-free production <p>For more information see here.</p> <p>Our RabMAb[®] technology is a patented hybridoma-based technology for making rabbit monoclonal antibodies. For details on our patents, please refer to RabMAb[®] patents.</p>

Properties

Form	Liquid
Storage instructions	Shipped at 4°C. Store at +4°C short term (1-2 weeks). Upon delivery aliquot. Store at -20°C long term. Avoid freeze / thaw cycle.
Storage buffer	pH: 7.2 Preservative: 0.01% Sodium azide Constituents: 9% PBS, 40% Glycerol (glycerin, glycerine), 0.05% BSA, 50% Tissue culture supernatant
Purity	Tissue culture supernatant
Clonality	Monoclonal

Clone number EPR11370

Isotype IgG

Applications

The Abpromise guarantee Our **Abpromise guarantee** covers the use of ab168352 in the following tested applications. The application notes include recommended starting dilutions; optimal dilutions/concentrations should be determined by the end user.

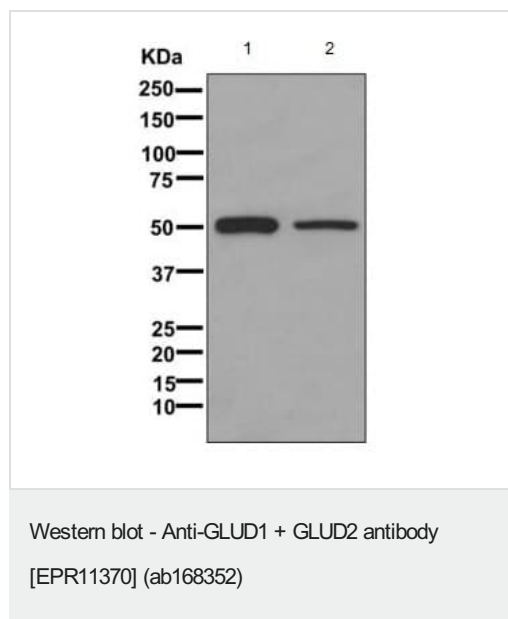
Application	Abreviews	Notes
Flow Cyt (Intra)		1/2000. ab172730 - Rabbit monoclonal IgG, is suitable for use as an isotype control with this antibody.
WB		1/1000 - 1/10000. Predicted molecular weight: 61 kDa.
IHC-P		1/100 - 1/250. Perform heat mediated antigen retrieval with citrate buffer pH 6 before commencing with IHC staining protocol.
ICC/IF		1/50 - 1/100.

Application notes Is unsuitable for IP.

Target

Cellular localization GLUD1: Mitochondrion matrix. GLUD2: Mitochondrion matrix.

Images



All lanes : Anti-GLUD1 + GLUD2 antibody [EPR11370]
(ab168352) at 1/1000 dilution

Lane 1 : Human fetal liver lysate

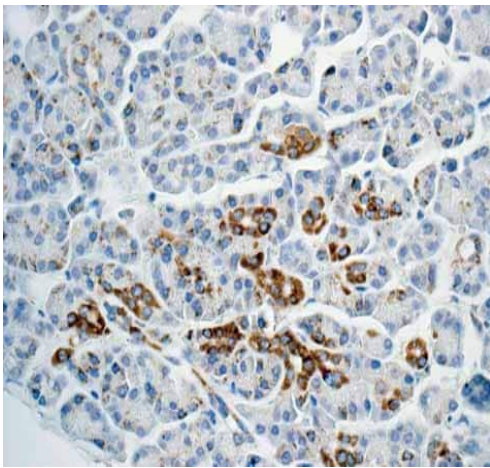
Lane 2 : HepG2 cell lysate

Lysates/proteins at 10 µg per lane.

Secondary

All lanes : HRP labeled goat anti-rabbit at 1/2000 dilution

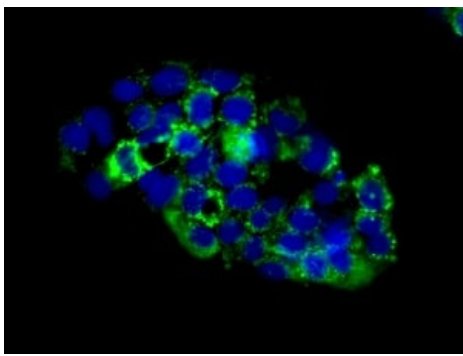
Predicted band size: 61 kDa



Immunohistochemistry (Formalin/PFA-fixed paraffin-embedded sections) - Anti-GLUD1 + GLUD2 antibody [EPR11370] (ab168352)

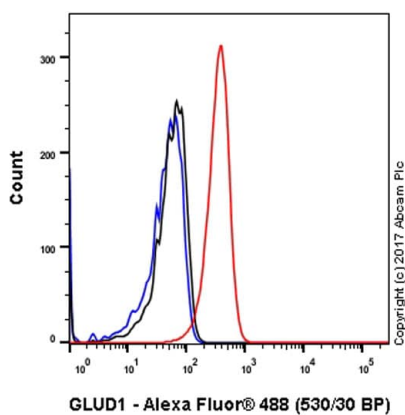
ab168352 showing +ve staining in Human normal pancreas.

Perform heat mediated antigen retrieval with citrate buffer pH 6 before commencing with IHC staining protocol.



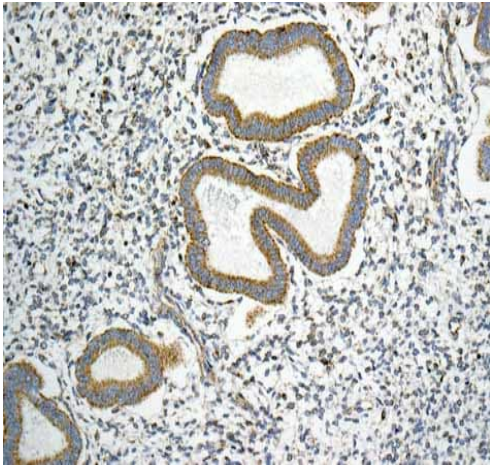
Immunocytochemistry/ Immunofluorescence - Anti-GLUD1 + GLUD2 antibody [EPR11370] (ab168352)

Immunofluorescent analysis of HepG2 cells labeling Glutamate Dehydrogenase with ab168352 at 1/50 dilution.



Flow Cytometry (Intracellular) - Anti-GLUD1 + GLUD2 antibody [EPR11370] (ab168352)

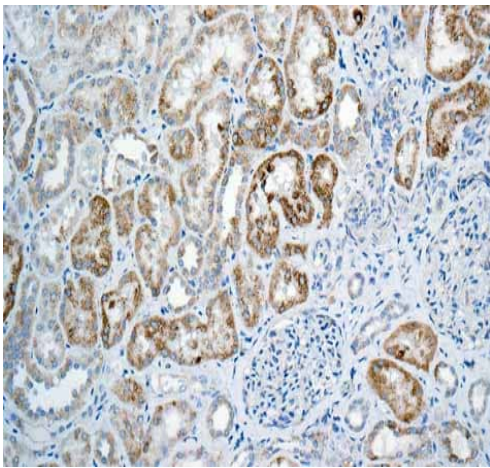
Intracellular Flow Cytometry analysis of HeLa (human cervix adenocarcinoma) cells labeling GLUD1 (red) with ab168352 at a 1/2000 dilution. Cells were fixed with 4% paraformaldehyde and permeabilized with 90% methanol. A goat anti-rabbit IgG (Alexa Fluor® 488) ([ab150077](#)) was used as the secondary antibody at a 1/2000 dilution. Black - Rabbit monoclonal IgG ([ab172730](#)). Blue (unlabeled control) - Cells without incubation with the primary and secondary antibodies.



Immunohistochemistry (Formalin/PFA-fixed paraffin-embedded sections) - Anti-GLUD1 + GLUD2 antibody [EPR11370] (ab168352)

ab168352 showing +ve staining in Human normal uterus.

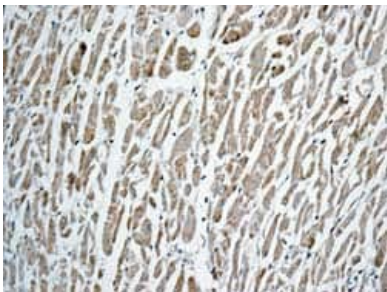
Perform heat mediated antigen retrieval with citrate buffer pH 6 before commencing with IHC staining protocol.



Immunohistochemistry (Formalin/PFA-fixed paraffin-embedded sections) - Anti-GLUD1 + GLUD2 antibody [EPR11370] (ab168352)

ab168352 showing +ve staining in Human normal kidney.

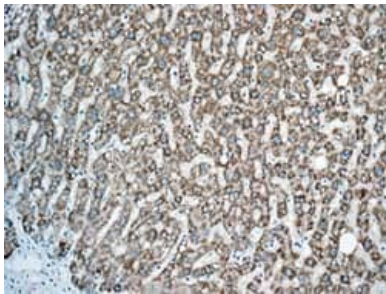
Perform heat mediated antigen retrieval with citrate buffer pH 6 before commencing with IHC staining protocol.



Immunohistochemistry (Formalin/PFA-fixed paraffin-embedded sections) - Anti-GLUD1 + GLUD2 antibody [EPR11370] (ab168352)

Immunohistochemical analysis of paraffin-embedded Human heart tissue labeling Glutamate Dehydrogenase with ab168352 at 1/100 dilution.

Perform heat mediated antigen retrieval with citrate buffer pH 6 before commencing with IHC staining protocol.



Immunohistochemical analysis of paraffin-embedded Human liver tissue labeling Glutamate Dehydrogenase with ab168352 at 1/100 dilution.

Perform heat mediated antigen retrieval with citrate buffer pH 6 before commencing with IHC staining protocol.

Immunohistochemistry (Formalin/PFA-fixed paraffin-embedded sections) - Anti-GLUD1 + GLUD2 antibody [EPR11370] (ab168352)

Why choose a recombinant antibody?



Research with confidence
Consistent and reproducible results



Long-term and scalable supply
Recombinant technology



Success from the first experiment
Confirmed specificity



Ethical standards compliant
Animal-free production

Anti-GLUD1 + GLUD2 antibody [EPR11370] (ab168352)

Please note: All products are "FOR RESEARCH USE ONLY. NOT FOR USE IN DIAGNOSTIC PROCEDURES"

Our Abpromise to you: Quality guaranteed and expert technical support

- Replacement or refund for products not performing as stated on the datasheet
- Valid for 12 months from date of delivery
- Response to your inquiry within 24 hours
- We provide support in Chinese, English, French, German, Japanese and Spanish
- Extensive multi-media technical resources to help you
- We investigate all quality concerns to ensure our products perform to the highest standards

If the product does not perform as described on this datasheet, we will offer a refund or replacement. For full details of the Abpromise, please visit <https://www.abcam.com/abpromise> or contact our technical team.

Terms and conditions

- Guarantee only valid for products bought direct from Abcam or one of our authorized distributors