

## Product datasheet

### Anti-Glutaminase antibody [EP7212] ab156876

KO **VALIDATED** Recombinant RabMAb<sup>®</sup>

★★★★☆ [4 Abreviews](#) [77 References](#) [4 Images](#)

#### Overview

<b>Product name</b>	Anti-Glutaminase antibody [EP7212]
<b>Description</b>	Rabbit monoclonal [EP7212] to Glutaminase
<b>Host species</b>	Rabbit
<b>Tested applications</b>	<b>Suitable for:</b> WB <b>Unsuitable for:</b> Flow Cyt (Intra), ICC/IF or IHC-P
<b>Species reactivity</b>	<b>Reacts with:</b> Human
<b>Immunogen</b>	Synthetic peptide. This information is proprietary to Abcam and/or its suppliers.
<b>Positive control</b>	WB: Human kidney tissue lysates, HeLa and 293T cell lysates, wild type HAP1 cells.
<b>General notes</b>	Our RabMAb <sup>®</sup> technology is a patented hybridoma-based technology for making rabbit monoclonal antibodies. For details on our patents, please refer to <a href="#">RabMAb<sup>®</sup> patents</a> .

#### Properties

<b>Form</b>	Liquid
<b>Storage instructions</b>	Shipped at 4°C. Store at +4°C short term (1-2 weeks). Upon delivery aliquot. Store at -20°C. Avoid freeze / thaw cycle.
<b>Storage buffer</b>	Preservative: 0.01% Sodium azide Constituents: 40% Glycerol, 0.05% BSA, 59% PBS
<b>Purity</b>	Protein A purified
<b>Clonality</b>	Monoclonal
<b>Clone number</b>	EP7212
<b>Isotype</b>	IgG

#### Applications

**The Abpromise guarantee** Our **Abpromise guarantee** covers the use of ab156876 in the following tested applications.  
The application notes include recommended starting dilutions; optimal dilutions/concentrations should be determined by the end user.

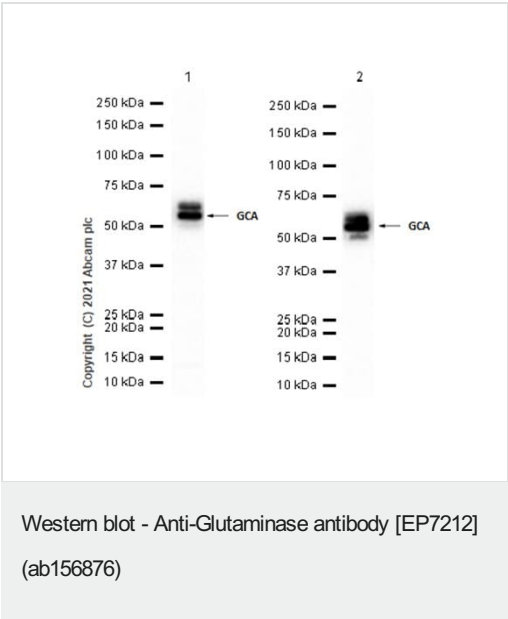
Application	Abreviews	Notes
WB	★★★★★ (2)	1/1000 - 1/10000. Predicted molecular weight: 73 kDa.

**Application notes** Is unsuitable for Flow Cyt (Intra),ICC/IF or IHC-P.

Target

Function	Catalyzes the first reaction in the primary pathway for the renal catabolism of glutamine.
Tissue specificity	KGA is expressed predominantly in brain and kidney but not in liver, isoform 3 is expressed principally in cardiac muscle and pancreas but not in liver or brain, and isoform 2 is expressed solely in cardiac and skeletal muscle.
Sequence similarities	Belongs to the glutaminase family. Contains 1 ANK repeat.
Cellular localization	Mitochondrion.

Images



**All lanes :** Anti-Glutaminase antibody [EP7212] (ab156876) at 1/1000 dilution

**Lane 1 :** HEK-293 (Human embryonic kidney epithelial cell) whole cell lysate

**Lane 2 :** HeLa (Human cervix adenocarcinoma epithelial cell) whole cell lysate

Lysates/proteins at 20 µg per lane.

Secondary

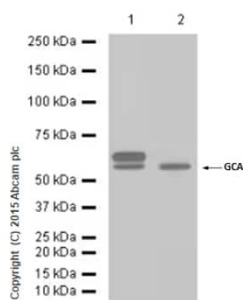
**All lanes :** Goat Anti-Rabbit IgG H&L (HRP) ([ab97051](#)) at 1/20000 dilution

Developed using the ECL technique.

**Predicted band size:** 73 kDa  
**Observed band size:** 65 kDa

**Exposure time:** 1 second

Blocking and diluting buffer and concentration: 5% NFDM/TBST.



Western blot - Anti-Glutaminase antibody [EP7212]  
(ab156876)

**All lanes :** Anti-Glutaminase antibody [EP7212] (ab156876) at 1/1000 dilution

**Lane 1 :** Human kidney tissue lysate

**Lane 2 :** HeLa (Human cervix adenocarcinoma epithelial cell) whole cell lysate

Lysates/proteins at 20 µg per lane.

### Secondary

**All lanes :** Goat Anti-Rabbit IgG H&L (HRP) ([ab97051](#)) at 1/20000 dilution

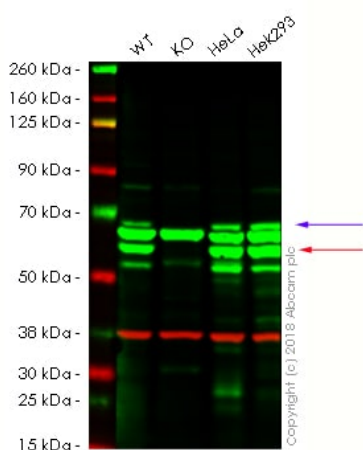
Developed using the ECL technique.

**Predicted band size:** 73 kDa

**Observed band size:** 65 kDa

**Exposure time:** 1 second

Blocking and diluting buffer and concentration: 5% NFDM/TBST.



Western blot - Anti-Glutaminase antibody [EP7212]  
(ab156876)

**Lane 1:** Wild type HAP1 whole cell lysate (20 µg) **Lane 2:** GLS knockout HAP1 whole cell lysate (20 µg) **Lane 3:** HeLa whole cell lysate (20 µg) **Lane 4:** HEK293 whole cell lysate (20 µg) **Lanes 1 - 4:** Merged signal (red and green). Green - ab156876 observed at 62 kDa. Red - loading control, [ab8245](#), observed at 37 kDa.

ab156876 was shown to recognize GLS in wild-type HAP1 cells as signal was lost at the expected MW in HAP1 knockout cells. Additional cross-reactive bands were observed in the wild-type and knockout cells. Wild-type and GLS knockout samples were subjected to SDS-PAGE. Ab156876 and [ab8245](#) (Mouse anti GAPDH loading control) were incubated overnight at 4°C at 1/1000 dilution and 1/10,000 dilution respectively. Blots were developed with Goat anti-Rabbit IgG H&L (IRDye® 800CW) preabsorbed ([ab216773](#)) and Goat anti-Mouse IgG H&L (IRDye® 680RD) preabsorbed ([ab216776](#)) secondary antibodies at 1/10,000 dilution for 1hr at room temperature before imaging.

Blue arrow corresponds to isoform 1 KGA.

Red arrow corresponds to isoform 3 GAC.

### Why choose a recombinant antibody?



**Research with confidence**  
Consistent and reproducible results



**Long-term and scalable supply**  
Recombinant technology



**Success from the first experiment**  
Confirmed specificity



**Ethical standards compliant**  
Animal-free production

Anti-Glutaminase antibody [EP7212] (ab156876)

**Please note:** All products are "FOR RESEARCH USE ONLY. NOT FOR USE IN DIAGNOSTIC PROCEDURES"

### Our Abpromise to you: Quality guaranteed and expert technical support

---

- Replacement or refund for products not performing as stated on the datasheet
- Valid for 12 months from date of delivery
- Response to your inquiry within 24 hours
- We provide support in Chinese, English, French, German, Japanese and Spanish
- Extensive multi-media technical resources to help you
- We investigate all quality concerns to ensure our products perform to the highest standards

If the product does not perform as described on this datasheet, we will offer a refund or replacement. For full details of the Abpromise, please visit <https://www.abcam.com/abpromise> or contact our technical team.

### Terms and conditions

---

- Guarantee only valid for products bought direct from Abcam or one of our authorized distributors