

Product datasheet

Anti-Glutaminase antibody [EP7212] - BSA and Azide free ab214802

KO VALIDATED Recombinant RabMAb

[2 References](#) [3 Images](#)

Overview

Product name	Anti-Glutaminase antibody [EP7212] - BSA and Azide free
Description	Rabbit monoclonal [EP7212] to Glutaminase - BSA and Azide free
Host species	Rabbit
Tested applications	Suitable for: WB Unsuitable for: Flow Cyt (Intra), ICC/IF or IHC-P
Species reactivity	Reacts with: Human
Immunogen	Synthetic peptide. This information is proprietary to Abcam and/or its suppliers.
Positive control	WB: Human kidney tissue lysates, HeLa and 293T cell lysates, wild type HAP1 cells.
General notes	<p>ab214802 is the carrier-free version of ab156876.</p> <p>Our carrier-free antibodies are typically supplied in a PBS-only formulation, purified and free of BSA, sodium azide and glycerol. The carrier-free buffer and high concentration allow for increased conjugation efficiency.</p> <p>This conjugation-ready format is designed for use with fluorochromes, metal isotopes, oligonucleotides, and enzymes, which makes them ideal for antibody labelling, functional and cell-based assays, flow-based assays (e.g. mass cytometry) and Multiplex Imaging applications.</p> <p>Use our conjugation kits for antibody conjugates that are ready-to-use in as little as 20 minutes with <1 minute hands-on-time and 100% antibody recovery: available for fluorescent dyes, HRP, biotin and gold.</p> <p>This product is compatible with the Maxpar[®] Antibody Labeling Kit from Fluidigm, without the need for antibody preparation. Maxpar[®] is a trademark of Fluidigm Canada Inc.</p> <p>This product is a recombinant monoclonal antibody, which offers several advantages including:</p> <ul style="list-style-type: none">- High batch-to-batch consistency and reproducibility- Improved sensitivity and specificity- Long-term security of supply- Animal-free production <p>For more information see here.</p> <p>Our RabMAb[®] technology is a patented hybridoma-based technology for making rabbit monoclonal antibodies. For details on our patents, please refer to RabMAb[®] patents.</p>

Properties

Form	Liquid
Storage instructions	Shipped at 4°C. Store at +4°C. Do Not Freeze.
Storage buffer	pH: 7.2 Constituent: PBS
Carrier free	Yes
Purity	Protein A purified
Clonality	Monoclonal
Clone number	EP7212
Isotype	IgG

Applications

The Abpromise guarantee Our **Abpromise guarantee** covers the use of ab214802 in the following tested applications. The application notes include recommended starting dilutions; optimal dilutions/concentrations should be determined by the end user.

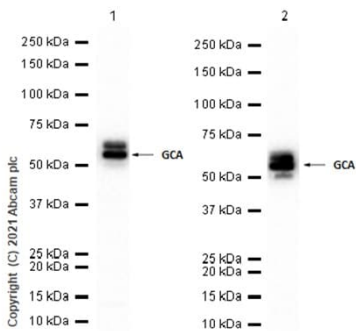
Application	Abreviews	Notes
WB		Use at an assay dependent concentration. Predicted molecular weight: 73 kDa.

Application notes Is unsuitable for Flow Cyt (Intra), ICC/IF or IHC-P.

Target

Function	Catalyzes the first reaction in the primary pathway for the renal catabolism of glutamine.
Tissue specificity	KGA is expressed predominantly in brain and kidney but not in liver, isoform 3 is expressed principally in cardiac muscle and pancreas but not in liver or brain, and isoform 2 is expressed solely in cardiac and skeletal muscle.
Sequence similarities	Belongs to the glutaminase family. Contains 1 ANK repeat.
Cellular localization	Mitochondrion.

Images



Western blot - Anti-Glutaminase antibody [EP7212]
- BSA and Azide free (ab214802)

All lanes : Anti-Glutaminase antibody [EP7212] ([ab156876](#)) at 1/1000 dilution

Lane 1 : HEK-293 (Human embryonic kidney epithelial cell) whole cell lysate

Lane 2 : HeLa (Human cervix adenocarcinoma epithelial cell) whole cell lysate

Lysates/proteins at 20 µg per lane.

Secondary

All lanes : Goat Anti-Rabbit IgG H&L (HRP) ([ab97051](#)) at 1/20000 dilution

Developed using the ECL technique.

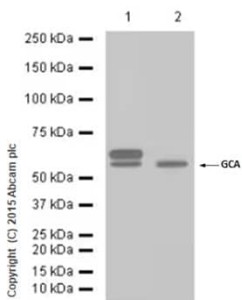
Predicted band size: 73 kDa

Observed band size: 65 kDa

Exposure time: 1 second

This data was developed using the same antibody clone in a different buffer formulation containing PBS, BSA, glycerol, and sodium azide ([ab156876](#)).

Blocking and diluting buffer and concentration: 5% NFDM/TBST.



Western blot - Anti-Glutaminase antibody [EP7212]
- BSA and Azide free (ab214802)

All lanes : Anti-Glutaminase antibody [EP7212] ([ab156876](#)) at 1/1000 dilution

Lane 1 : Human kidney tissue lysate

Lane 2 : HeLa (Human cervix adenocarcinoma epithelial cell) whole cell lysate

Lysates/proteins at 20 µg per lane.

Secondary

All lanes : Goat Anti-Rabbit IgG H&L (HRP) ([ab97051](#)) at 1/20000 dilution

Developed using the ECL technique.

Predicted band size: 73 kDa

Observed band size: 65 kDa

Exposure time: 1 second

This data was developed using the same antibody clone in a different buffer formulation containing PBS, BSA, glycerol, and sodium azide ([ab156876](#)).

Blocking and diluting buffer and concentration: 5% NFDm/TBST.

Why choose a recombinant antibody?



Research with confidence
Consistent and reproducible results



Long-term and scalable supply
Recombinant technology



Success from the first experiment
Confirmed specificity



Ethical standards compliant
Animal-free production

Anti-Glutaminase antibody [EP7212] - BSA and Azide free (ab214802)

Please note: All products are "FOR RESEARCH USE ONLY. NOT FOR USE IN DIAGNOSTIC PROCEDURES"

Our Abpromise to you: Quality guaranteed and expert technical support

- Replacement or refund for products not performing as stated on the datasheet
- Valid for 12 months from date of delivery
- Response to your inquiry within 24 hours
- We provide support in Chinese, English, French, German, Japanese and Spanish
- Extensive multi-media technical resources to help you
- We investigate all quality concerns to ensure our products perform to the highest standards

If the product does not perform as described on this datasheet, we will offer a refund or replacement. For full details of the Abpromise, please visit <https://www.abcam.com/abpromise> or contact our technical team.

Terms and conditions

- Guarantee only valid for products bought direct from Abcam or one of our authorized distributors