

Product datasheet

Anti-Glycophorin C/GPC antibody [EPR4115] ab108619

Recombinant RabMAb

[3 References](#) [2 Images](#)

Overview

Product name	Anti-Glycophorin C/GPC antibody [EPR4115]
Description	Rabbit monoclonal [EPR4115] to Glycophorin C/GPC
Host species	Rabbit
Tested applications	Suitable for: WB Unsuitable for: IHC-P
Species reactivity	Reacts with: Human
Immunogen	Synthetic peptide. This information is proprietary to Abcam and/or its suppliers.
Positive control	TF1 and K562 cell lysates.
General notes	<p>This product is a recombinant monoclonal antibody, which offers several advantages including:</p> <ul style="list-style-type: none">- High batch-to-batch consistency and reproducibility- Improved sensitivity and specificity- Long-term security of supply- Animal-free production <p>For more information see here.</p> <p>Our RabMAb[®] technology is a patented hybridoma-based technology for making rabbit monoclonal antibodies. For details on our patents, please refer to RabMAb[®] patents.</p> <p>Mouse, Rat: We have preliminary internal testing data to indicate this antibody may not react with these species. Please contact us for more information.</p>

Properties

Form	Liquid
Storage instructions	Shipped at 4°C. Store at -20°C. Stable for 12 months at -20°C.
Storage buffer	pH: 7.20 Preservative: 0.05% Sodium azide Constituents: 0.1% BSA, 40% Glycerol (glycerin, glycerine), 9.85% Tris glycine, 50% Tissue culture supernatant
Purity	Tissue culture supernatant
Clonality	Monoclonal

Clone number EPR4115
Isotype IgG

Applications

The Abpromise guarantee Our **Abpromise guarantee** covers the use of ab108619 in the following tested applications. The application notes include recommended starting dilutions; optimal dilutions/concentrations should be determined by the end user.

Application	Abreviews	Notes
WB		1/1000 - 1/10000. Predicted molecular weight: 14 kDa.

Application notes Is unsuitable for IHC-P.

Target

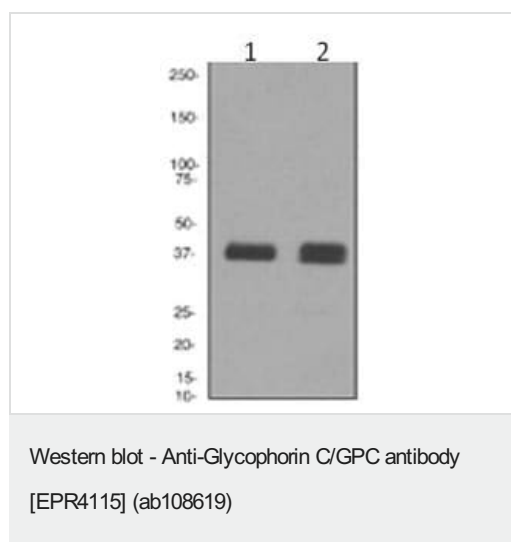
Function This protein is a minor sialoglycoprotein in human erythrocyte membranes. The blood group Gerbich antigens and receptors for Plasmodium falciparum merozoites are most likely located within the extracellular domain. Glycophorin-C plays an important role in regulating the stability of red cells.

Tissue specificity Glycophorin-C is expressed in erythrocytes. Glycophorin-D is ubiquitous.

Sequence similarities Belongs to the glycophorin-C family.

Cellular localization Cell membrane. Linked to the membrane via band 4.1.

Images



All lanes : Anti-Glycophorin C/GPC antibody [EPR4115] (ab108619) at 1/1000 dilution

Lane 1 : TF1 cell lysates

Lane 2 : K562 cell lysates

Lysates/proteins at 10 µg per lane.

Predicted band size: 14 kDa

Why choose a recombinant antibody?



Research with confidence
Consistent and reproducible results



Long-term and scalable supply
Recombinant technology



Success from the first experiment
Confirmed specificity



Ethical standards compliant
Animal-free production

Anti-Glycophorin C/GPC antibody [EPR4115]
(ab108619)

Please note: All products are "FOR RESEARCH USE ONLY. NOT FOR USE IN DIAGNOSTIC PROCEDURES"

Our Abpromise to you: Quality guaranteed and expert technical support

- Replacement or refund for products not performing as stated on the datasheet
- Valid for 12 months from date of delivery
- Response to your inquiry within 24 hours
- We provide support in Chinese, English, French, German, Japanese and Spanish
- Extensive multi-media technical resources to help you
- We investigate all quality concerns to ensure our products perform to the highest standards

If the product does not perform as described on this datasheet, we will offer a refund or replacement. For full details of the Abpromise, please visit <https://www.abcam.com/abpromise> or contact our technical team.

Terms and conditions

- Guarantee only valid for products bought direct from Abcam or one of our authorized distributors