

Anti-Glycophorin C/GPC antibody [EPR4116] ab108925

Recombinant RabMAb

6 Images

Overview

Product name	Anti-Glycophorin C/GPC antibody [EPR4116]
Description	Rabbit monoclonal [EPR4116] to Glycophorin C/GPC
Host species	Rabbit
Tested applications	Suitable for: WB, IP, IHC-P, Flow Cyt (Intra)
Species reactivity	Reacts with: Human
Immunogen	Synthetic peptide. This information is proprietary to Abcam and/or its suppliers.
Positive control	Flow Cyt: K562 cell lysate; IP: TF-1 lysate.
General notes	<p>This product is a recombinant monoclonal antibody, which offers several advantages including:</p> <ul style="list-style-type: none"> - High batch-to-batch consistency and reproducibility - Improved sensitivity and specificity - Long-term security of supply - Animal-free production <p>For more information see here.</p> <p>Our RabMAb® technology is a patented hybridoma-based technology for making rabbit monoclonal antibodies. For details on our patents, please refer to RabMAb® patents.</p> <p>Mouse, Rat: We have preliminary internal testing data to indicate this antibody may not react with these species. Please contact us for more information.</p>

Properties

Form	Liquid
Storage instructions	Shipped at 4°C. Store at -20°C.
Storage buffer	<p>pH: 7.20</p> <p>Preservative: 0.05% Sodium azide</p> <p>Constituents: 0.1% BSA, 40% Glycerol (glycerin, glycerine), 9.85% Tris glycine, 50% Tissue culture supernatant</p>
Purity	Protein A purified
Clonality	Monoclonal
Clone number	EPR4116

Applications

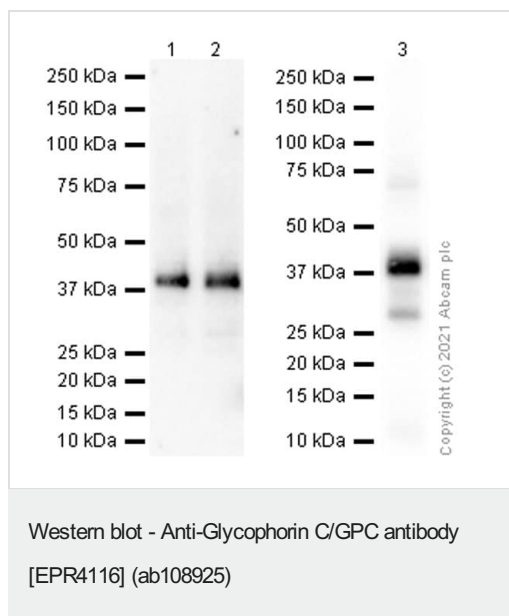
The Abpromise guarantee Our **Abpromise guarantee** covers the use of ab108925 in the following tested applications. The application notes include recommended starting dilutions; optimal dilutions/concentrations should be determined by the end user.

Application	Abreviews	Notes
WB		1/1000 - 1/10000. Predicted molecular weight: 14 kDa.
IP		1/10 - 1/100.
IHC-P		1/100 - 1/250. Perform heat mediated antigen retrieval before commencing with IHC staining protocol.
Flow Cyt (Intra)		1/10000. ab172730 - Rabbit monoclonal IgG, is suitable for use as an isotype control with this antibody.

Target

Function	This protein is a minor sialoglycoprotein in human erythrocyte membranes. The blood group Gerbich antigens and receptors for Plasmodium falciparum merozoites are most likely located within the extracellular domain. Glycophorin-C plays an important role in regulating the stability of red cells.
Tissue specificity	Glycophorin-C is expressed in erythrocytes. Glycophorin-D is ubiquitous.
Sequence similarities	Belongs to the glycophorin-C family.
Cellular localization	Cell membrane. Linked to the membrane via band 4.1.

Images



All lanes : Anti-Glycophorin C/GPC antibody [EPR4116] (ab108925) at 1/1000 dilution (Purified)

Lane 1 : TF-1 (Human Erythroleukemia erythroblast) whole cell lysate

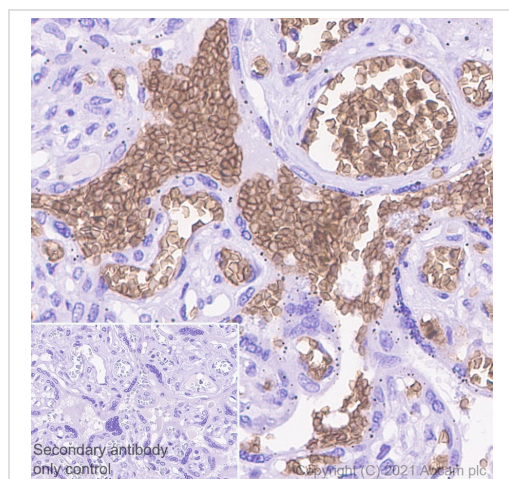
Lane 2 : K-562 (Human chronic myelogenous leukemia lymphoblast) whole cell lysate

Lane 3 : Human red blood lysate

Secondary

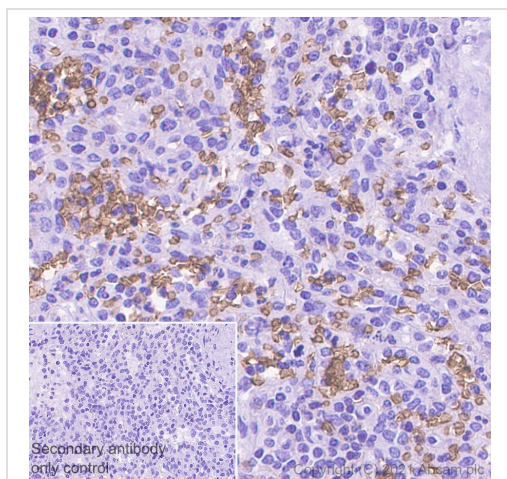
All lanes : Goat Anti-Rabbit IgG (HRP) with minimal cross-reactivity with human IgG at 1/2000 dilution

Predicted band size: 14 kDa



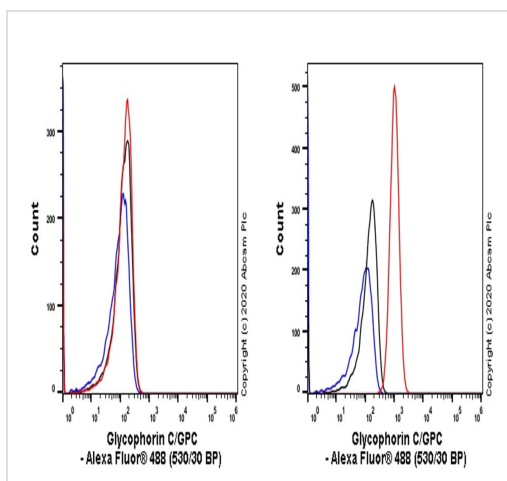
Immunohistochemistry (Formalin/PFA-fixed paraffin-embedded sections) analysis of human placenta tissue sections labeling Glycophorin C/GPC with Purified ab108925 at 1:1500 dilution (0.06 µg/ml). Heat mediated antigen retrieval was performed using Heat mediated antigen retrieval using Bond™ Epitope Retrieval Solution 2 (pH 9.0) . Tissue was counterstained with Hematoxylin. Rabbit specific IHC polymer detection kit HRP/DAB ([ab209101](#)) secondary antibody was used at 1:0 dilution. PBS instead of the primary antibody was used as the negative control.

Immunohistochemistry (Formalin/PFA-fixed paraffin-embedded sections) - Anti-Glycophorin C/GPC antibody [EPR4116] (ab108925)



Immunohistochemistry (Formalin/PFA-fixed paraffin-embedded sections) - Anti-Glycophorin C/GPC antibody [EPR4116] (ab108925)

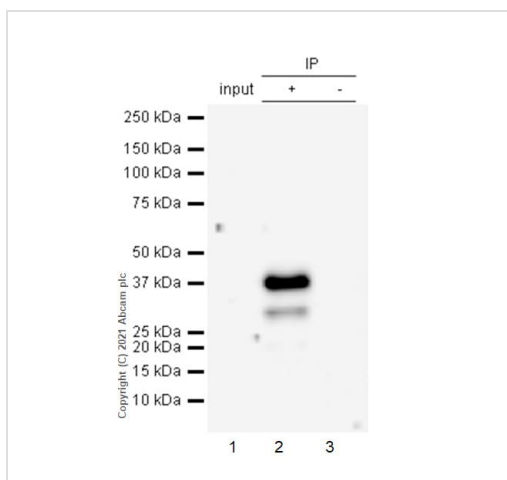
Immunohistochemistry (Formalin/PFA-fixed paraffin-embedded sections) analysis of human spleen tissue sections labeling Glycophorin C/GPC with Purified ab108925 at 1:1500 dilution (0.06 µg/ml). Heat mediated antigen retrieval was performed using Heat mediated antigen retrieval using Bond™ Epitope Retrieval Solution 2 (pH 9.0) . Tissue was counterstained with Hematoxylin. Rabbit specific IHC polymer detection kit HRP/DAB (**ab209101**) secondary antibody was used at 1:0 dilution. PBS instead of the primary antibody was used as the negative control.



Flow Cytometry (Intracellular) - Anti-Glycophorin C/GPC antibody [EPR4116] (ab108925)

Flow Cytometry analysis of A549 (Human lung carcinoma epithelial cell, Left) / K-562 (Human chronic myelogenous leukemia lymphoblast, Right) cells labeling Glycophorin C/GPC with purified ab108925 at 1/10000 dilution (0.1 µg/mL) (Red). Cells were fixed with 4% Paraformaldehyde and permeabilised with 90% Methanol. A Goat anti rabbit IgG (Alexa Fluor® 488, **ab150077**) secondary antibody was used at 1/2000. Isotype control - Rabbit monoclonal IgG (Black). Unlabeled control - Cell without incubation with primary antibody and secondary antibody (Blue).

Negative control: A549.



Immunoprecipitation - Anti-Glycophorin C/GPC antibody [EPR4116] (ab108925)

Glycophorin C/GPC was immunoprecipitated from 0.35 mg TF-1 (Human Erythroleukemia erythroblast) whole cell lysate 10 µg with 108925 at 1/50 dilution (2µg). VeriBlot for IP Detection Reagent (HRP)(**ab131366**) was used at 1/5000 dilution.

Lane 1: TF-1 (Human Erythroleukemia erythroblast) whole cell lysate 10 µg

Lane 2: ab108925 IP in TF-1 whole cell lysate

Lane 3: Rabbit monoclonal IgG (**ab172730**) instead of ab108925 in TF-1 whole cell lysate

Blocking and dilution buffer and concentration: 5% NFDm/TBST.

Lower band could be N-Deglycosylated GPC. (PMID: 16461900)

Why choose a recombinant antibody?



Research with confidence
Consistent and reproducible results



Long-term and scalable supply
Recombinant technology



Success from the first experiment
Confirmed specificity



Ethical standards compliant
Animal-free production

Anti-Glycophorin C/GPC antibody [EPR4116]
(ab108925)

Please note: All products are "FOR RESEARCH USE ONLY. NOT FOR USE IN DIAGNOSTIC PROCEDURES"

Our Abpromise to you: Quality guaranteed and expert technical support

- Replacement or refund for products not performing as stated on the datasheet
- Valid for 12 months from date of delivery
- Response to your inquiry within 24 hours
- We provide support in Chinese, English, French, German, Japanese and Spanish
- Extensive multi-media technical resources to help you
- We investigate all quality concerns to ensure our products perform to the highest standards

If the product does not perform as described on this datasheet, we will offer a refund or replacement. For full details of the Abpromise, please visit <https://www.abcam.com/abpromise> or contact our technical team.

Terms and conditions

- Guarantee only valid for products bought direct from Abcam or one of our authorized distributors