

Product datasheet

Anti-Glypican 1/ GPC1 antibody [EPR19285] - Low endotoxin, Azide free ab222499

Recombinant RabMAb

4 Images

Overview

Product name	Anti-Glypican 1/ GPC1 antibody [EPR19285] - Low endotoxin, Azide free
Description	Rabbit monoclonal [EPR19285] to Glypican 1/ GPC1 - Low endotoxin, Azide free
Host species	Rabbit
Tested applications	Suitable for: Flow Cyt (Intra), ICC/IF, WB Unsuitable for: IHC-P
Species reactivity	Reacts with: Human Does not react with: Mouse, Rat
Immunogen	Synthetic peptide. This information is proprietary to Abcam and/or its suppliers.
Positive control	WB: MDA-MB-231, MOLT-4, HepG2, K562, SH-SY5Y and MCF7 whole cell lysates; Human fetal kidney, colon and fetal spleen lysates. ICC/IF: MCF7 and MDA-MB-231 cells. Flow Cyt (intra): MDA-MB-231 cells.
General notes	<p>ab222499 is the carrier-free version of ab199343.</p> <p>Our carrier-free antibodies are typically supplied in a PBS-only formulation, purified and free of BSA, sodium azide and glycerol. The carrier-free buffer and high concentration allow for increased conjugation efficiency.</p> <p>This conjugation-ready format is designed for use with fluorochromes, metal isotopes, oligonucleotides, and enzymes, which makes them ideal for antibody labelling, functional and cell-based assays, flow-based assays (e.g. mass cytometry) and Multiplex Imaging applications.</p> <p>Use our conjugation kits for antibody conjugates that are ready-to-use in as little as 20 minutes with <1 minute hands-on-time and 100% antibody recovery: available for fluorescent dyes, HRP, biotin and gold.</p> <p>This product is compatible with the Maxpar[®] Antibody Labeling Kit from Fluidigm, without the need for antibody preparation. Maxpar[®] is a trademark of Fluidigm Canada Inc.</p> <p>Our RabMAb[®] technology is a patented hybridoma-based technology for making rabbit monoclonal antibodies. For details on our patents, please refer to RabMAb[®] patents.</p> <p>Our Low endotoxin, azide-free formats have low endotoxin level (≤ 1 EU/ml, determined by the LAL assay) and are free from azide, to achieve consistent experimental results in functional assays.</p>

Properties

Form	Liquid
Storage instructions	Shipped at 4°C. Store at +4°C. Do Not Freeze.
Storage buffer	pH: 7.2 Constituent: PBS
Carrier free	Yes
Purity	Protein A purified
Clonality	Monoclonal
Clone number	EPR19285
Isotype	IgG

Applications

The Abpromise guarantee Our **Abpromise guarantee** covers the use of ab222499 in the following tested applications. The application notes include recommended starting dilutions; optimal dilutions/concentrations should be determined by the end user.

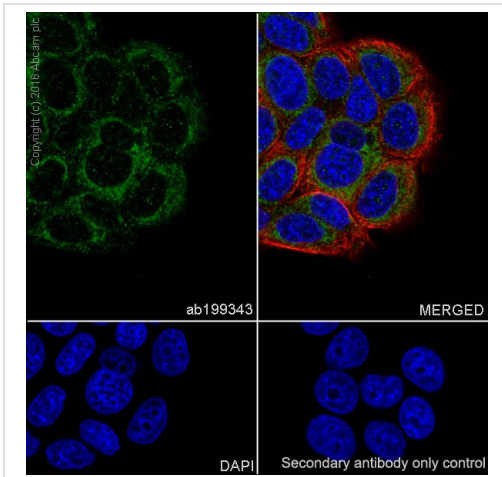
Application	Abreviews	Notes
Flow Cyt (Intra)		Use at an assay dependent concentration. ab199376 - Rabbit monoclonal IgG, is suitable for use as an isotype control with this antibody.
ICC/IF		Use at an assay dependent concentration.
WB		Use at an assay dependent concentration. Detects a band of approximately 55 kDa (predicted molecular weight: 61 kDa).

Application notes Is unsuitable for IHC-P.

Target

Function	Cell surface proteoglycan that bears heparan sulfate.
Sequence similarities	Belongs to the glypican family.
Post-translational modifications	This cell-associated glypican is further processed to give rise to a medium-released species.
Cellular localization	Cell membrane and Secreted > extracellular space.

Images



Immunocytochemistry/ Immunofluorescence - Anti-Glypican 1/ GPC1 antibody [EPR19285] - Low endotoxin, Azide free (ab222499)

Immunofluorescent analysis of 4% paraformaldehyde-fixed, 0.1% Triton X-100 permeabilized MCF7 (Human breast adenocarcinoma cell line) cells labeling Glypican 1/ GPC1 with **ab199343** at 1/500 dilution, followed by Goat Anti-Rabbit IgG (Alexa Fluor[®] 488) (**ab150077**) secondary antibody at 1/1000 dilution (green).

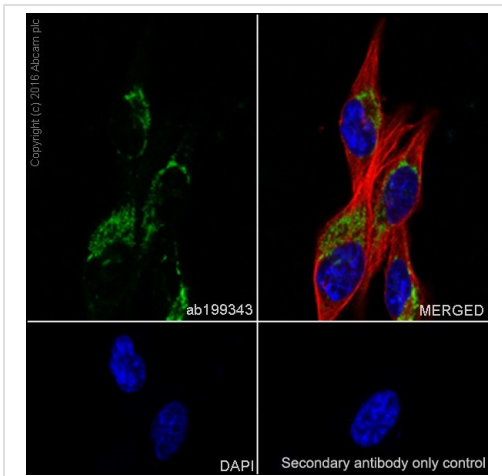
Confocal image showing cytoplasmic staining on MCF7 cell line.

The nuclear counterstain is DAPI (blue).

Tubulin is detected with **ab195889** (Anti-alpha Tubulin antibody [DM1A] - Microtubule Marker (Alexa Fluor[®] 594)) at 1/200 dilution (red).

Secondary antibody only control: Used PBS instead of primary antibody, secondary antibody is **ab150077** at 1/1000 dilution.

This data was developed using the same antibody clone in a different buffer formulation containing PBS, BSA, glycerol, and sodium azide (**ab199343**).



Immunocytochemistry/ Immunofluorescence - Anti-Glypican 1/ GPC1 antibody [EPR19285] - Low endotoxin, Azide free (ab222499)

Immunofluorescent analysis of 4% paraformaldehyde-fixed, 0.1% Triton X-100 permeabilized MDA-MB-231 (Human breast adenocarcinoma cell line) cells labeling Glypican 1/ GPC1 with **ab199343** at 1/500 dilution, followed by Goat Anti-Rabbit IgG (Alexa Fluor[®] 488) (**ab150077**) secondary antibody at 1/1000 dilution (green).

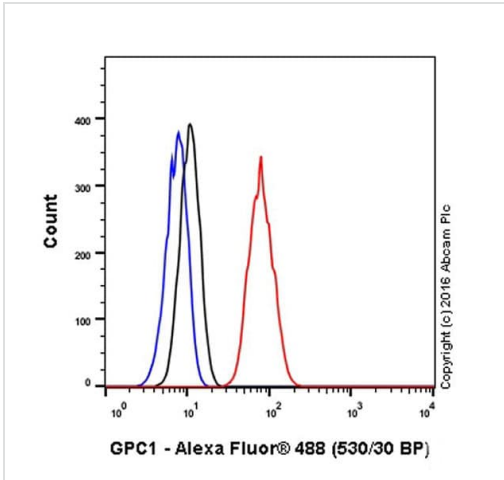
Confocal image showing membrane associated and cytoplasmic staining on MDA-MB-231 cell line.

The nuclear counterstain is DAPI (blue).

Tubulin is detected with **ab195889** (Anti-alpha Tubulin antibody [DM1A] - Microtubule Marker (Alexa Fluor[®] 594)) at 1/200 dilution (red).

Secondary antibody only control: Used PBS instead of primary antibody, secondary antibody is **ab150077** at 1/1000 dilution.

This data was developed using the same antibody clone in a different buffer formulation containing PBS, BSA, glycerol, and sodium azide (**ab199343**).







Flow Cytometry (Intracellular) - Anti-Glypican 1/
GPC1 antibody [EPR19285] - Low endotoxin, Azide
free (ab222499)

Intracellular flow cytometric analysis of 4% paraformaldehyde-fixed MDA-MB-231 (Human breast adenocarcinoma cell line) cells labeling Glypican 1/ GPC1 with **ab199343** at 1/60 dilution (red) compared with a Rabbit IgG, monoclonal[EPR25A]-Isotype control (**ab172730**) (black) and an unlabelled control (cells without incubation with primary antibody and secondary antibody) (blue). Goat Anti Rabbit IgG (Alexa Fluor® 488) at 1/2000 dilution was used as the secondary antibody.

This data was developed using the same antibody clone in a different buffer formulation containing PBS, BSA, glycerol, and sodium azide (**ab199343**).

Why choose a
recombinant antibody?

 Research with confidence Consistent and reproducible results	 Long-term and scalable supply Recombinant technology
 Success from the first experiment Confirmed specificity	 Ethical standards compliant Animal-free production

Anti-Glypican 1/ GPC1 antibody [EPR19285] - Low endotoxin, Azide free (ab222499)

Please note: All products are "FOR RESEARCH USE ONLY. NOT FOR USE IN DIAGNOSTIC PROCEDURES"

Our Abpromise to you: Quality guaranteed and expert technical support

- Replacement or refund for products not performing as stated on the datasheet
- Valid for 12 months from date of delivery
- Response to your inquiry within 24 hours
- We provide support in Chinese, English, French, German, Japanese and Spanish
- Extensive multi-media technical resources to help you

- We investigate all quality concerns to ensure our products perform to the highest standards

If the product does not perform as described on this datasheet, we will offer a refund or replacement. For full details of the Abpromise, please visit <https://www.abcam.com/abpromise> or contact our technical team.

Terms and conditions

- Guarantee only valid for products bought direct from Abcam or one of our authorized distributors