

## Product datasheet

# Anti-Glypican 1/ GPC1 antibody [EPR22580-72] - BSA and Azide free ab255687

Recombinant RabMAb

5 Images

### Overview

<b>Product name</b>	Anti-Glypican 1/ GPC1 antibody [EPR22580-72] - BSA and Azide free
<b>Description</b>	Rabbit monoclonal [EPR22580-72] to Glypican 1/ GPC1 - BSA and Azide free
<b>Host species</b>	Rabbit
<b>Tested applications</b>	<b>Suitable for:</b> IP, WB, IHC-P <b>Unsuitable for:</b> Flow Cyt or ICC/IF
<b>Species reactivity</b>	<b>Reacts with:</b> Human <b>Does not react with:</b> Mouse
<b>Immunogen</b>	Recombinant fragment. This information is proprietary to Abcam and/or its suppliers.
<b>Positive control</b>	WB: DU 145 (cultured under serum-free conditions), PC-3, MCF7 and MDA-MB-231 whole cell lysates. IHC-P: Human pancreatic carcinoma, lung carcinoma and esophagus carcinoma tissue. IP: DU145 whole cell lysate.
<b>General notes</b>	<p>ab255687 is the carrier-free version of <a href="#">ab255600</a>.</p> <p>Our <b>carrier-free</b> antibodies are typically supplied in a PBS-only formulation, purified and free of BSA, sodium azide and glycerol. The carrier-free buffer and high concentration allow for increased conjugation efficiency.</p> <p>This conjugation-ready format is designed for use with fluorochromes, metal isotopes, oligonucleotides, and enzymes, which makes them ideal for antibody labelling, functional and cell-based assays, flow-based assays (e.g. mass cytometry) and Multiplex Imaging applications.</p> <p>Use our <b>conjugation kits</b> for antibody conjugates that are ready-to-use in as little as 20 minutes with &lt;1 minute hands-on-time and 100% antibody recovery: available for fluorescent dyes, HRP, biotin and gold.</p> <p>This product is compatible with the Maxpar<sup>®</sup> Antibody Labeling Kit from Fluidigm, without the need for antibody preparation. Maxpar<sup>®</sup> is a trademark of Fluidigm Canada Inc.</p> <p>This product is a recombinant monoclonal antibody, which offers several advantages including:</p> <ul style="list-style-type: none"><li>- High batch-to-batch consistency and reproducibility</li><li>- Improved sensitivity and specificity</li><li>- Long-term security of supply</li><li>- Animal-free production</li></ul> <p>For more information <a href="#">see here</a>.</p>

Our RabMAb<sup>®</sup> technology is a patented hybridoma-based technology for making rabbit monoclonal antibodies. For details on our patents, please refer to [RabMAb<sup>®</sup> patents](#).

## Properties

---

<b>Form</b>	Liquid
<b>Storage instructions</b>	Shipped at 4°C. Store at +4°C. Do Not Freeze.
<b>Storage buffer</b>	pH: 7.2 Constituent: PBS
<b>Carrier free</b>	Yes
<b>Purity</b>	Protein A purified
<b>Clonality</b>	Monoclonal
<b>Clone number</b>	EPR22580-72
<b>Isotype</b>	IgG

## Applications

---

**The Abpromise guarantee** Our [Abpromise guarantee](#) covers the use of ab255687 in the following tested applications. The application notes include recommended starting dilutions; optimal dilutions/concentrations should be determined by the end user.

Application	Abreviews	Notes
IP		Use at an assay dependent concentration.
WB		Use at an assay dependent concentration. Detects a band of approximately 60 kDa (predicted molecular weight: 62 kDa).
IHC-P		Use at an assay dependent concentration. Perform heat mediated antigen retrieval with Tris/EDTA buffer pH 9.0 before commencing with IHC staining protocol.

**Application notes** Is unsuitable for Flow Cyt or ICC/IF.

## Target

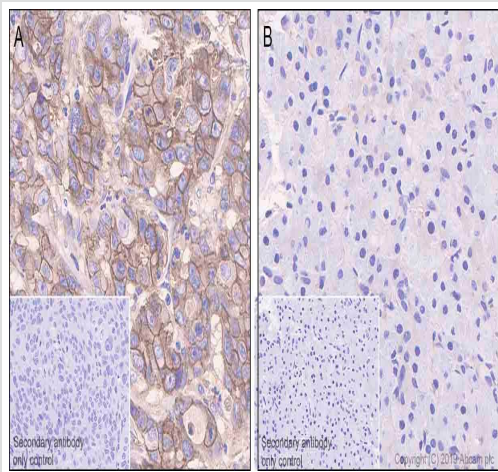
---

<b>Function</b>	Cell surface proteoglycan that bears heparan sulfate.
<b>Sequence similarities</b>	Belongs to the glypican family.
<b>Post-translational modifications</b>	This cell-associated glypican is further processed to give rise to a medium-released species.
<b>Cellular localization</b>	Cell membrane and Secreted > extracellular space.

---

## Images

---



Immunohistochemistry (Formalin/PFA-fixed paraffin-embedded sections) - Anti-Glypican 1/ GPC1 antibody [EPR22580-72] - BSA and Azide free (ab255687)

Immunohistochemical analysis of paraffin-embedded human pancreatic carcinoma tissue (A) and the paired adjacent pancreas tissue (B) labeling Glypican 1/ GPC1 with **ab255600** at 1/500 dilution, followed by Rabbit specific IHC polymer detection kit HRP/DAB (**ab209101**). Cytoplasmic and membranous staining on human pancreatic carcinoma (panel A) and no staining on the paired adjacent pancreas (panel B, PMID: 28440066) is observed. Counter stained with hematoxylin.

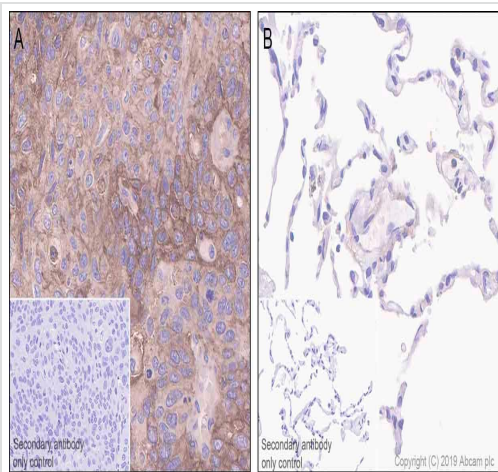
Secondary antibody only control: Used PBS instead of primary antibody, secondary antibody is Rabbit specific IHC polymer detection kit HRP/DAB (**ab209101**).

Heat mediated antigen retrieval with Tris-EDTA buffer (pH 9.0, epitope retrieval solution 2) for 20 mins.

The section was incubated with **ab255600** for 30 mins at RT.

The immunostaining was performed on a Leica Biosystems BOND® RX instrument.

This data was developed using the same antibody clone in a different buffer formulation containing PBS, BSA, glycerol, and sodium azide (**ab255600**).



Immunohistochemistry (Formalin/PFA-fixed paraffin-embedded sections) - Anti-Glypican 1/ GPC1 antibody [EPR22580-72] - BSA and Azide free (ab255687)

Immunohistochemical analysis of paraffin-embedded human lung carcinoma tissue (A) and the paired adjacent lung tissue (B) labeling Glypican 1/ GPC1 with **ab255600** at 1/500 dilution, followed by Rabbit specific IHC polymer detection kit HRP/DAB (**ab209101**). Positive staining on human lung carcinoma (panel A) and the paired adjacent lung (panel B) was barely stained (PMID: 29785020) is observed. Counter stained with hematoxylin.

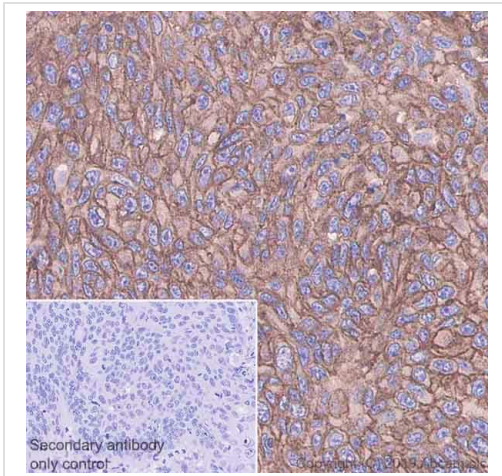
Secondary antibody only control: Used PBS instead of primary antibody, secondary antibody is Rabbit specific IHC polymer detection kit HRP/DAB (**ab209101**).

Heat mediated antigen retrieval with Tris-EDTA buffer (pH 9.0, epitope retrieval solution 2) for 20 mins.

The section was incubated with **ab255600** for 30 mins at RT.

The immunostaining was performed on a Leica Biosystems BOND® RX instrument.

This data was developed using the same antibody clone in a different buffer formulation containing PBS, BSA, glycerol, and sodium azide (**ab255600**).



Immunohistochemistry (Formalin/PFA-fixed paraffin-embedded sections) - Anti-Glypican 1/ GPC1 antibody [EPR22580-72] - BSA and Azide free (ab255687)

Immunohistochemical analysis of paraffin-embedded esophagus lung carcinoma tissue labeling Glypican 1/ GPC1 with **ab255600** at 1/500 dilution, followed by Rabbit specific IHC polymer detection kit HRP/DAB (**ab209101**). Positive staining on esophagus carcinoma (PMID: 28445969) is observed. Counter stained with hematoxylin.

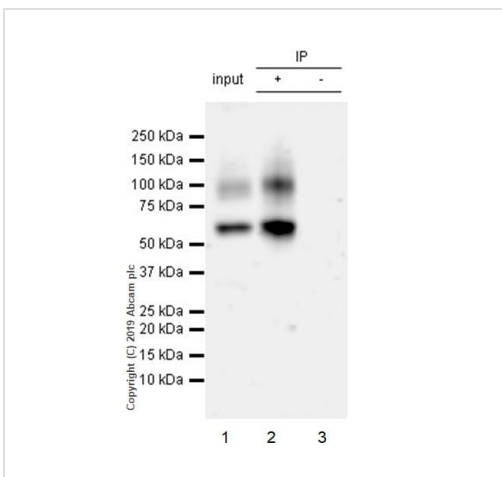
Secondary antibody only control: Used PBS instead of primary antibody, secondary antibody is Rabbit specific IHC polymer detection kit HRP/DAB (**ab209101**).

Heat mediated antigen retrieval with Tris-EDTA buffer (pH 9.0, epitope retrieval solution 2) for 20 mins.

The section was incubated with **ab255600** for 30 mins at RT.

The immunostaining was performed on a Leica Biosystems BOND® RX instrument.

This data was developed using the same antibody clone in a different buffer formulation containing PBS, BSA, glycerol, and sodium azide (**ab255600**).



Immunoprecipitation - Anti-Glypican 1/ GPC1 antibody [EPR22580-72] - BSA and Azide free (ab255687)

Glypican 1/ GPC1 was immunoprecipitated from 0.35 mg DU 145 (human prostate carcinoma cell line) whole cell lysate 10µg with **ab255600** at 1/30 dilution (2µg in 0.35mg lysates). Western blot was performed on the immunoprecipitate using **ab255600** 1/1000 dilution (0.65 µg/ml). VeriBlot for IP Detection Reagent (HRP) (**ab131366**) was used as the secondary antibody at 1/5000 dilution.

**Lane 1:** DU 145 (human prostate carcinoma cell line) whole cell lysate 10µg

**Lane 2:** **ab255600** IP in DU 145 whole cell lysate

**Lane 3:** Rabbit monoclonal IgG (**ab172730**) instead of **ab255600** in DU 145 whole cell lysate.

Blocking and dilution buffer and concentration: 5% NFDm/TBST.

Exposure time: 75 seconds.

This data was developed using the same antibody clone in a different buffer formulation containing PBS, BSA, glycerol, and sodium azide (**ab255600**).

### Why choose a recombinant antibody?



**Research with confidence**  
Consistent and reproducible results



**Long-term and scalable supply**  
Recombinant technology



**Success from the first experiment**  
Confirmed specificity



**Ethical standards compliant**  
Animal-free production

Anti-Glypican 1/ GPC1 antibody [EPR22580-72] -  
BSA and Azide free (ab255687)

**Please note:** All products are "FOR RESEARCH USE ONLY. NOT FOR USE IN DIAGNOSTIC PROCEDURES"

### Our Abpromise to you: Quality guaranteed and expert technical support

---

- Replacement or refund for products not performing as stated on the datasheet
- Valid for 12 months from date of delivery
- Response to your inquiry within 24 hours
- We provide support in Chinese, English, French, German, Japanese and Spanish
- Extensive multi-media technical resources to help you
- We investigate all quality concerns to ensure our products perform to the highest standards

If the product does not perform as described on this datasheet, we will offer a refund or replacement. For full details of the Abpromise, please visit <https://www.abcam.com/abpromise> or contact our technical team.

### Terms and conditions

---

- Guarantee only valid for products bought direct from Abcam or one of our authorized distributors