

### Anti-GM-CSF antibody ab9741

[13 References](#) [3 Images](#)

#### Overview

<b>Product name</b>	Anti-GM-CSF antibody
<b>Description</b>	Rabbit polyclonal to GM-CSF
<b>Host species</b>	Rabbit
<b>Tested applications</b>	<b>Suitable for:</b> ELISA, WB
<b>Species reactivity</b>	<b>Reacts with:</b> Mouse
<b>Immunogen</b>	Recombinant full length protein corresponding to Mouse GM-CSF. Highly pure (>98%) recombinant mGM-CSF (mouse Granulocyte Macrophage Colony Stimulating Factor) Database link: <a href="#">P01587</a>
<b>General notes</b>	<p>Although some customers have been successful in IHC we no longer batch test in this application.</p> <p>The Life Science industry has been in the grips of a reproducibility crisis for a number of years. Abcam is leading the way in addressing this with our range of recombinant monoclonal antibodies and knockout edited cell lines for gold-standard validation. Please check that this product meets your needs before purchasing.</p> <p>If you have any questions, special requirements or concerns, please send us an inquiry and/or contact our Support team ahead of purchase. Recommended alternatives for this product can be found below, along with publications, customer reviews and Q&amp;As</p>

#### Properties

<b>Form</b>	Lyophilized:Reconstitute with 200µl of sterile water.
<b>Storage instructions</b>	Shipped at 4°C. Store at +4°C short term (1-2 weeks). Upon delivery aliquot. Store at -20°C long term.
<b>Storage buffer</b>	No preservative, sterile filtered
<b>Purity</b>	Immunogen affinity purified
<b>Clonality</b>	Polyclonal
<b>Isotype</b>	unknown
<b>Light chain type</b>	unknown

#### Applications

## The Abpromise guarantee

Our **Abpromise guarantee** covers the use of ab9741 in the following tested applications.

The application notes include recommended starting dilutions; optimal dilutions/concentrations should be determined by the end user.

Application	Abreviews	Notes
ELISA		Use at an assay dependent concentration.
WB		Use a concentration of 0.1 - 0.2 µg/ml. Used in conjunction with compatible secondary reagents the detection limit for recombinant mGM-CSF is 1.5 - 3.0 ng/lane, under either reducing or non-reducing conditions.

## Target

### Function

Cytokine that stimulates the growth and differentiation of hematopoietic precursor cells from various lineages, including granulocytes, macrophages, eosinophils and erythrocytes.

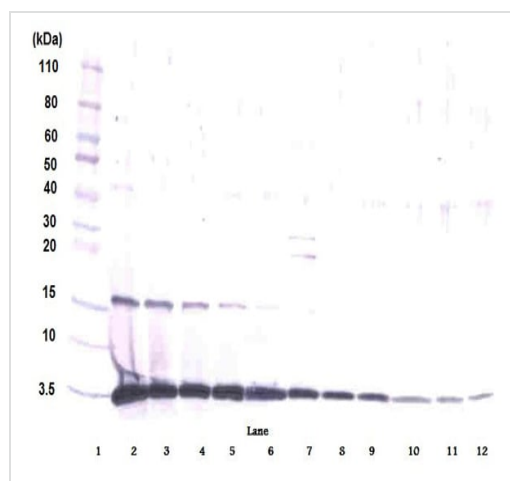
### Sequence similarities

Belongs to the GM-CSF family.

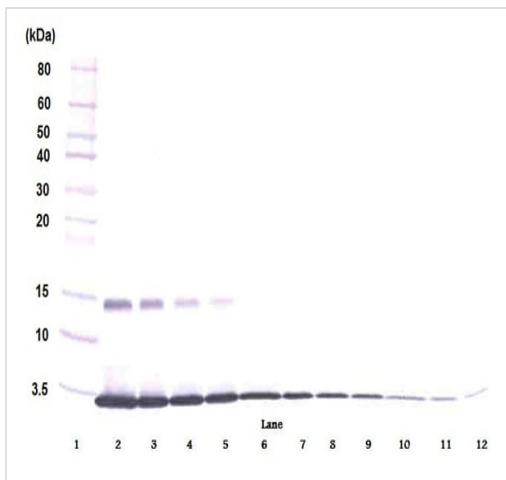
### Cellular localization

Secreted.

## Images

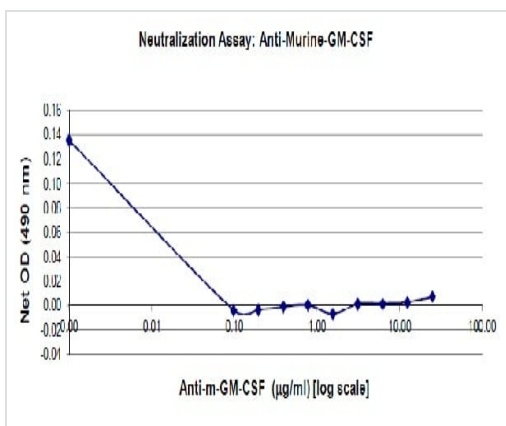


Western blot - Anti-GM-CSF antibody (ab9741)



Western blot analysis of recombinant mGM-CSF using ab9741 at 0.1 µg/ml. Bottom band - dye front.

Western blot - Anti-GM-CSF antibody (ab9741)



Less than 0.10 µg/ml ab9741 will neutralize 50% of the bioactivity of 1 ng/ml m-GM-CSF.

ELISA - Anti-GM-CSF antibody (ab9741)

**Please note:** All products are "FOR RESEARCH USE ONLY. NOT FOR USE IN DIAGNOSTIC PROCEDURES"

### Our Abpromise to you: Quality guaranteed and expert technical support

- Replacement or refund for products not performing as stated on the datasheet
- Valid for 12 months from date of delivery
- Response to your inquiry within 24 hours

- We provide support in Chinese, English, French, German, Japanese and Spanish
- Extensive multi-media technical resources to help you
- We investigate all quality concerns to ensure our products perform to the highest standards

If the product does not perform as described on this datasheet, we will offer a refund or replacement. For full details of the Abpromise, please visit <https://www.abcam.com/abpromise> or contact our technical team.

#### **Terms and conditions**

---

- Guarantee only valid for products bought direct from Abcam or one of our authorized distributors